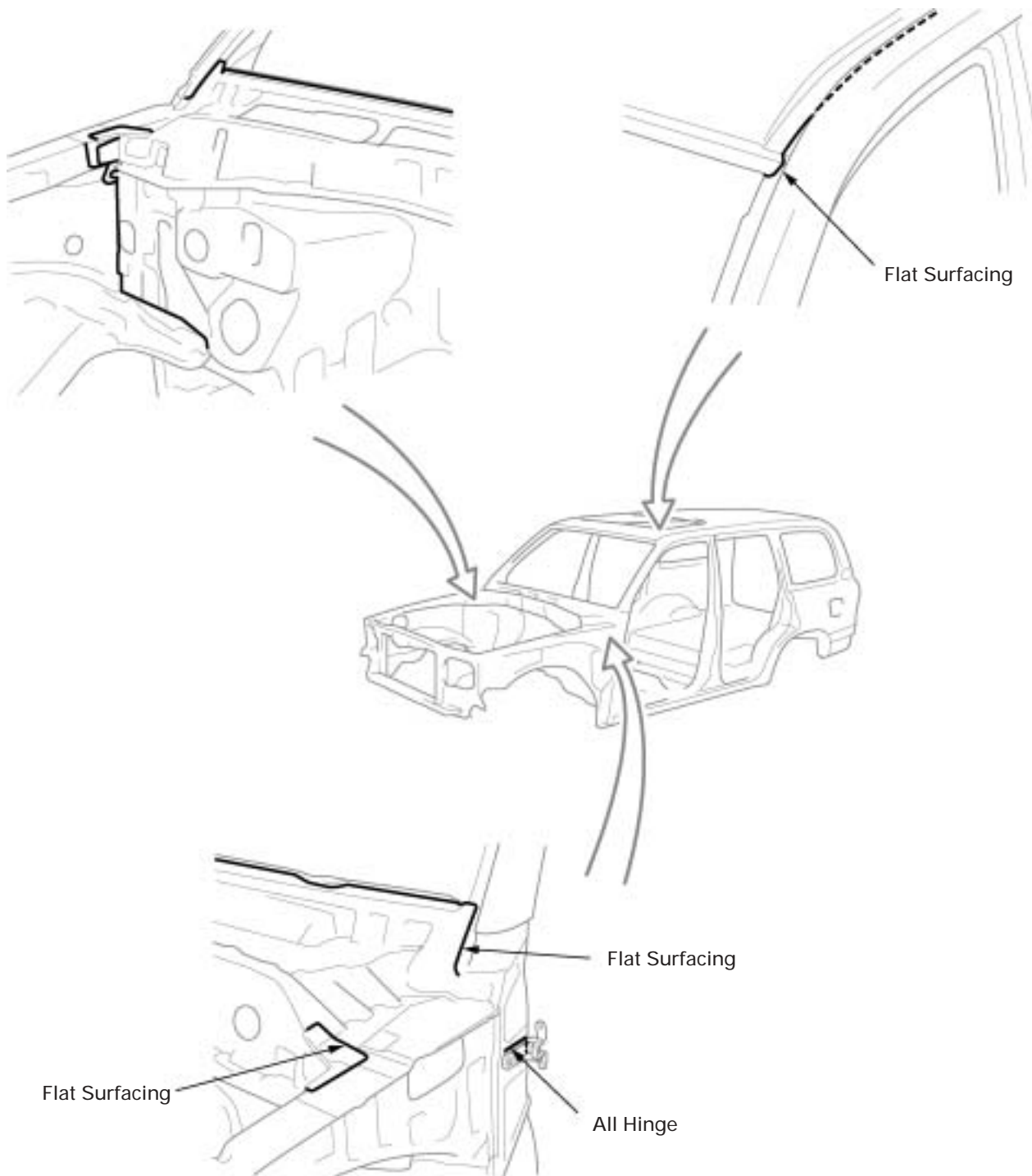
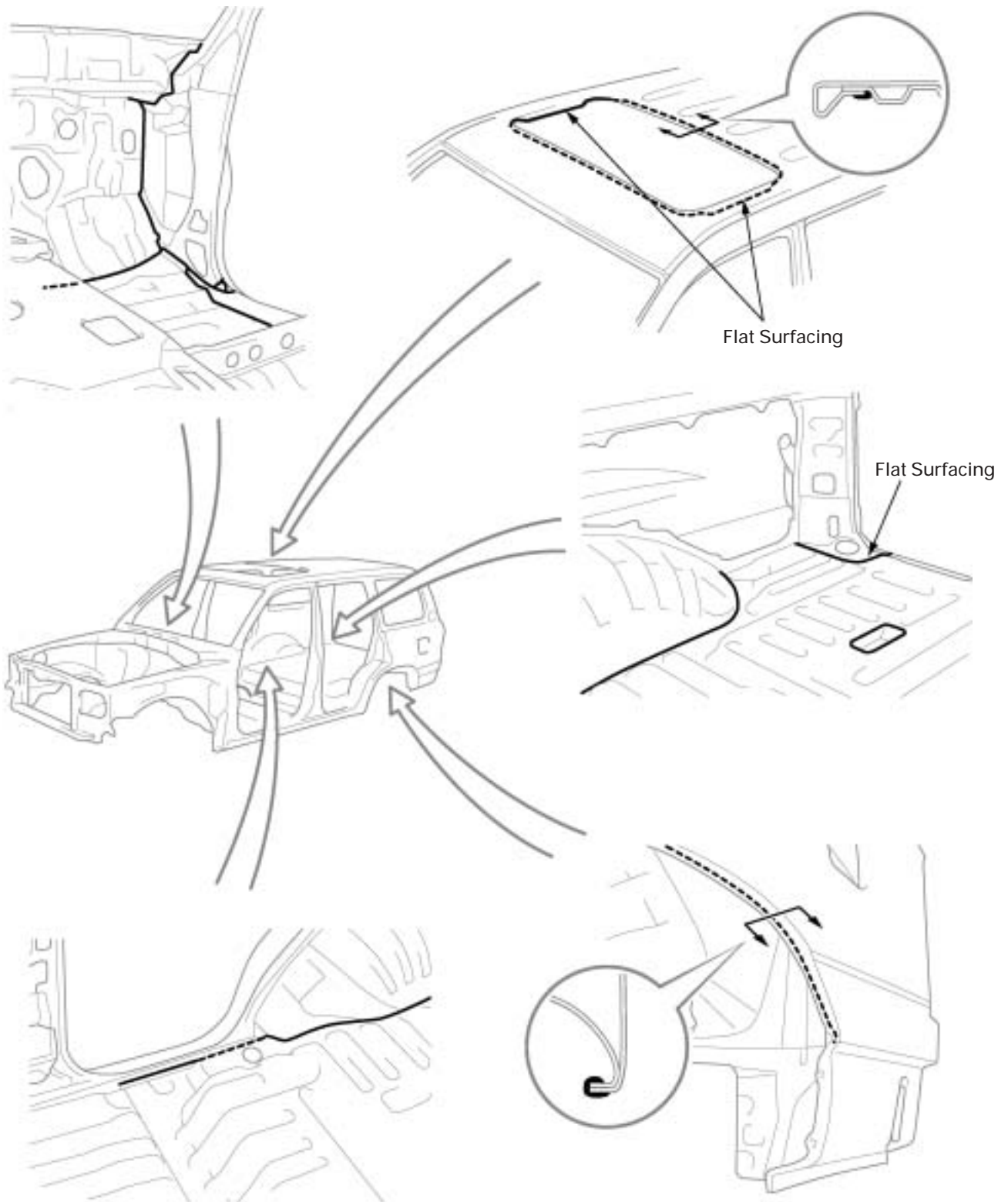


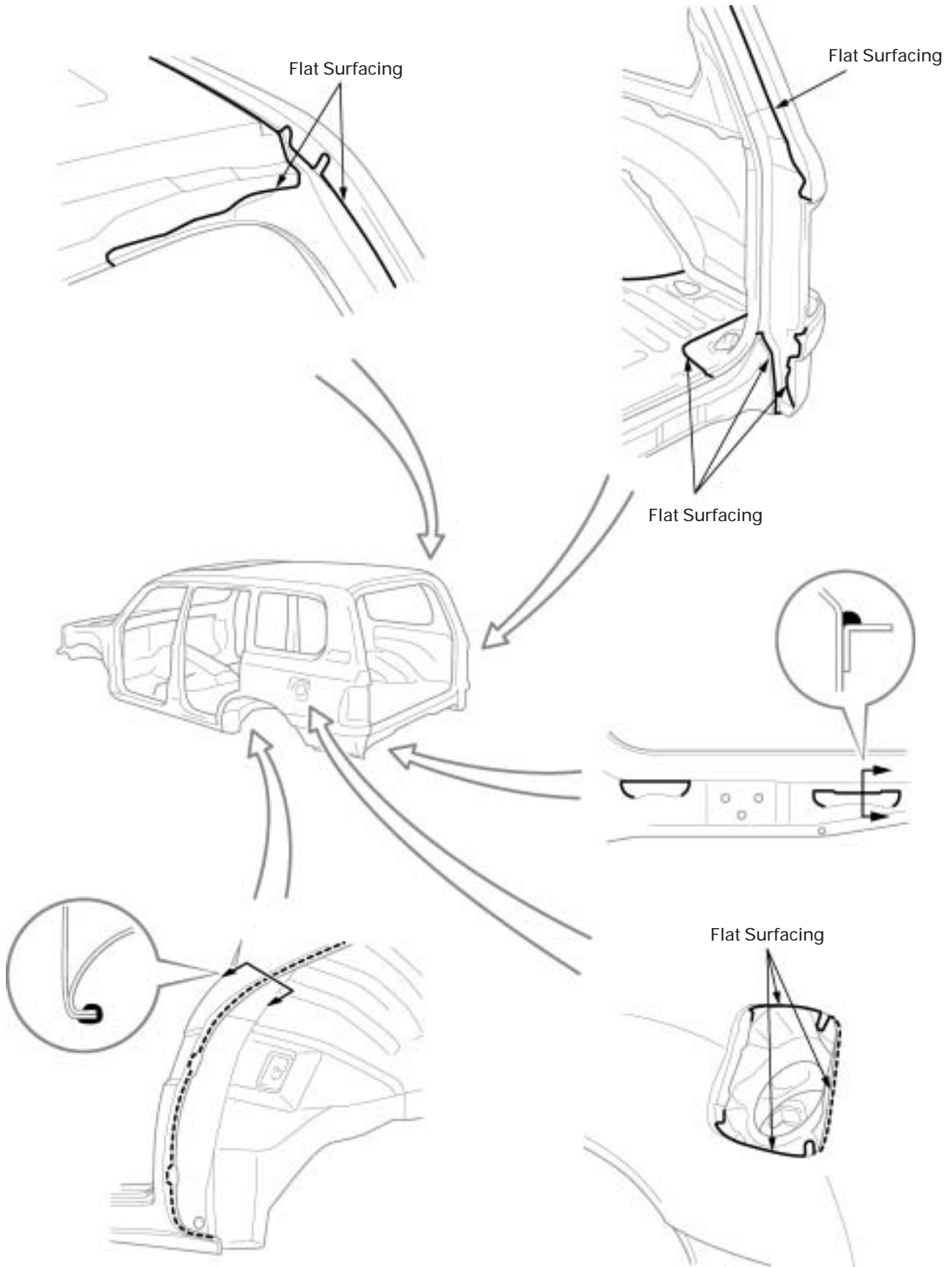
BODY PANEL SEALING AREAS

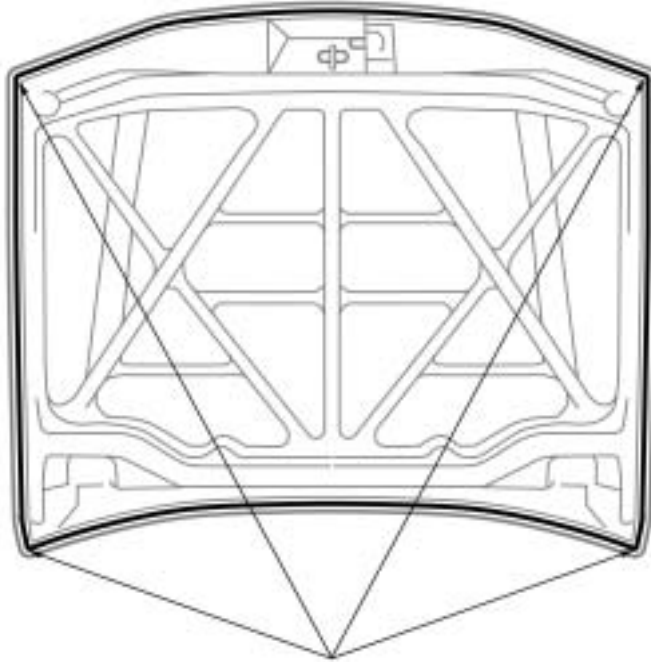
HINT:

1. Prior to applying body sealer, clean the area with a rag soaked in a grease, wax and silicone remover.
2. If weld-through primer was used, first wipe off any excess and coat with anti-corrosion primer before applying body sealer.
3. Wipe off excess body sealer with a rag soaked in a grease, wax and silicone remover.
4. If body sealer is damaged by peeling, cracks, etc., be sure to repair as necessary.





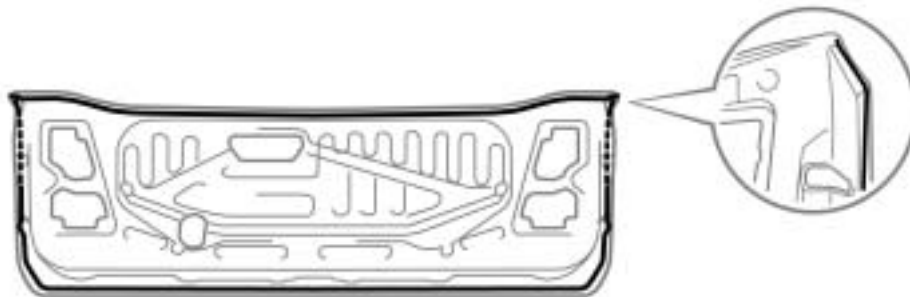




Flat Surfacing



Lift-Up Type Back Door



Lift-Up Type Back Door

Swing Type Back Door

