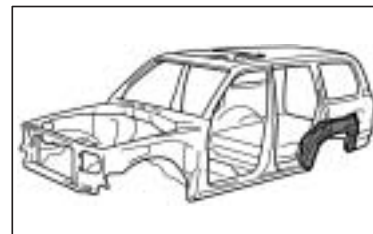
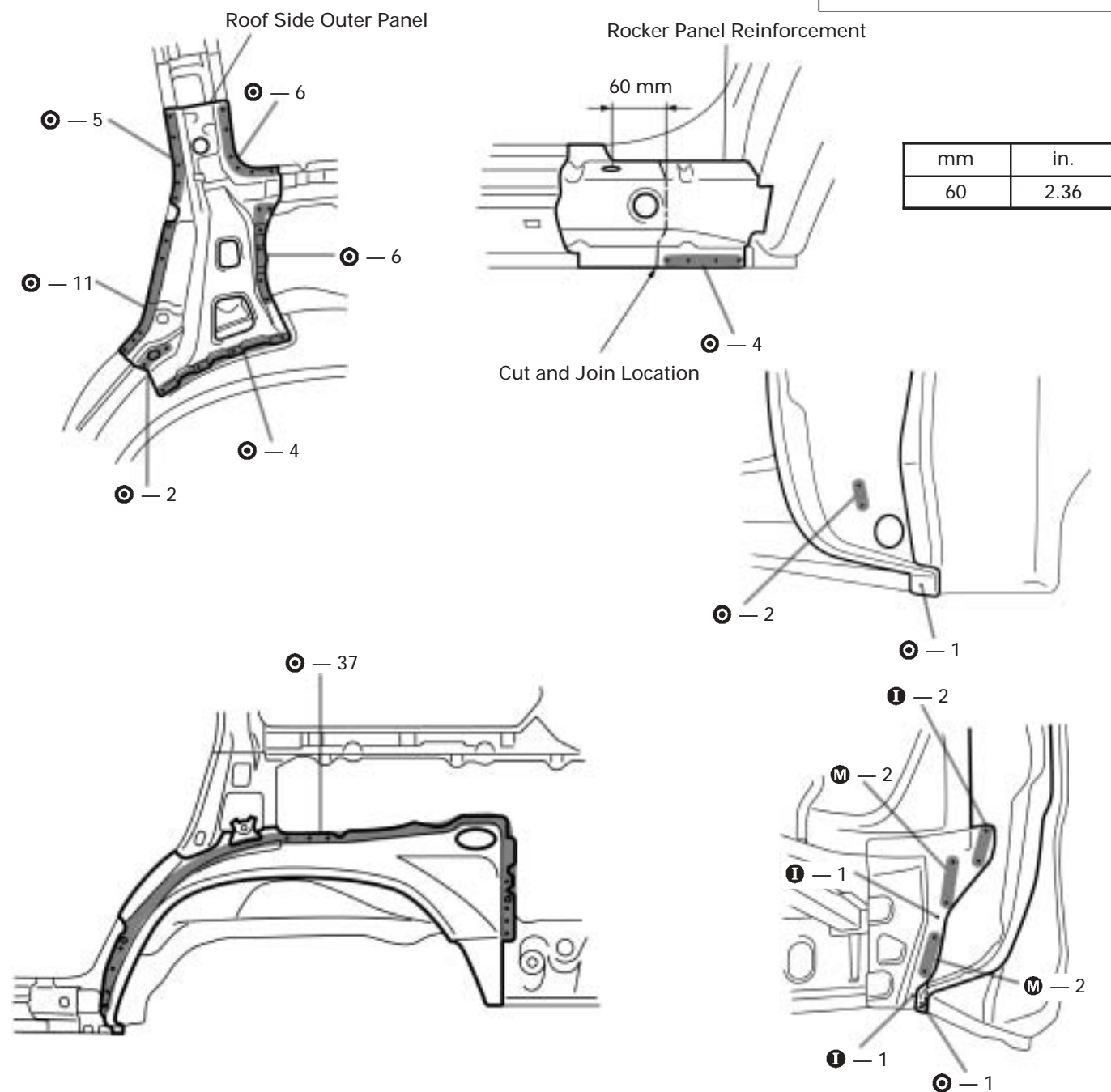


QUARTER WHEEL HOUSING OUTER PANEL (ASSY): Left Side

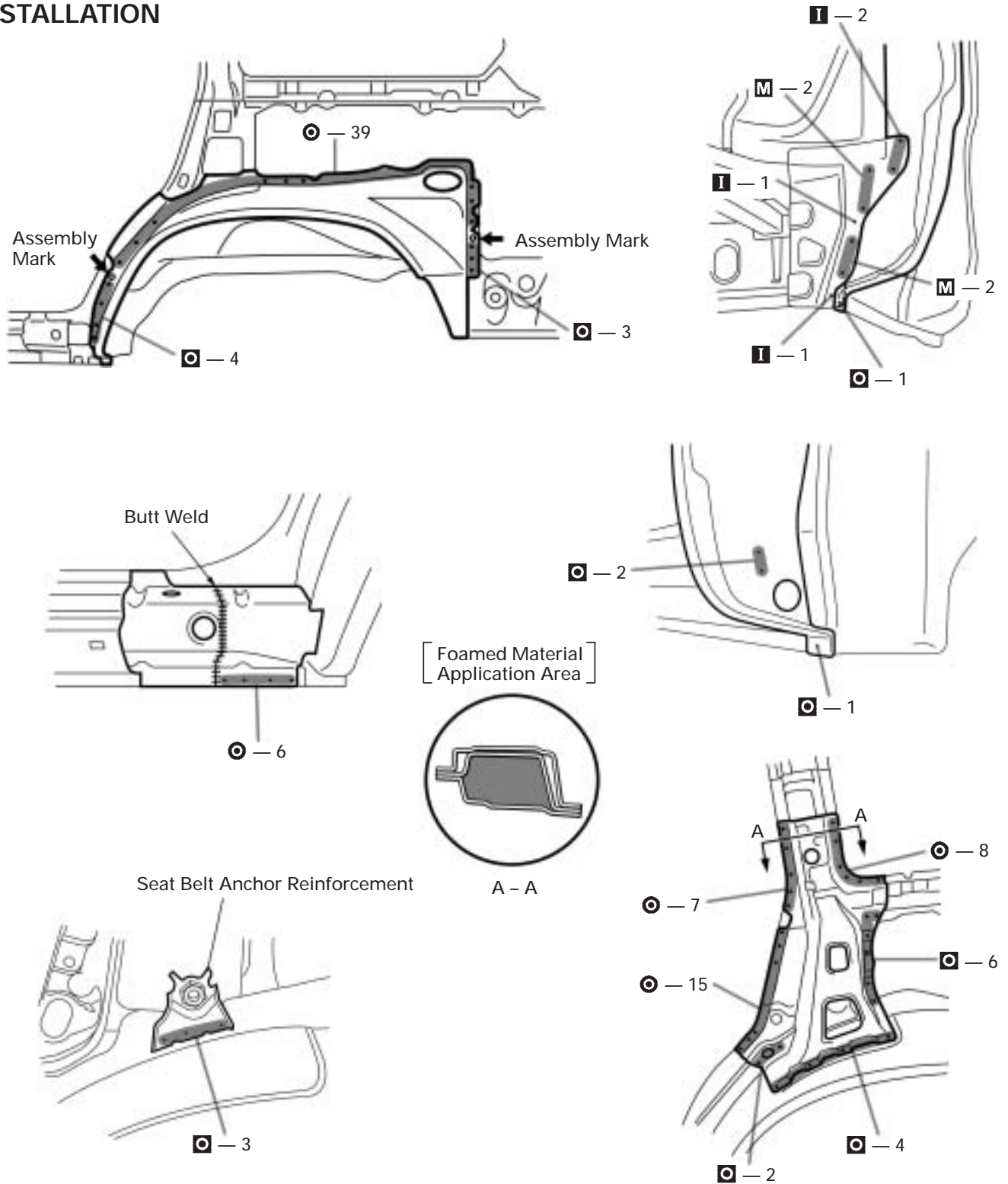


REMOVAL (With the quarter panel removed.)



1. Cut and join the rocker panel reinforcement at the location as shown above.
2. After removing the roof side outer panel, remove the quarter wheel housing outer panel.

INSTALLATION



1. Determine the position of the new parts by the assembly marks of the inner and outer panels.
2. Before welding the new parts, temporarily install the quarter panel and check the fit.
3. After installing the new parts, apply foamed materials.