

■ INTERIOR LIGHT REMINDER SYSTEM

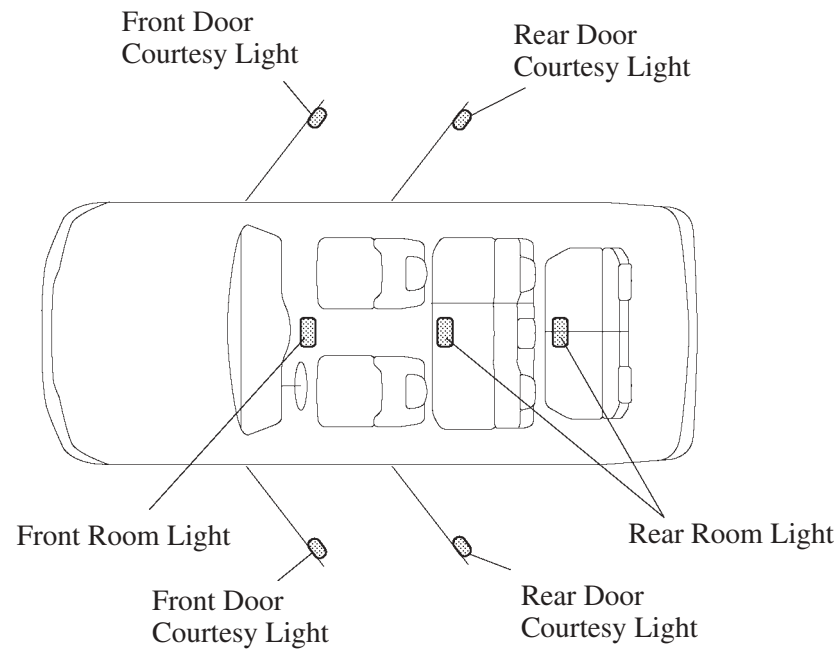
1. General

The interior light reminder system provides two functions: interior light cutoff function and the door courtesy switch linked light cutoff function.

The interior light cutoff function turns OFF the light main relay when the ignition switch is turned OFF and no changes have occurred in all the door courtesy light switches within 30 minutes.

When the ignition switch is turned OFF and if any of the doors remain open longer than 5 minutes, the door courtesy switch-linked light cutoff function automatically turns OFF the lights that are linked to that door.

2. Layout of Interior Light



155BE16

3. Normal Operation

The interior lights that illuminate along with the opening of the doors are listed in the table below.

⊙: ON (With Fade-Out), ○: ON, X: OFF

Interior Light Door to be opened	Front Door Courtesy Light		Front Room Light	Rear Door Courtesy Light		Rear Room Light
	Driver	Passenger		Left	Right	
Driver Side Front Door	⊙	⊙	⊙	X	X	X
Passenger Side Front Door	⊙	⊙	⊙	X	X	X
Left Side Rear Door	X	X	X	○	○	○
Right Side Rear Door	X	X	X	○	○	○
Back Door	X	X	X	○	○	○

4. Interior Light Cut Off Function

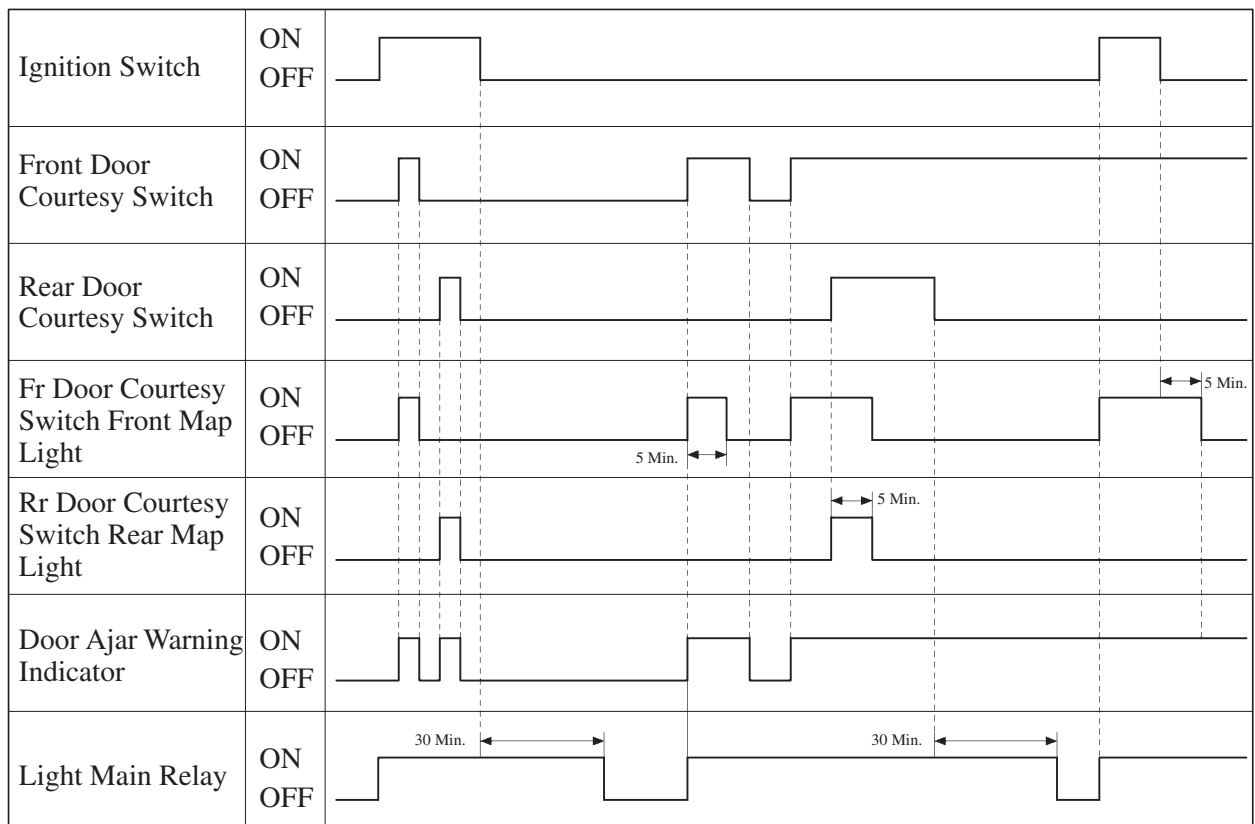
When the ignition switch is turned OFF, the instrument panel ECU monitors the condition of the door courtesy light switches and starts counting time. When 30 minutes have elapsed after no changes have occurred in any of the door courtesy light switches, the instrument panel ECU turns OFF the light main relay to cut off the current to the interior lights. As a result, the interior lights turn OFF.

As a result, the interior light turns OFF.

However, the activation of this function is canceled and the time count is reset if the condition of the vehicle meets any of the items given below.

- The ignition switch is turned to ACC or ON position.
- Any of the doors is opened or closed.

These functions help prevent the light front being left ON.



155BE11

5. Door Courtesy Switch Linked Light Cut Off Function

When the ignition switch is turned OFF and any of the doors are opened, the instrument panel ECU monitors the condition of the door courtesy light switches and starts counting time. When 5 minutes have elapsed after no changes have occurred in any of the door courtesy light switches, the instrument panel ECU turns OFF the interior lights that are linked to the opening of a door.

However, the activation of this function is canceled and the time count is reset if the condition of the vehicle meets any of the items given below.

- The ignition switch is turned to ACC or ON position.
- All doors are closed.

In addition, while the timer is counting time, if any of the previously closed doors are opened, the timer resets itself and starts counting time.

These functions help prevent the interior lights from being left ON if a door is unintentionally left open.