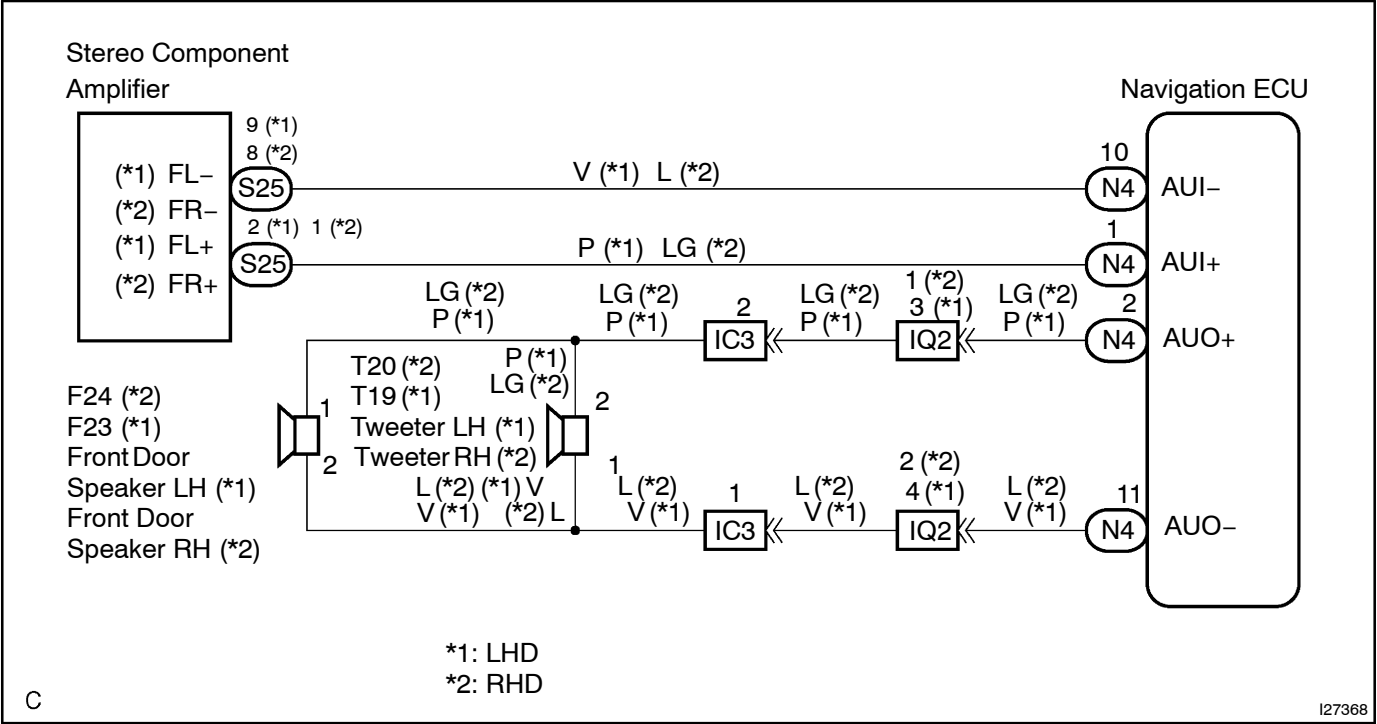


Speaker Circuit

CIRCUIT DESCRIPTION

This circuit is used when the voice guidance in the navigation system is on.

WIRING DIAGRAM



INSPECTION PROCEDURE

1	Inspect apparatus.
---	---------------------------

(a) Choose the apparatus to be inspected.

Apparatus	Go to step
Front LH speaker	A
Front LH tweeter	B
Front speaker No.1 assy and front speaker No.2 assy	C

B

Go to step 4

C

Go to step 5

A

2	Inspect front LH speaker.
---	----------------------------------

(a) Disconnect the speaker connector.

(b) Resistance check.

(1) Measure the resistance between the terminals of the speaker.

NOTICE:

The speaker should not be removed for checking.

Standard value:

Approx. 2 Ω

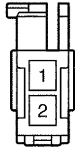
NG

Replace front LH speaker.

OK

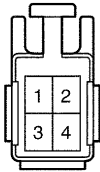
3 Check for open or short circuit in harness and connector between front LH speaker and front LH tweeter.

Front Door Speaker Side:



F23 : LHD
F24 : RHD

Front Tweeter Side:



T19 : LHD
T20 : RHD

P

I27393

- (a) Disconnect the front No.2 speaker connector.
- (b) Measure the resistance according to the value(s) in the table below.

Standard:

Tester connection	Condition	Specified condition
F23(24)-1 - T19(20)-3	Always	Below 1 Ω
F23(24)-2 - T19(20)-1	Always	Below 1 Ω
F23(24)-1 - Body ground	Always	10 k Ω or higher
F23(24)-2 - Body ground	Always	10 k Ω or higher

NG

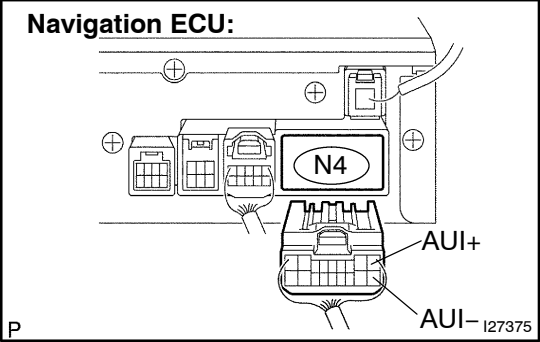
Repair or replace harness or connector.

OK

Proceed to next circuit inspection shown in problem symptoms table. (See page DI-209)

4

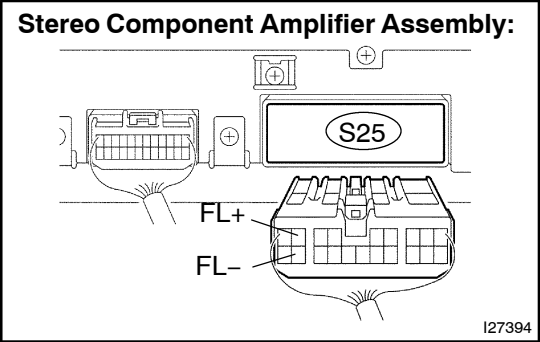
Check for open or short circuit in harness and connector between navigation ECU and stereo component amplifier assembly.



- (a) Disconnect the connector from the navigation ECU and stereo component amplifier assembly.
- (b) Measure the resistance according to the value(s) in the table below.

Standard:

Tester connection	Condition	Specified condition
AUI+ – FL+	Always	Below 1 Ω
AUI– – FL–	Always	Below 1 Ω
AUI+ – Body ground	Always	10 k Ω or higher
AUI– – Body ground	Always	10 k Ω or higher

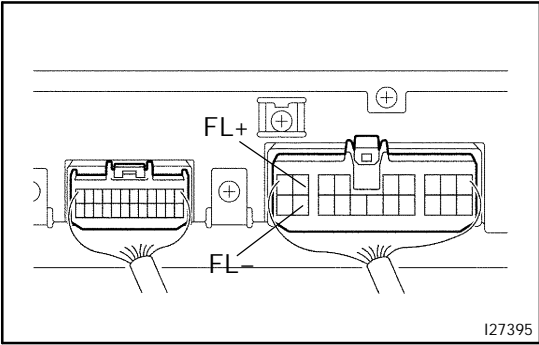


NG

Repair or replace harness or connector.

OK

5 Inspect stereo component amplifier assembly.



- (a) Connect the connector.
- (b) Using an oscilloscope, check the signal waveform between the terminals according to the conditions, as shown in the chart.

Standard:

Tester connection	Condition	Specified condition
FL+ – Body ground	While voice sound is being produced	A waveform synchronized with sound is output
FL– – Body ground	While voice sound is being produced	A waveform synchronized with sound is output

NG

Replace stereo component amplifier assembly.

OK

Proceed to next circuit inspection shown in problem symptoms table. (See [page DI-209](#))