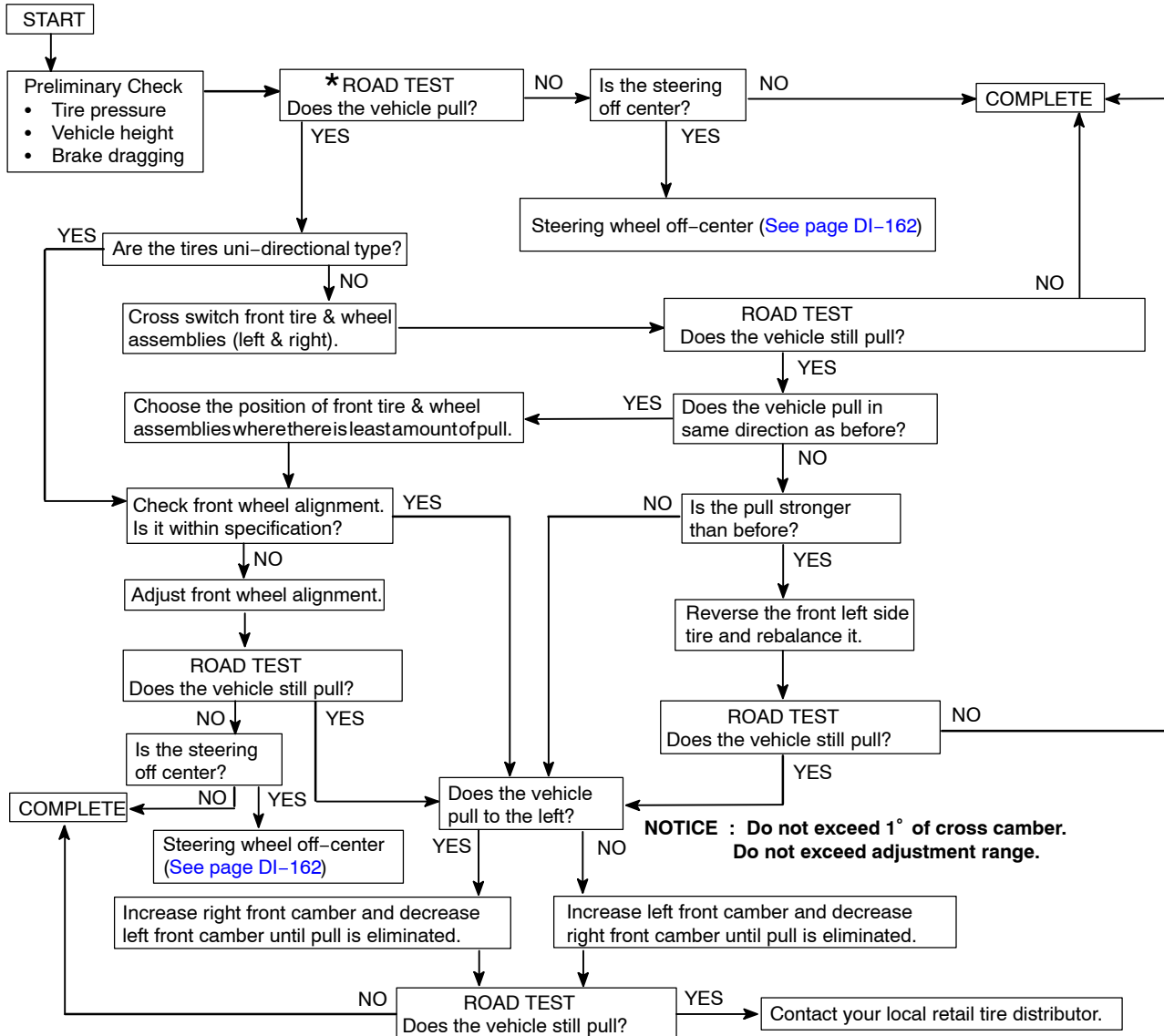


TROUBLESHOOTING VEHICLE PULLING DIAGNOSIS

SA2BJ-03



★ Select a flat road where the vehicle can be driven in a straight line for 100 meters at a constant speed of 56 km/h (35mph). Please confirm safety and set the steering wheel to its straight position. Drive the vehicle in a straight line for 100 meters at a constant speed of 35mph without holding the steering wheel.

- (1) The vehicle can keep straight but the steering wheel has some angle.
 → STEERING OFF CENTER (See page DI-162)
- (2) The vehicle cannot keep straight.
 → STEERING PULL