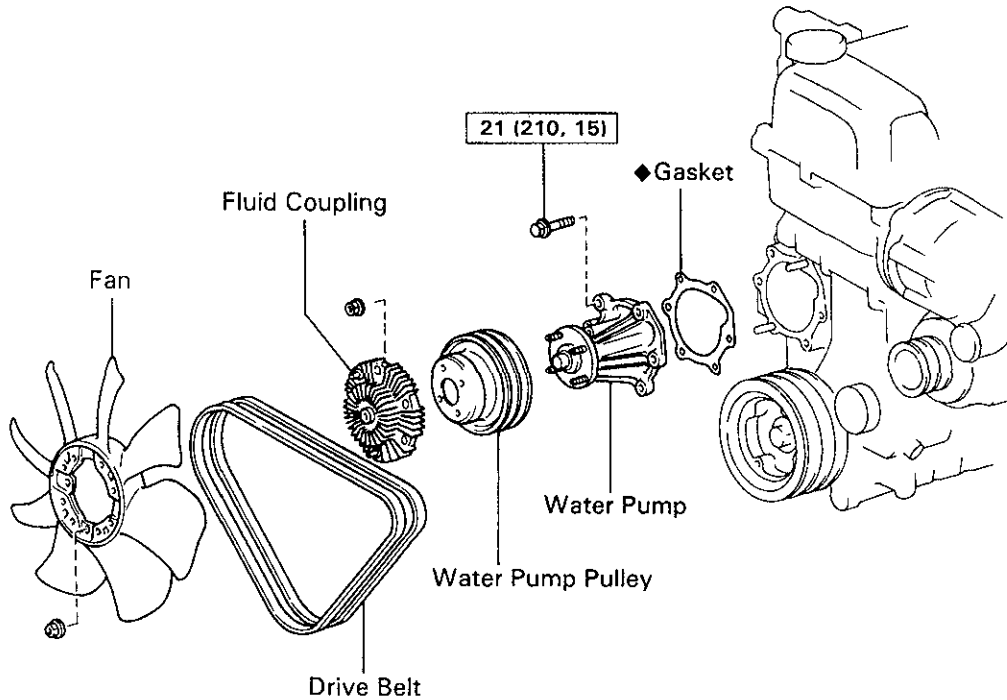


# WATER PUMP COMPONENTS FOR REMOVAL AND INSTALLATION

EG00X-06

EG

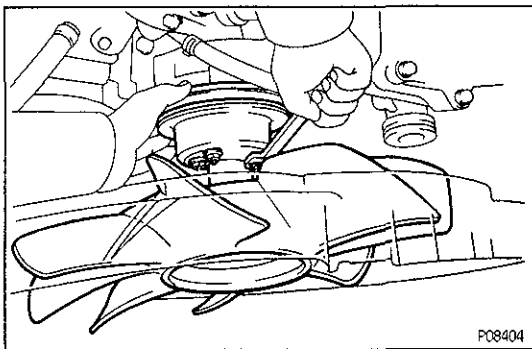


N·m (kgf·cm, ft·lbf) : Specified torque

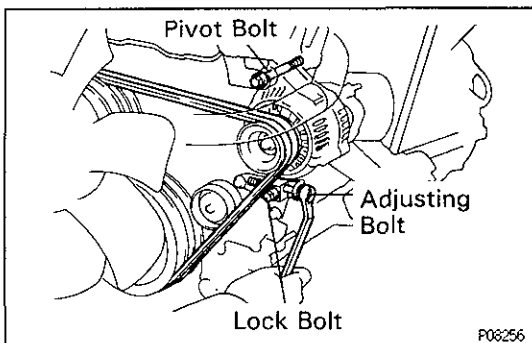
◆ Non-reusable part

P10448

EG287-01



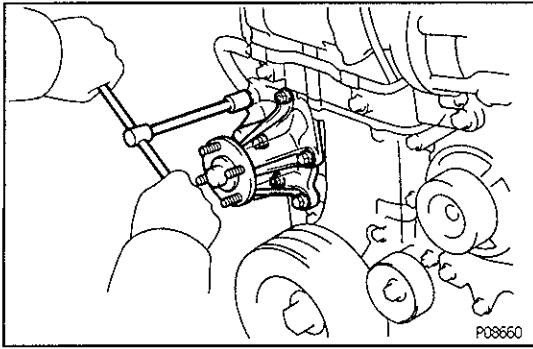
P08404



P08256

## WATER PUMP REMOVAL

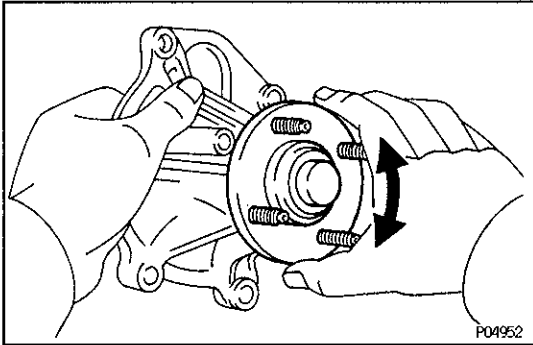
1. DRAIN ENGINE COOLANT
2. DISCONNECT NO.3 WATER BY-PASS HOSE
3. DISCONNECT RADIATOR INLET HOSE
4. REMOVE DRIVE BELTS, FAN WITH FLUID COUPLING, WATER PUMP PULLEY AND FAN SHROUD
  - (a) Stretch the belts and loosen the water pump pulley mounting nuts.
  - (b) Loosen the lock, pivot and adjusting bolts of the generator, and remove the drive belts.
  - (c) Remove the two bolts holding the fan shroud to the radiator.
  - (d) Remove the four water pump pulley mounting nuts.
  - (e) Pull out the fan with fluid coupling, water pump pulley and fan shroud.
  - (f) Remove the fan from the fluid coupling.



## 5. REMOVE WATER PUMP

Remove the four bolts, two nuts, water pump and gasket.

EG

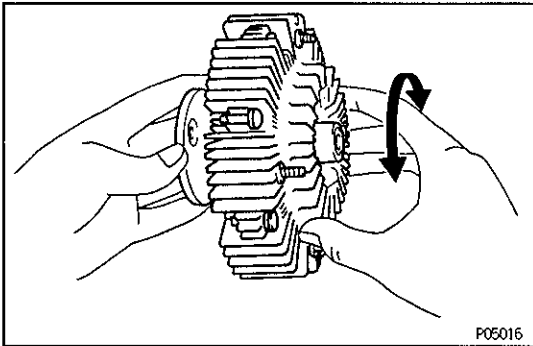


## WATER PUMP COMPONENTS INSPECTION EGONG-01

### 1. INSPECT WATER PUMP

Turn the pulley seat and check that the water pump bearing is not rough or noisy.

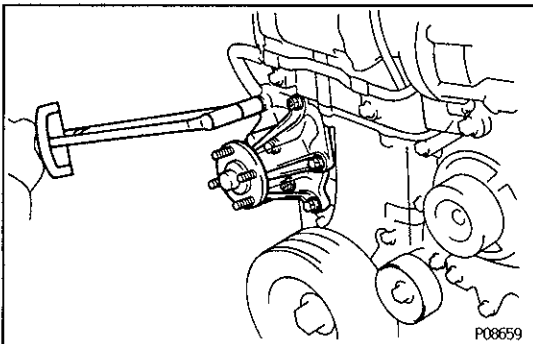
If necessary, replace the water pump.



### 2. INSPECT FLUID COUPLING

Check the fluid coupling for damage and silicon oil leakage.

If necessary, replace the fluid coupling.



## WATER PUMP INSTALLATION EG288-01

(See Components for Removal and Installation)

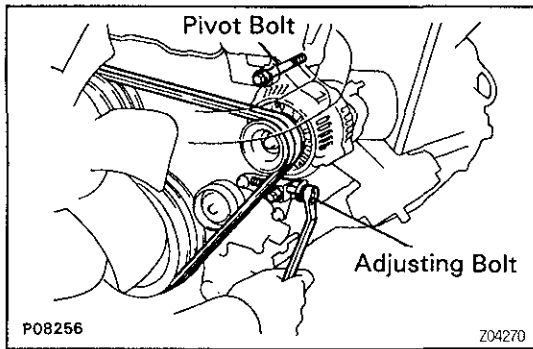
### 1. INSTALL WATER PUMP

Install a new gasket and water pump with the four bolts and two nuts.

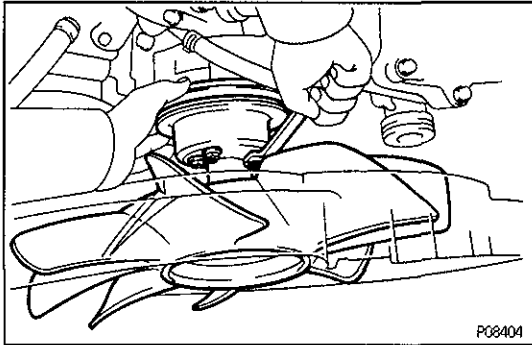
Torque: 21 N·m (210 kgf·cm, 15 ft·lbf)

### 2. INSTALL WATER PUMP PULLEY, FAN SHROUD, FAN WITH FLUID COUPLING AND DRIVE BELTS

- Install fan to the fluid coupling.
- Place the fan with fluid coupling, water pump pulley and fan shroud in position.
- Temporarily install the fan pulley mounting nuts.
- Install the fan shroud with the two bolts.



- (e) Install the drive belts with the adjusting bolt and pivot bolt.



- (f) Stretch the belts tight and tighten the four water pump pulley mounting nuts.
- (g) Adjust the drive belts.  
(See CH section)

3. CONNECT NO.3 WATER BY-PASS HOSE
4. CONNECT RADIATOR INLET HOSE
5. FILL WITH ENGINE COOLANT
6. START ENGINE AND CHECK FOR LEAKS