

## SOLAR SENSOR INSPECTION

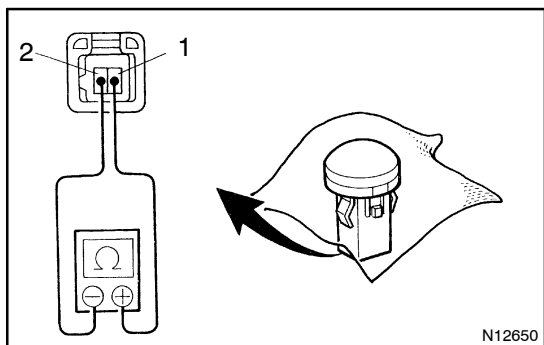
AC1TQ-01

### 1. REMOVE SOLAR SENSOR

Using a screwdriver, pull out the sensor, then disconnect the connector.

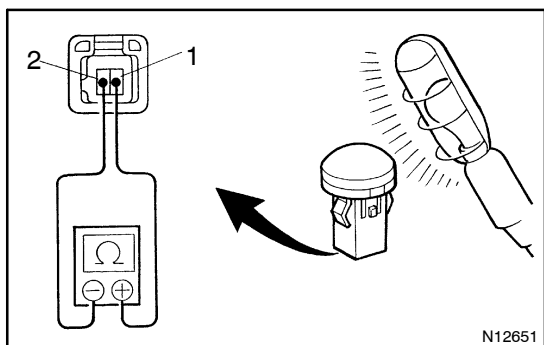
HINT:

Tape the screwdriver tip before use.



### 2. INSPECT SOLAR SENSOR CIRCUIT

- (a) Cover the sensor with a cloth, check that the no continuity exists between terminals.



- (b) Remove the cloth from the sensor and subject the sensor to electric light, check that continuity exists between terminals.

If continuity is not as specified, replace the sensor.

### 3. INSTALL SOLAR SENSOR

- (a) Connect the connector.
- (b) Insert the sensor to the instrument panel.