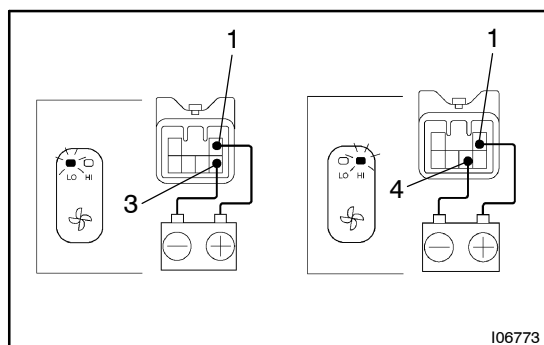


INSPECTION

1. INSPECT HEATER CONTROL ASSEMBLY

- (a) Connect the positive (+) lead from the battery to terminal 2 and negative (-) lead to terminal 6 then check that the illumination lights up.

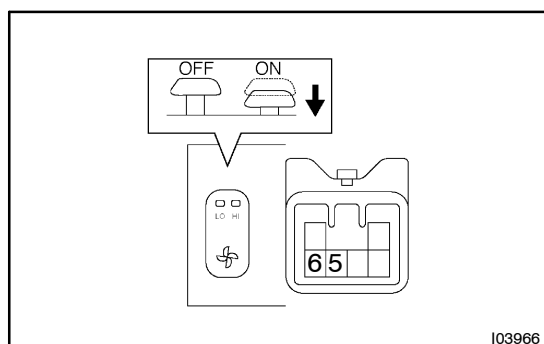
If operation is not as specified, check the heater control.



- (b) Connect the positive (+) lead from the battery to terminal 1 and negative (-) lead to each terminal, then check that the "LO" and "HI" indicators light up as shown in the chart.

Tester connection	Indicator
3	LO
4	HI

If operation is not as specified, check the heater control.



- (c) Check the continuity exists between terminals 5 and 6 while switch is pressed.

If operation is not as specified, check the heater control.

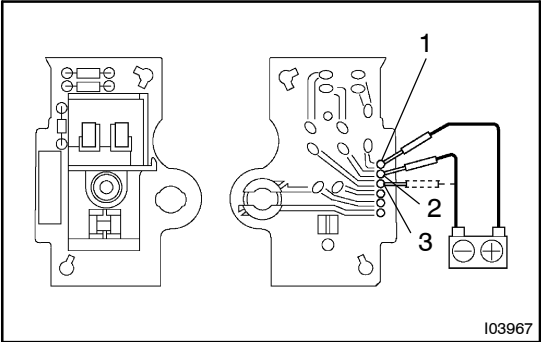
2. INSPECT HEATER CONTROL

- (a) Disassemble heater control assembly.
- (1) Release the 2 claws and pull out the temperature control knob.
 - (2) Using a screwdriver, pull out the switch knob.

HINT:

Tape the screwdriver tip before use.

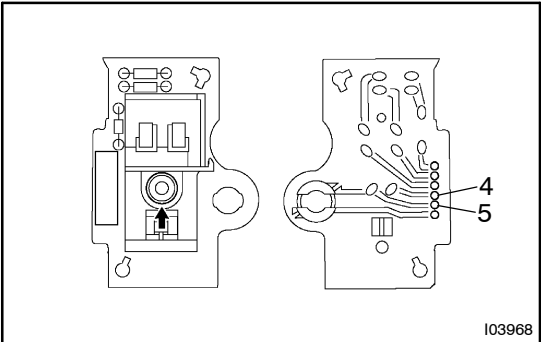
- (3) Remove the 2 screws and heater control upper retainer.
- (4) Remove the 2 screws and separate the heater control panel and heater control base.
- (5) Remove the heater control lens.
- (6) Remove the 2 screws and heater control.



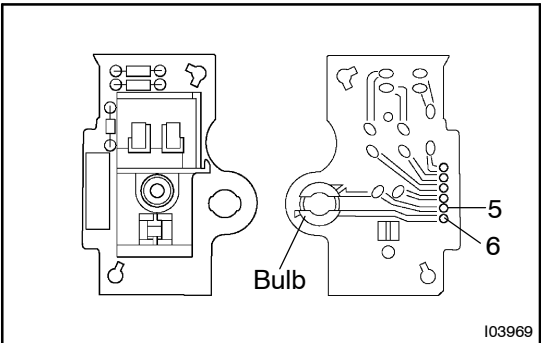
- (b) Inspect heater control.
- (1) Connect the positive (+) lead from the battery to terminal 1 and negative (-) lead to each terminal, then check that the "LO" and "HI" indicators light up as shown in the chart.

Tester connection	Indicator
3	LO
2	HI

If operation is not as specified, replace the heater control.
If operation is as specified check the wire harness.



- (2) Check the continuity exists between terminals 4 and 5 while switch is pressed.
- If no continuity exists, replace the heater control.
If continuity exists check the wire harness.



- (3) Check the continuity exists between terminals 5 and 6.
- If no continuity exists, check the bulb.
If continuity exists check the wire harness.