

POWER WINDOW CONTROL SYSTEM

TROUBLESHOOTING

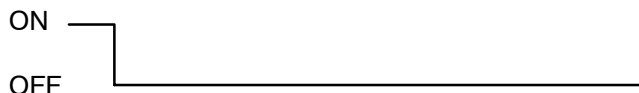
BE02C-06

1 One touch power window does not move up and down. (Prepare normal master switch.)

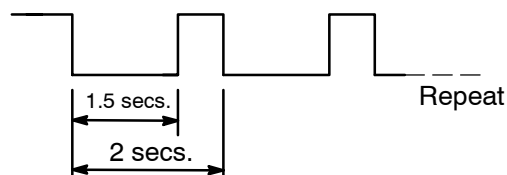
After turning the ignition switch ON and power window master switch UP or DOWN on the drivers side, check that the master switch AUTO light blinks.

- Error is classified into the following 3 types according to the way of blinking.

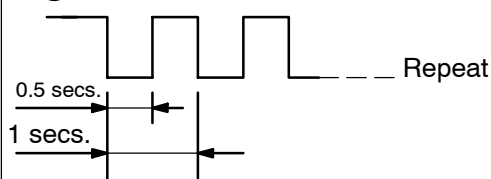
UP or DOWN



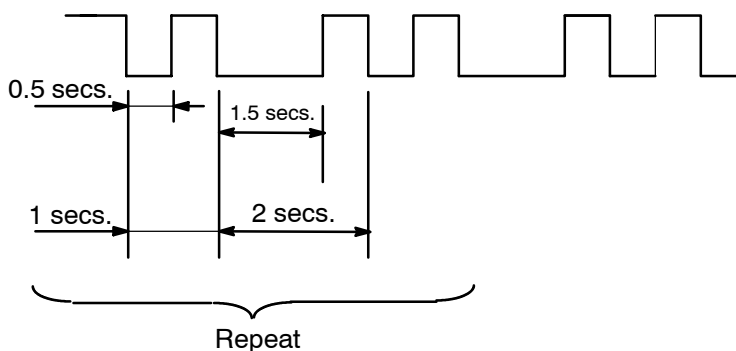
① Limit switch error



② Pulse sensor error



③ Limit switch/Pulse sensor synchronize error



- < Reference >
- When 30 seconds elapsed since blinking started, blinking finishes. (AUTO light remains ON)
 - When turning the ignition key OFF, blinking finishes.

blinks in the ① way

Remove the master switch.
(Connector connection condition)

When the fully closed driver's door is opened, does the voltage between 19 terminal and 20 terminal of master switch change from 0 V to 10 ~ 14 V?

Yes

CONTINUED ON NEXT PAGE

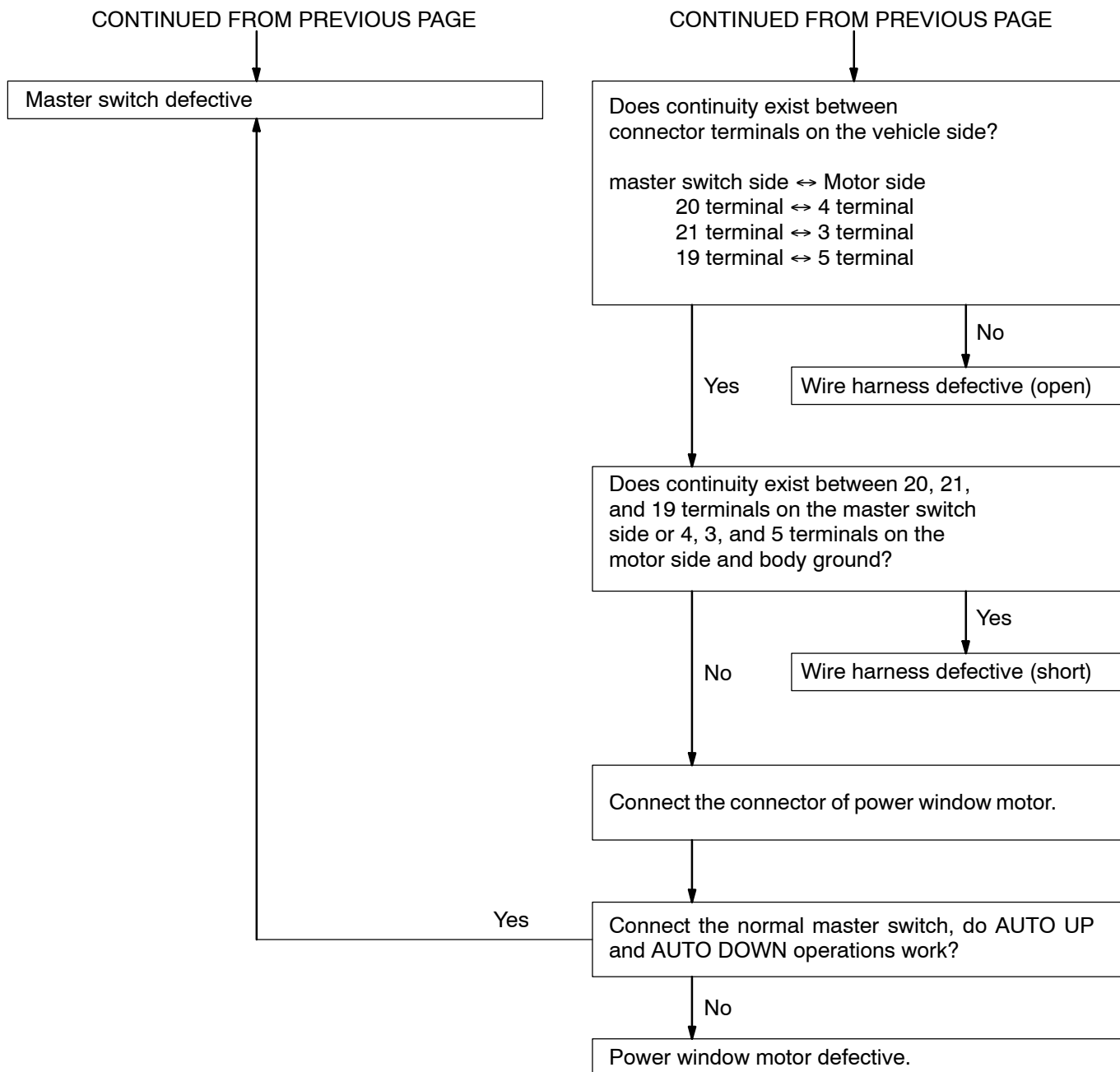
No

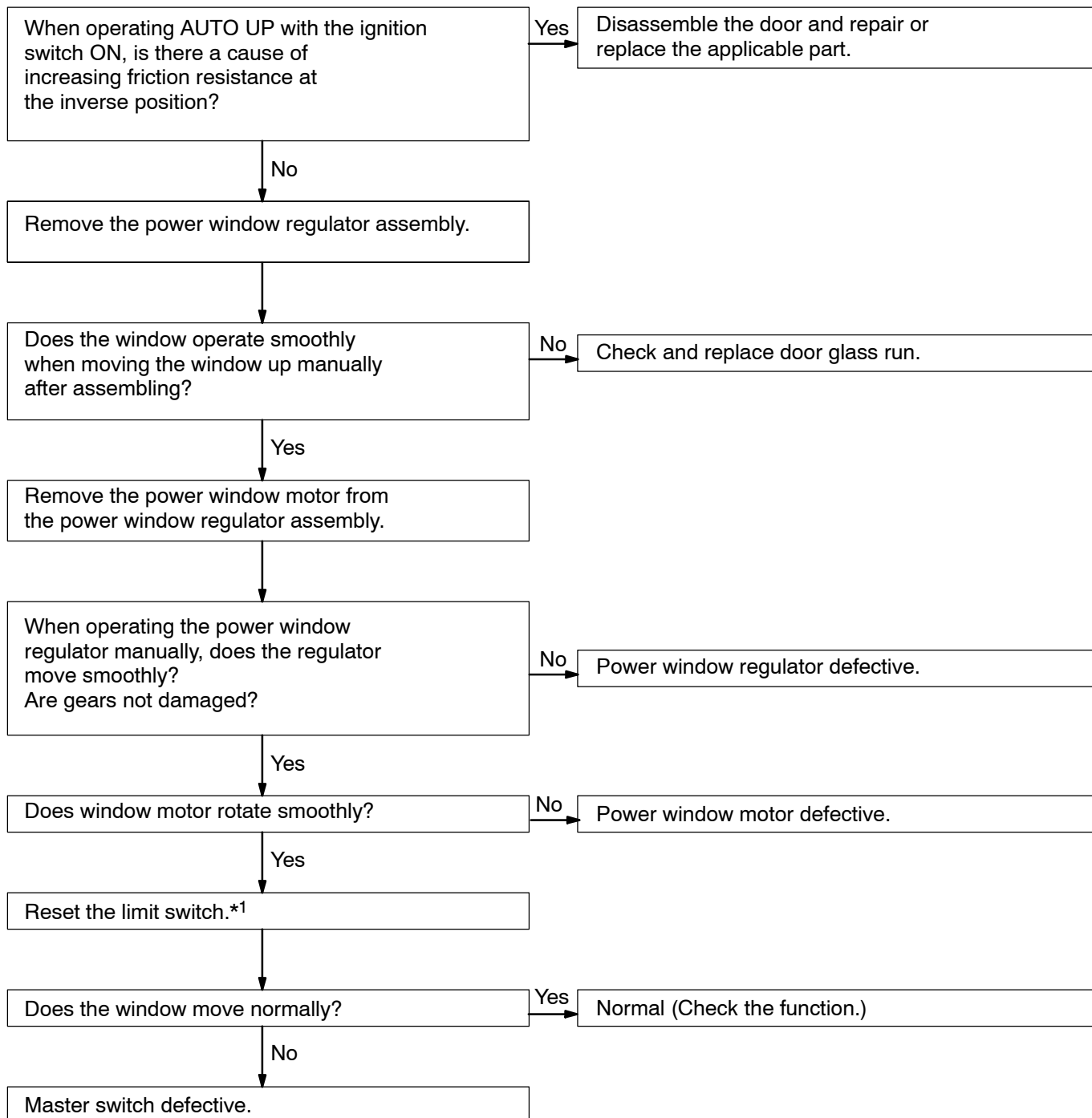
Master switch defective

blinks in the ② or ③ way

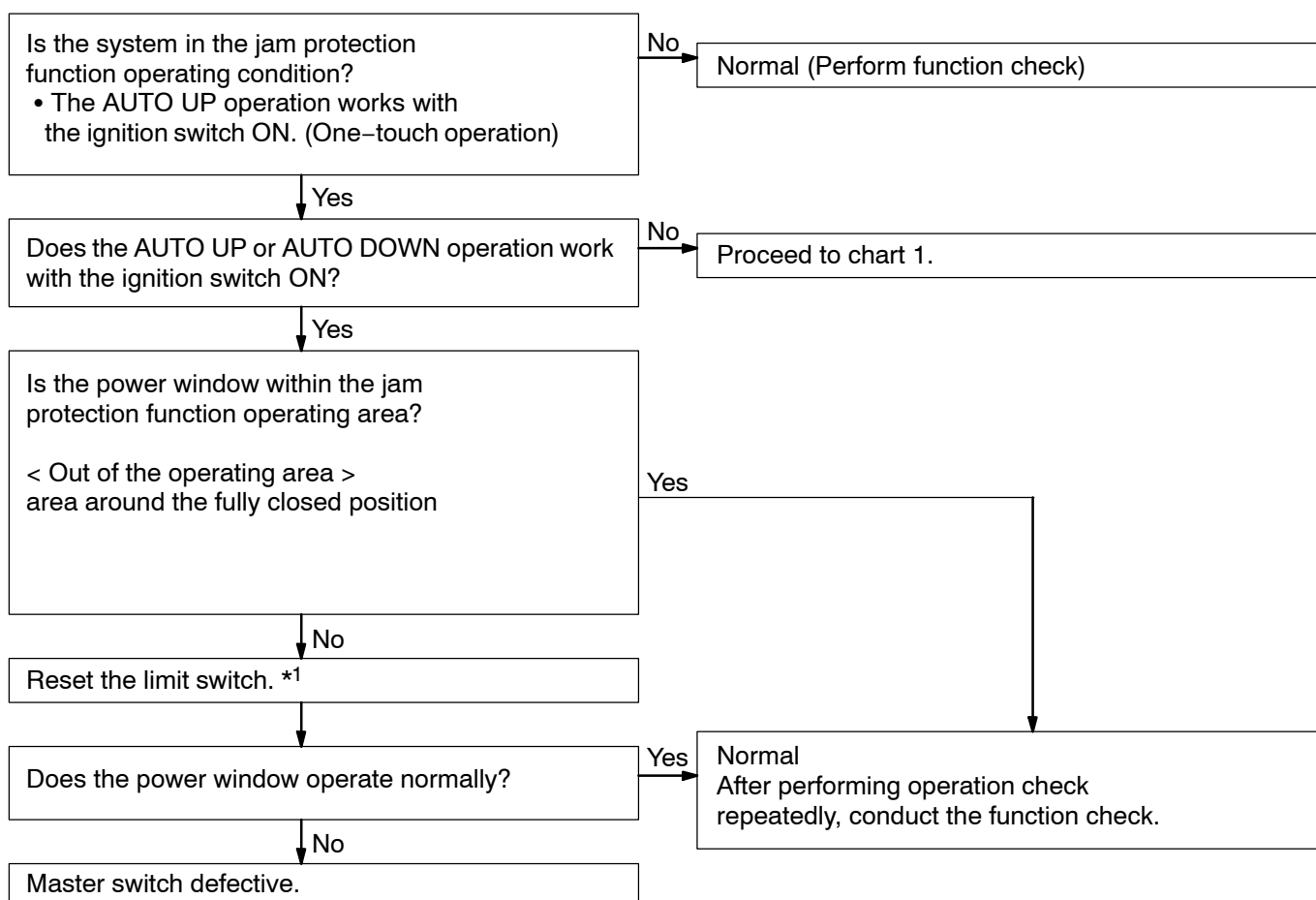
Disconnect the connectors of master switch and driver's power window motor.

CONTINUED ON NEXT PAGE



2 During AUTO UP operation, the power window moves down.

3 The DOWN function does not work though some other objects are caught in the power window glass.



*1 Resetting method of the motor for jam protection.

HINT:

- When cutting the motor away from the regulator or racing the motor, make sure to rest the motor.
- This is the operation to set limit switch at "OFF".
 - (1) Connect the motor to the vehicle side harness.
 - (2) Rotate the motor to the rising direction for 4 – 5 secs..

HINT:

Rotating the motor for 4 – 5 secs. sets the limit switch at "OFF".

(Top dead center of the door glass.)