

## DISPOSAL

### HINT:

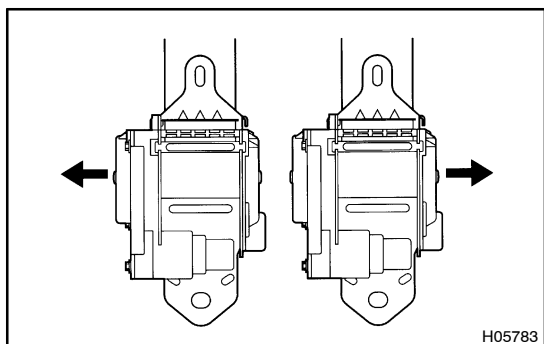
When scrapping vehicles equipped with a pretensioner or disposing of a front seat outer belt (with seat belt pretensioner), always first activate the seat belt pretensioner in accordance with the procedure described below. If any abnormality occurs with the seat belt pretensioner operation, contact the SERVICE DEPT. of the DISTRIBUTOR.

### CAUTION:

- **Never dispose of a front seat outer belt (with seat belt pretensioner) which has inactivated pretensioner.**
- **Then seat belt pretensioner produces a sizeable exploding sound when it activates, so perform the operation outdoors where it will not create a nuisance to nearby residents.**
- **Activate the seat belt pretensioner in a safe place outdoors, on a flat concrete area.**
- **After unlocking the sensor, take care not to jolt or drop the seat belt pretensioner.**
- **Use gloves and safety glasses when handling a activated seat belt pretensioner.**
- **Always stand at least 5 m (16 ft) away from the seat belt pretensioner when activating it.**
- **Then activated seat belt pretensioner is very hot, so wait 30 minutes for it cool down. Do not splash water on it at all.**
- **Put the seat belt pretensioner in a vinyl bag, seal the bag and dispose of it.**
- **Seat belt pretensioners should always be activated before disposal.**

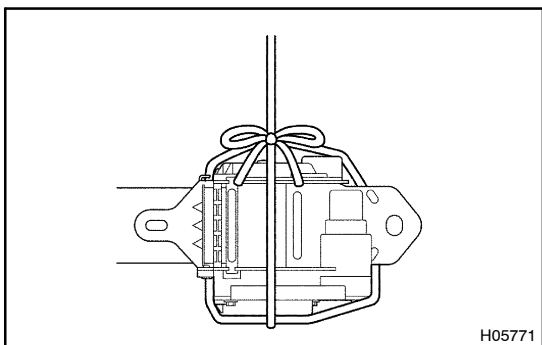
### 1. REMOVE FRONT SEAT OUTER BELT

(See page BO-221)

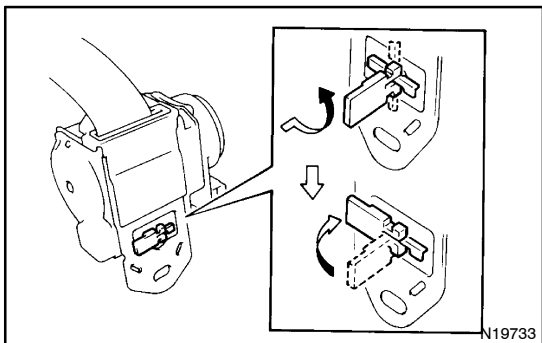


### 2. PREPARATION FOR ACTIVATING SEAT BELT PRE-TENSIONER

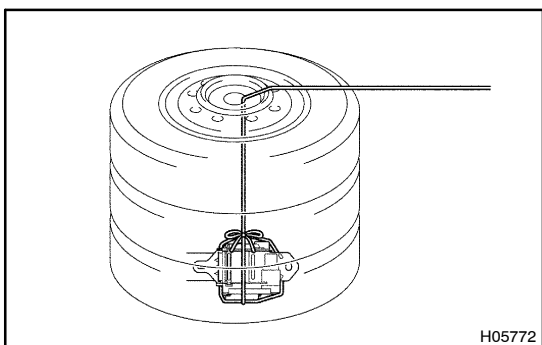
- (a) Cut the belt off near the seat belt retractor.
- (b) Check that which side of the seat belt pretensioner is the vehicle front side.



- (c) As shown in the illustration, tie the seat belt pretensioner so that the vehicle front side of the pretensioner is facing downward and that the pretensioner is horizontal.



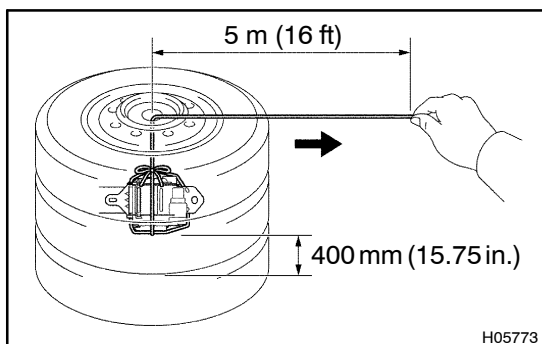
- (d) Unlock the sensor by operating in the safety lock release lever as shown in the illustration.



- (e) Pile 2 tires and 1 tire with wheel around the seat belt pretensioner. Pass the cord through the wheel of the top tire.

**CAUTION:**

**Do not apply any shock to the seat belt pretensioner.**

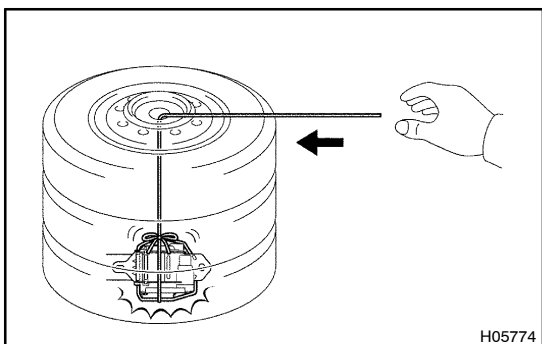


**3. ACTIVATE SEAT BELT PRETENSIONER**

- (a) Stand at least 5 m (16 ft) away from the seat belt pretensioner and pull the pretensioner 400 mm (15.75 in.) off the ground.

**CAUTION:**

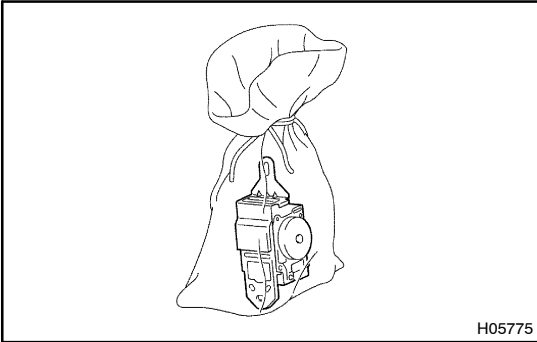
- Before pulling the seat belt pretensioner up, check that the area around the tires is safe.
- Before activating the seat belt pretensioner, always warn anyone near by in a loud voice.



- (b) Release the cord and drop the seat belt pretensioner.

**CAUTION:**

The activated seat belt pretensioner is very hot, so wait 30 minutes for it to cool down. Do not splash water on it at all. If the sensor lock is not fully released or if the seat belt pretensioner is not suspended horizontally, the seat belt pretensioner may not activate. If this occurs, avoid any shocks to the pretensioner, lock the sensor and do the activation process again from the start.

**4. DISPOSAL OF SEAT BELT PRETENSIONER**

Put the seat belt pretensioner in a vinyl bag, seal the bag and dispose of it.

**CAUTION:**

- **Use gloves and safety glasses when handling a activated seat belt pretensioner.**
- **Always wash your hands after completing disposal of the seat belt pretensioner.**