

DTC	C 1719 / 19	Fluid Temperature Sensor Circuit
------------	--------------------	-----------------------------------------

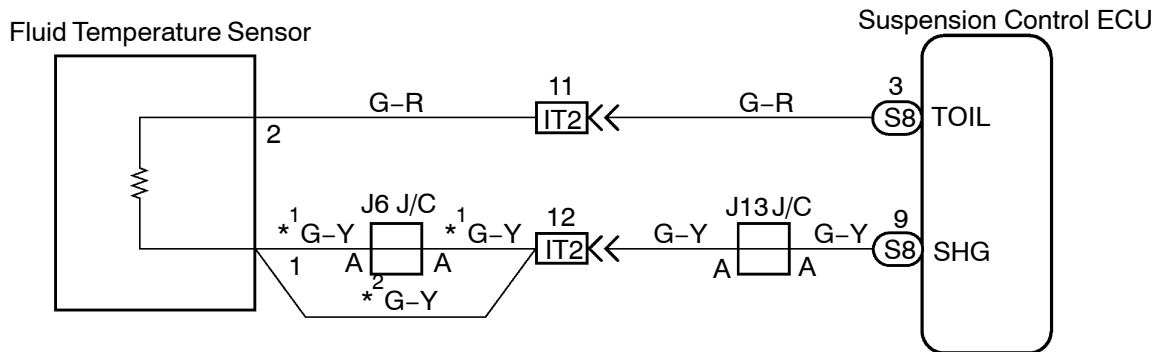
CIRCUIT DESCRIPTION

This circuit is sending the data to detect the fluid temperature of the pump and to judge the abnormality of the fluid by the ECU.

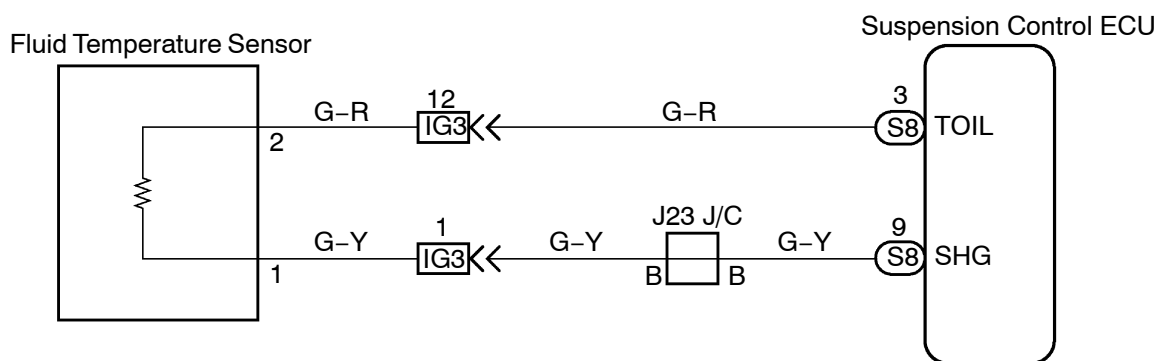
DTC No.	DTC Detecting Condition	Trouble Area
C1719 / 19	When detecting the abnormal signal from the fluid temp. sensor (Fluid temp. sensor terminal voltage of ECU is 0.1 V or less or 4.8 V or more) for every 0.01 sec. and that condition continued for 0.5 sec. and had been consisted 10 times.	<ul style="list-style-type: none"> • Fluid temperature sensor • Fluid temperature sensor circuit • Suspension control ECU

WIRING DIAGRAM

LHD



RHD



- *¹: 1HD –T Engine
*²: 2UZ –FE and 1HD –FTE Engine

INSPECTION PROCEDURE

Start the inspection from step 1 in case of using the hand-held tester and start from step 2 in case of not using the hand-held tester.

1 Check output value of fluid temperature sensor.

PREPARATION:

- (a) Connect the hand-held tester to the DLC3.
- (b) Turn the ignition switch ON and push the hand-held tester main switch ON.
- (c) Select the DATALIST mode on the hand-held tester.

CHECK:

Check the temperature value of the fluid temperature sensor displayed on the hand-held tester.

OK:

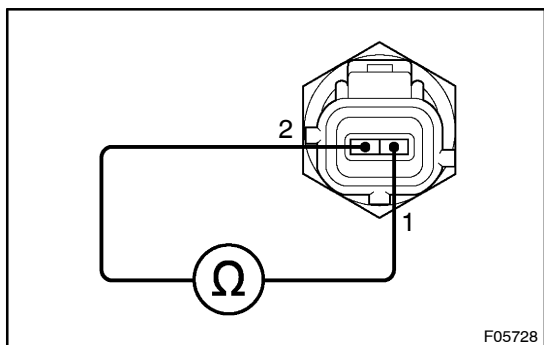
Same as actual fluid temperature

OK

Clear the DTC (See page DI-208).

NG

2 Check fluid temperature sensor.



PREPARATION:

Disconnect the fluid temperature sensor connector.

CHECK:

Measure resistance between terminals 1 and 2 of fluid temperature sensor connector.

OK:

Resistance: $2.45 \pm 0.45 \text{ k}\Omega$ at 20°C (68°F)

NG

Replace fluid temperature sensor.

OK

- | | |
|----------|------------------------------------------------------------------------------------------------------------------------------------------------|
| 3 | Check for open and short circuit in harness and connector between fluid temperature sensor and suspension control ECU (See page IN-35). |
|----------|------------------------------------------------------------------------------------------------------------------------------------------------|

NG**Repair or replace harness or connector.****OK****Clear the DTC (See page DI-208).**