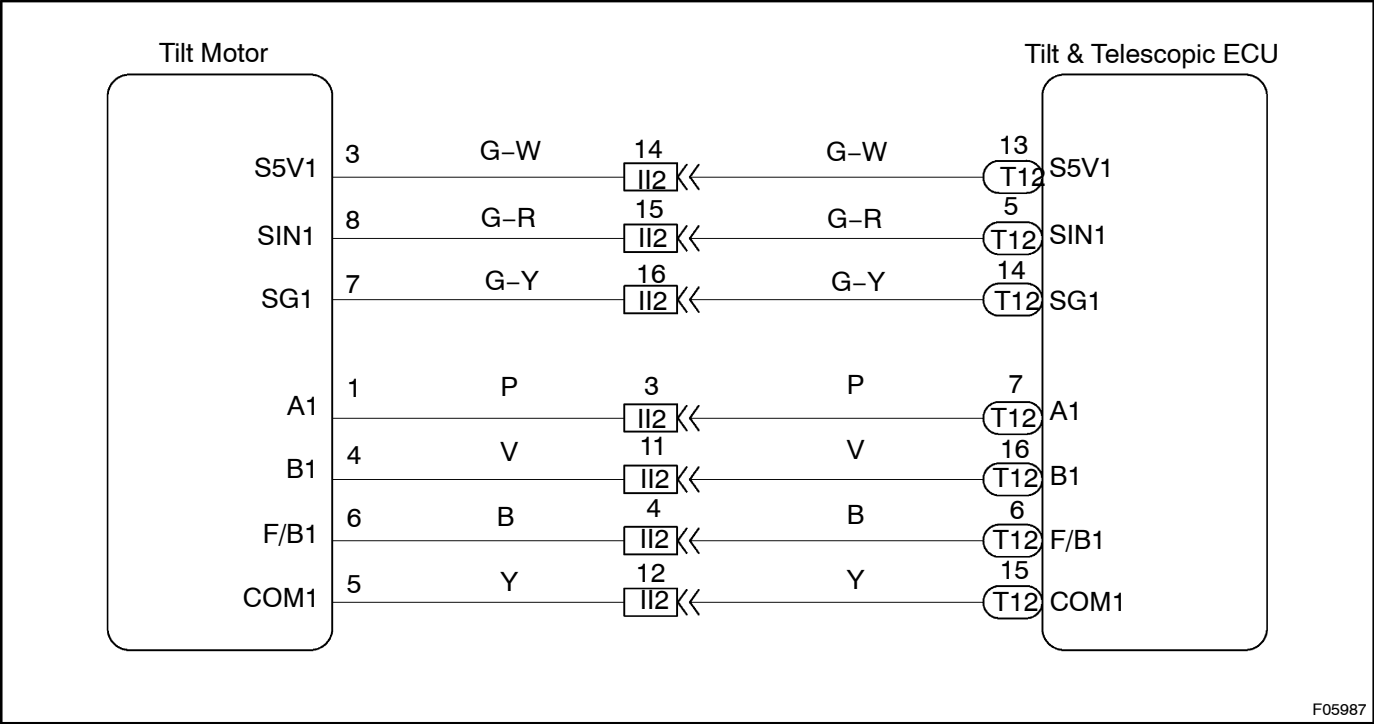


Tilt Motor circuit

CIRCUIT DESCRIPTION

The ECU provided both +B and ground for the tilt motor.
Reversing polarity of the applied voltage reverses the motor.

WIRING DIAGRAM

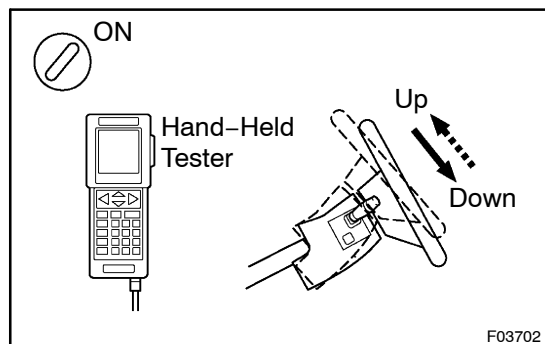


INSPECTION PROCEDURE

In case of using hand-held tester, start inspection from step 1.

In case of not using hand-held tester, start inspection from step 2.

1 Check tilt motor operation using hand-held tester.



PREPARATION:

- Connect the hand-held tester to the DLC3.
- Turn ignition switch ON and push the hand-held tester main switch ON.
- Select the ACTIVE TEST mode on the hand-held tester.

CHECK:

Check that the steering wheel tilts up (down) and confirm that tilt position value change when the ACTIVE TEST is carried out.

OK:

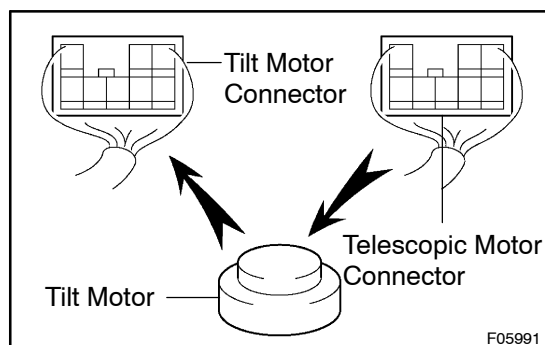
Steering wheel must be moved upward (downward).
Tilt position value must be changed.

OK

Proceed to next circuit inspection shown on the problem symptoms table. (See page DI-416)

NG

2 Check tilt motor.



PREPARATION:

- Disconnect tilt motor connector and telescopic motor connector.
- Remove tilt motor. (See page SR-30)

CHECK:

Connect telescopic motor connector to tilt motor. Then confirm that tilt motor moved when operating the manual switch.

NG

Replace tilt motor.

OK

3**Check harness and connector between tilt and telescopic ECU and tilt motor.**
([See page IN-35](#))**NG****Repair or replace harness or connector.****OK****Proceed to next circuit inspection shown on
the problem symptoms table.**
([See page DI-416](#))