

## PRE-CHECK

### 1. THEFT DETERRENT SYSTEM

When the system is set to the theft deterrent mode and any of the following conditions are met, the system sounds the horns and flashes the headlights and the taillights for approx. 1 minute.

At the same time the system locks all doors (If all door are not locked at once, the system repeats door locking operation every 0.55 seconds during the one minute alarm time).

There are 2 modes in this system, which are active mode and passive mode.

All initial setting are performed in active mode. It can be switched to passive mode by specified operation. (See step 4. CHANGING METHOD OF PASSIVE MODE)

Condition:

- Any of the doors (Including the engine hood) is unlocked or opened without the key\* 1 or RKE.
- The battery terminal is disconnected and reconnected.
- The system receives panic signal from remote keyless entry. \*2

\*1: Only active arming mode.

\*2: When the ignition key is not inserted in the key cylinder.

There are 4 conditions in this system which are disarming condition, disarming preparation condition, arming condition and alarming condition.

- (a) Disarming condition:
  - (1) When the alarming function does not operate.
  - (2) When theft deterrent function is not performed.
- (b) Disarming preparation condition:
  - (1) Time until transferring to disarming condition.
  - (2) Theft deterrent function is not performed.
- (c) Arming condition:

When theft deterrent function is possible.

## (d) Alarming condition:

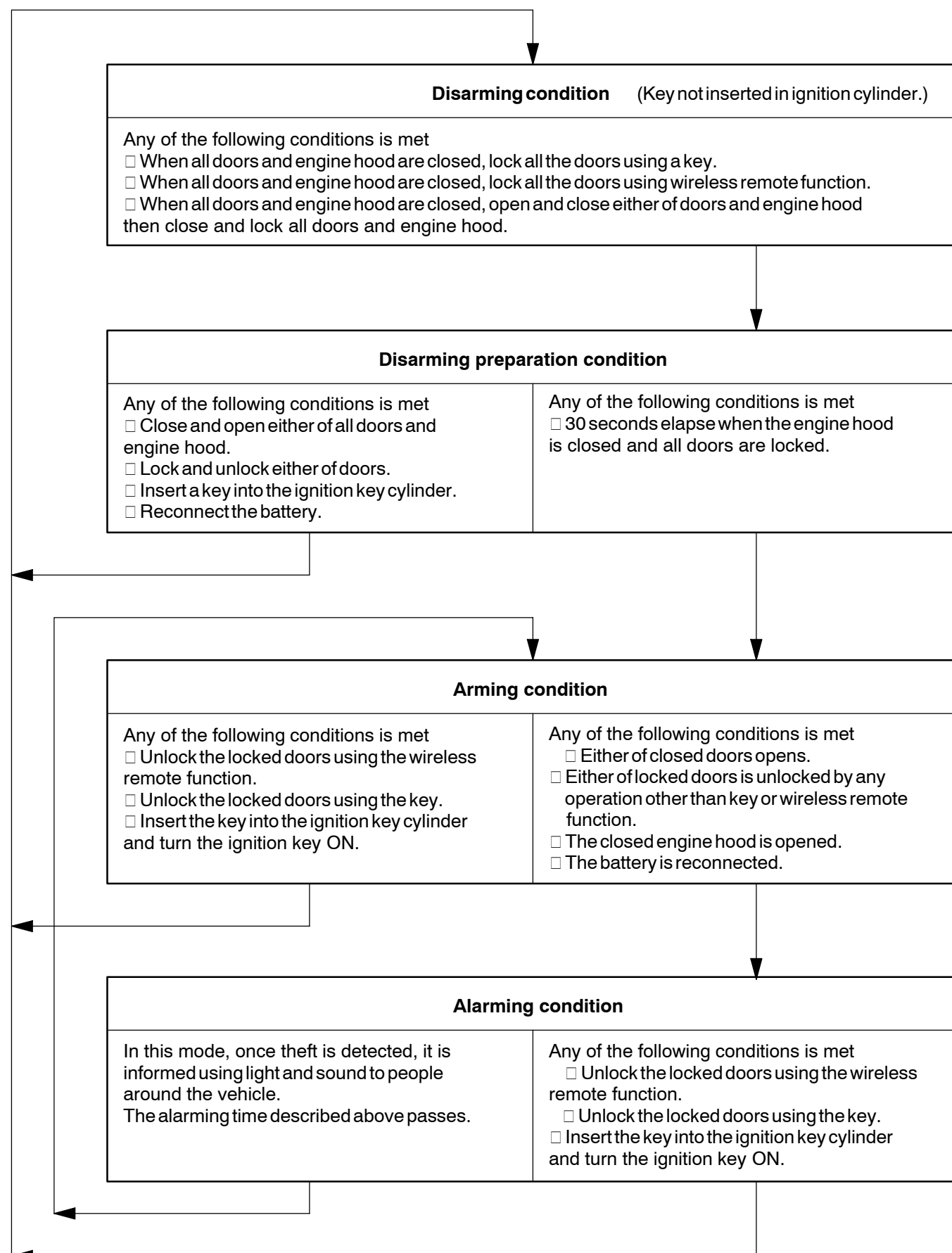
Is this condition, once theft is detected, it is informed using light and sound to people around the vehicle.

Refer to the table for alarming method or time.

|                 |                            |
|-----------------|----------------------------|
| Alarming method | Horn                       |
|                 | Security horn              |
|                 | Headlight                  |
|                 | Taillight                  |
| Alarming time   | 60 seconds                 |
| Alarming output | Continuous 0.25 secs. (ON) |
|                 | 0.25 secs. (OFF)           |

In the arming condition when either of doors is unlocked and with not key in the key cylinder, force lock signal is output.

## 2. ACTIVE ARMING MODE



**Indicator light output:**

| Condition                    | Indicator light |
|------------------------------|-----------------|
| Disarming condition          | OFF             |
| Arming preparation condition | ON              |
| Arming condition             | OFF             |
| Alarming condition           | ON              |

**HINT:**

Even in disarming condition, the indicator light flash. (Due to the signal output from immobilizer system). The indicator always flashes receiving the signal from the immobilizer system at any time in the arming condition.

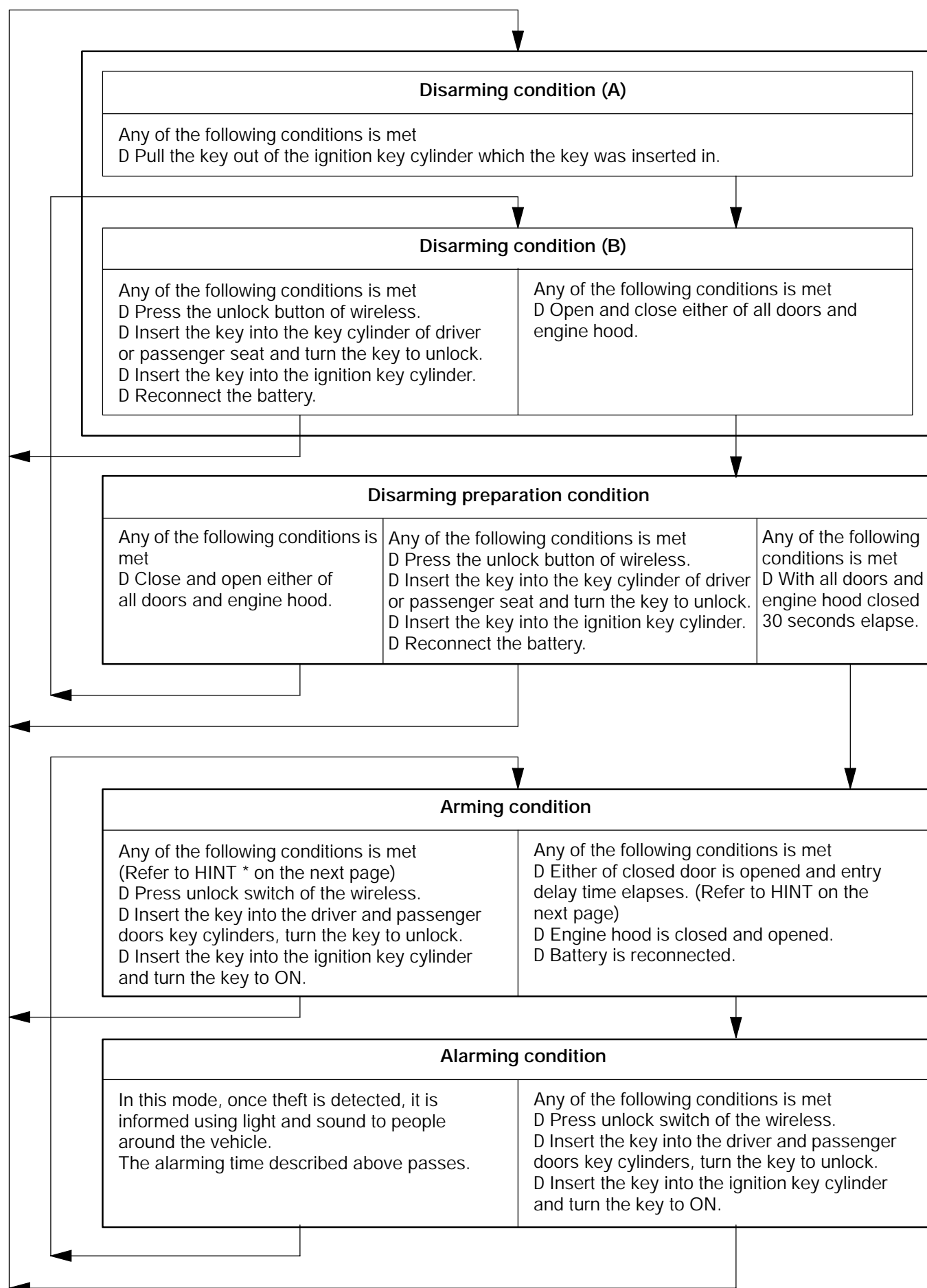
Flashing frequency:

0.75 seconds (ON)

1.25 seconds (OFF)

**3. PASSIVE ARMING MODE**

- This mode can be switched according to the specified operation.
- All initially set modes (when shipped from factory) are active mode. (No passive mode)

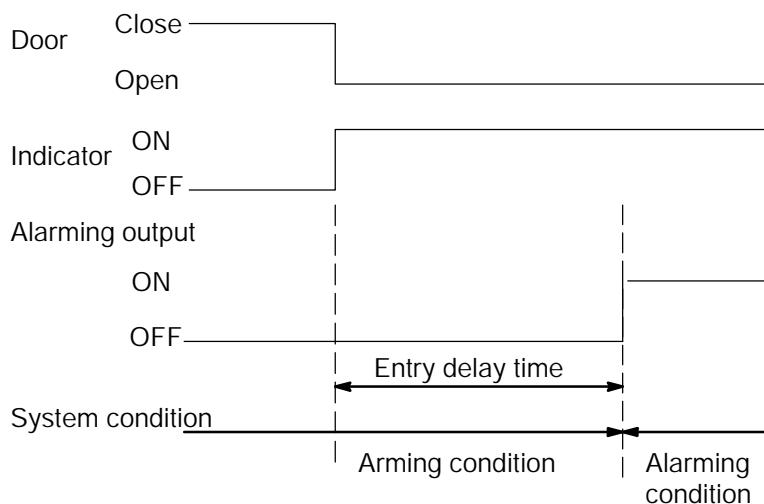


**HINT:**

In arming condition either closed door is opened, entry delay occurs. (15 secs.)

During this time, the mode transfers to disarming condition when the condition described above \* is met.

When the condition is not met, the system judges theft occurs, the mode transfers to alarming condition.

**(a) Indicator light output:**

| Condition                              | Indicator light |
|--|-----------------|
| Disarming condition                    | OFF             |
| Arming preparation condition           | ON              |
| Arming condition<br>(Entry delay time) | OFF<br>(ON)     |
| Alarming condition                     | ON              |

**HINT:**

Even in disarming condition, the indicator light flash. (Due to the signal output form immobilizer system). The indicator always flashes receiving the signal from the immobilizer system at any time in the arming condition.

**Flashing frequency:**

0.75 seconds (ON)

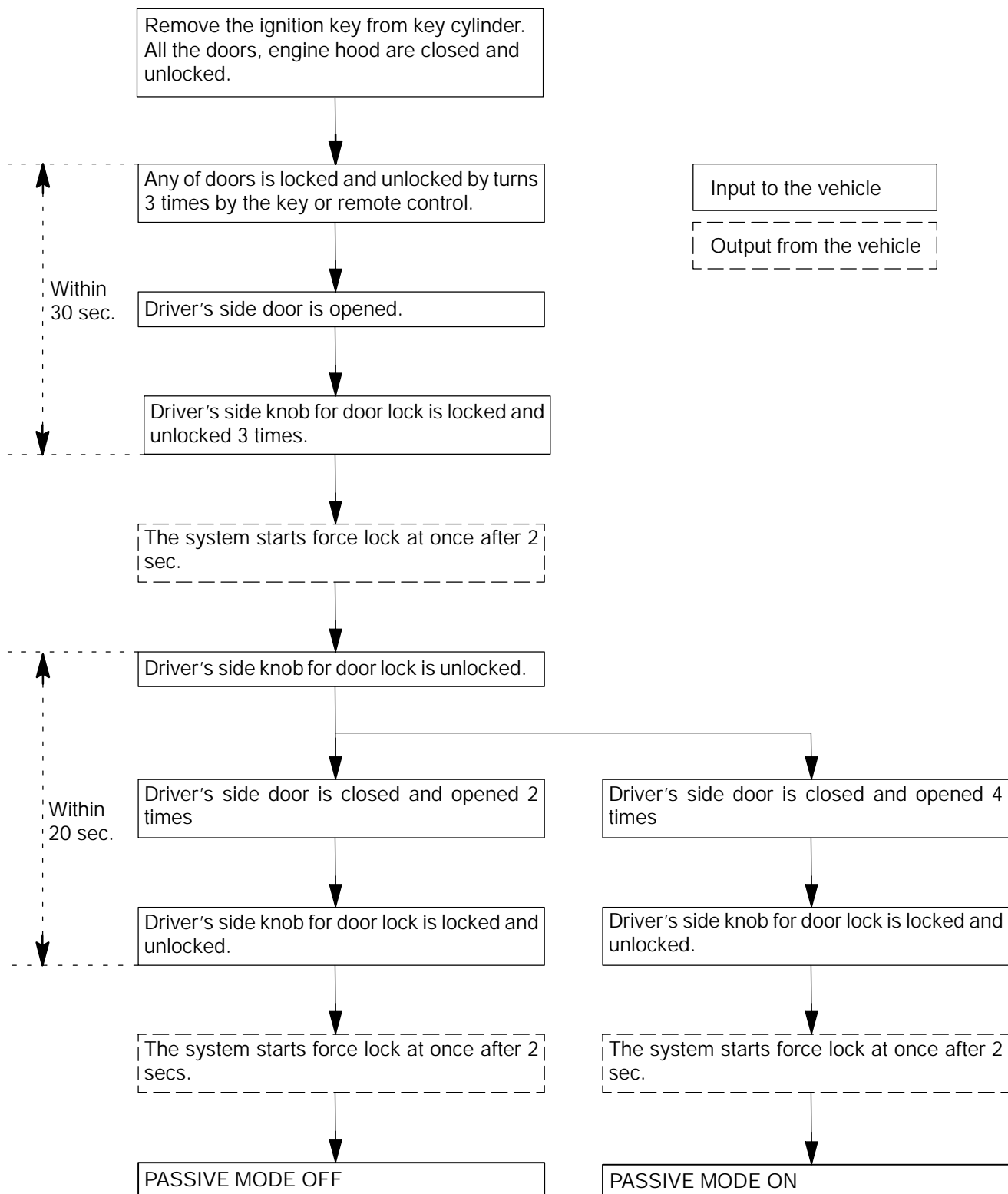
1.25 seconds (OFF)

## (b) Transfer to active mode:

In each passive mode, when "disarming condition of active mode → arming preparation transfer condition" is met, the active mode transfers to each condition. In this case, active mode continues till disarming condition.

|   |   |
|---|---|
| Passive mode when transfer condition is met.  | Active mode transfer condition  |
| Disarming condition                           | Arming preparation condition  |
| Arming preparation condition                  | Arming preparation condition  |
| Arming condition<br>(During entry delay time) | Arming condition<br>(After alarming time has elapsed, arming condition) |
| Alarming condition                            | After alarming time has elapsed, arming condition                       |

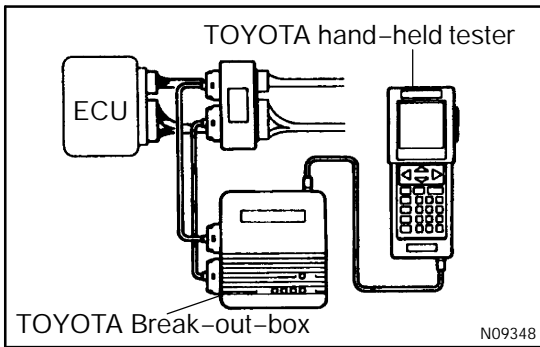
#### 4. CHANGING METHOD OF PASSIVE MODE (ON or OFF)



HINT:

D Initial mode is PASSIVE MODE OFF.

D If there is a different signal in the middle of changing. It is invalid.



5. **ECU TERMINAL VALUES MEASUREMENT BY USING TOYOTA BREAK-OUT-BOX AND LEXUS HAND-HELD TESTER**

- (a) Hook up the TOYOTA break-out-box and TOYOTA hand-held tester to the vehicle.
- (b) Read the ECU input/ output values by following the prompts on the tester screen.
- (c) Please refer to the TOYOTA hand-held tester has a "Snapshot" function. This records the measured data and is effective in the diagnosis of intermittent problems.