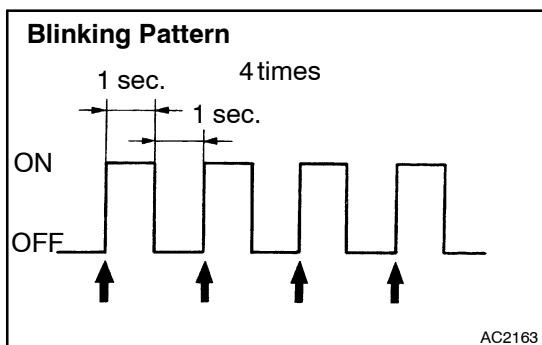


PRE-CHECK

1. INDICATOR CHECK

- (a) Turn the ignition switch on while pressing the A/C switch and R/F SW simultaneously.



- (b) Check that all the indicators light up and go off at 1 second intervals 4 times in succession.

HINT:

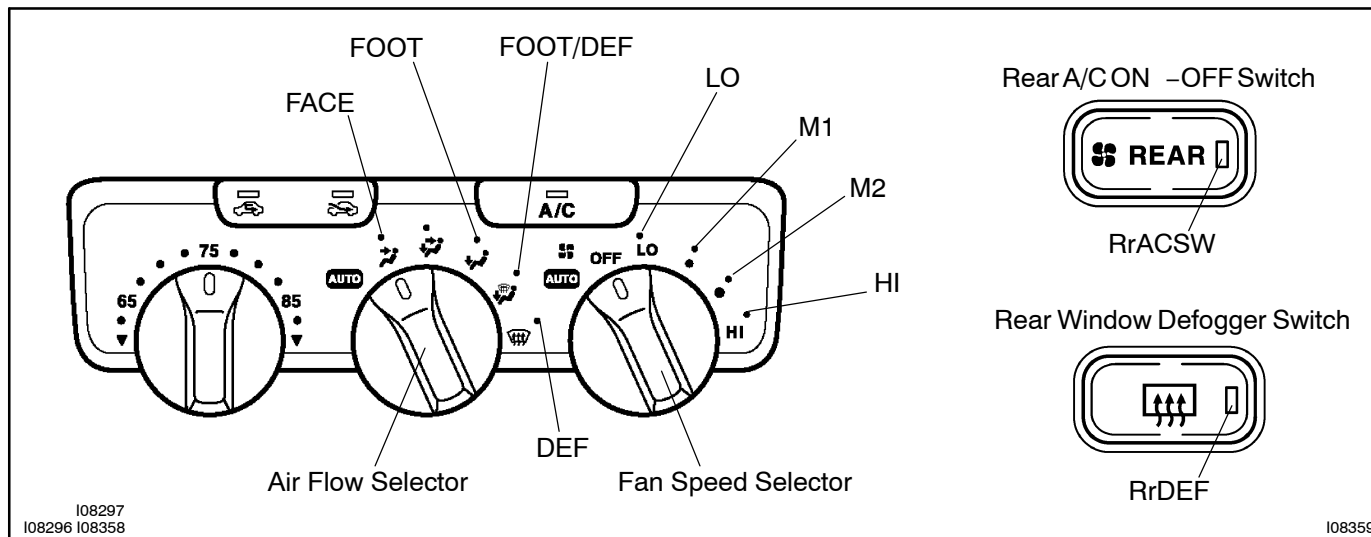
- After the indicator check is ended, the diagnostic sensor check begins automatically.
- Press the OFF switch when cancelling the check mode.

2. PANEL DIAGNOSIS SYSTEM

If a trouble occurs in A/C system, the specified lamp on the control panel starts blinking during the diagnostic sensor check.

During system diagnosis, a trouble is indicated on the panel by the blinking of a specified light instead of a code display (See TROUBLE CODE CHART).

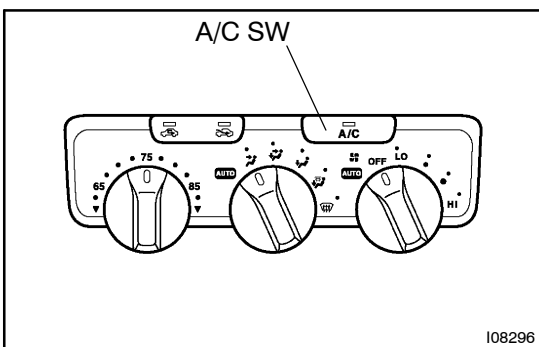
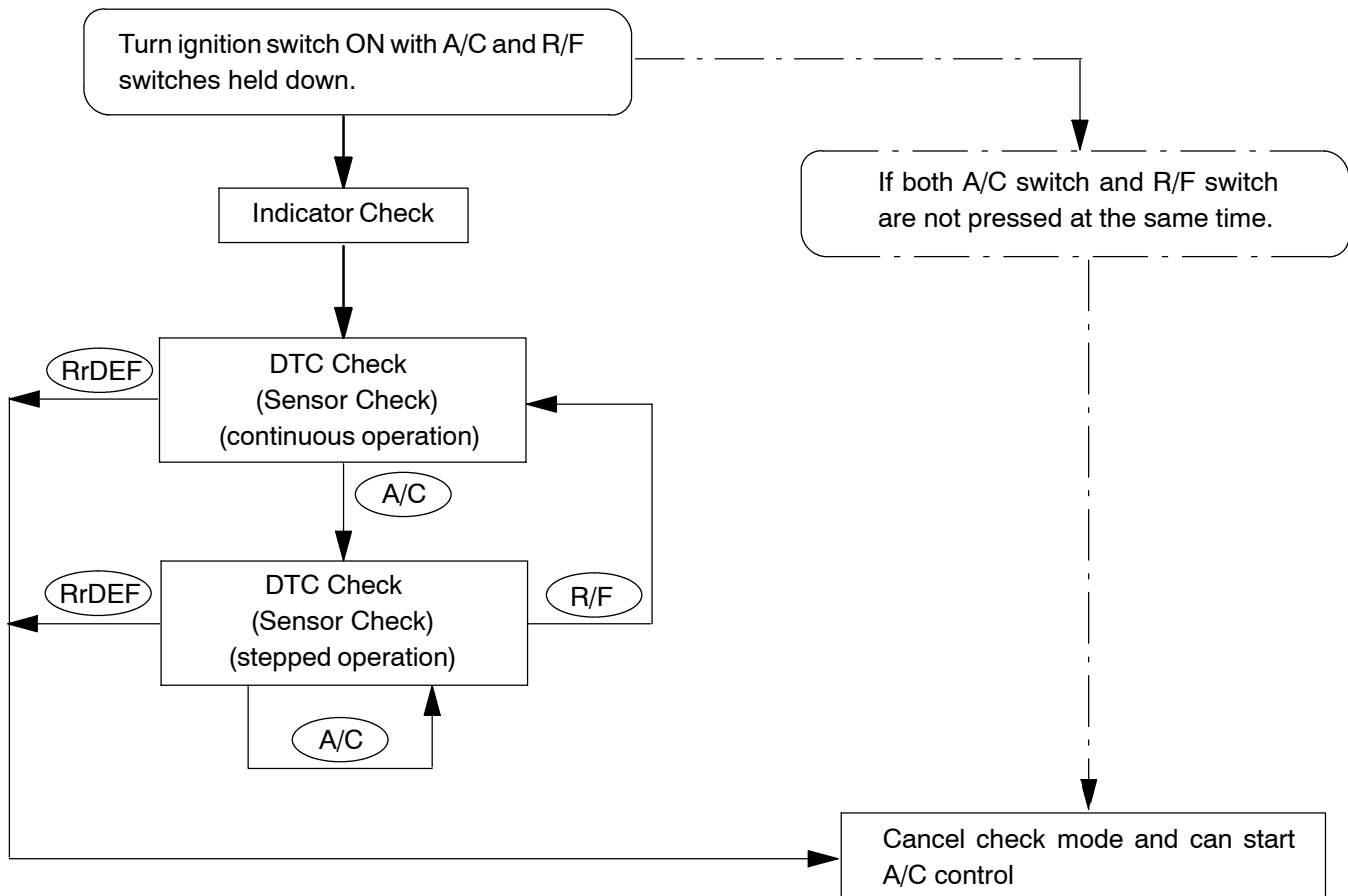
For example, when a trouble occurs in solar sensor circuit, the RrDEF switch indicator and DEF mode switch indicator will be blinking during the diagnostic sensor check.



No.	Indicator name	Symbol
1	Rear window defogger switch indicator light	RrDEF
2	Rear A/C ON -OFF switch indicator light	RrACSW
3	Air flow selector: FACE	FACE
4	Air flow selector: FOOT	FOOT
5	Air flow selector: FOOT and DEFROSTER	F/D
6	Air flow selector: DEFROSTER	DEF
7	Fan Speed Selector: LO	LO
8	Fan Speed Selector: M 1	M1
9	Fan Speed Selector: M2	M2
10	Fan Speed Selector: HI	HI

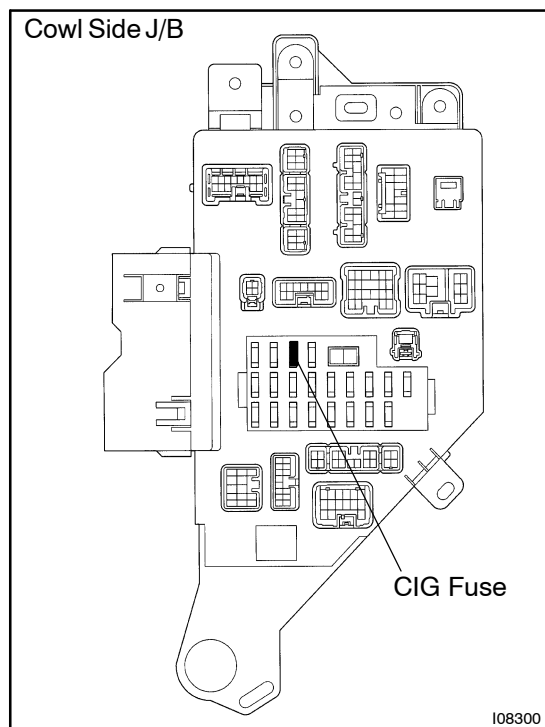
3. LIST OF OPERATION METHODS

By operating each of the A/C control switches as shown in the diagram below, it is possible to enter the diagnosis check mode.



4. DIAGNOSTIC SENSOR CHECK

- Perform an indicator check. After the indicator check is completed, the system enters the diagnostic sensor check mode automatically.
- Check the LED blinking on the panel. Refer to the list of codes on [page DI-853](#) when translating the trouble code from the LED blinking.
If the slower display is desired, press the A/C switch and change it to step operation. Each time the A/C switch is pressed, the blinking LED changes by 1 step.



5. CLEARING DTC

- (a) Pull out the CIG fuse in Cowl Side J/B for 10 sec. or longer to clear the trouble code's memory.
- (b) After reinserting the fuse, check that the normal code is output.