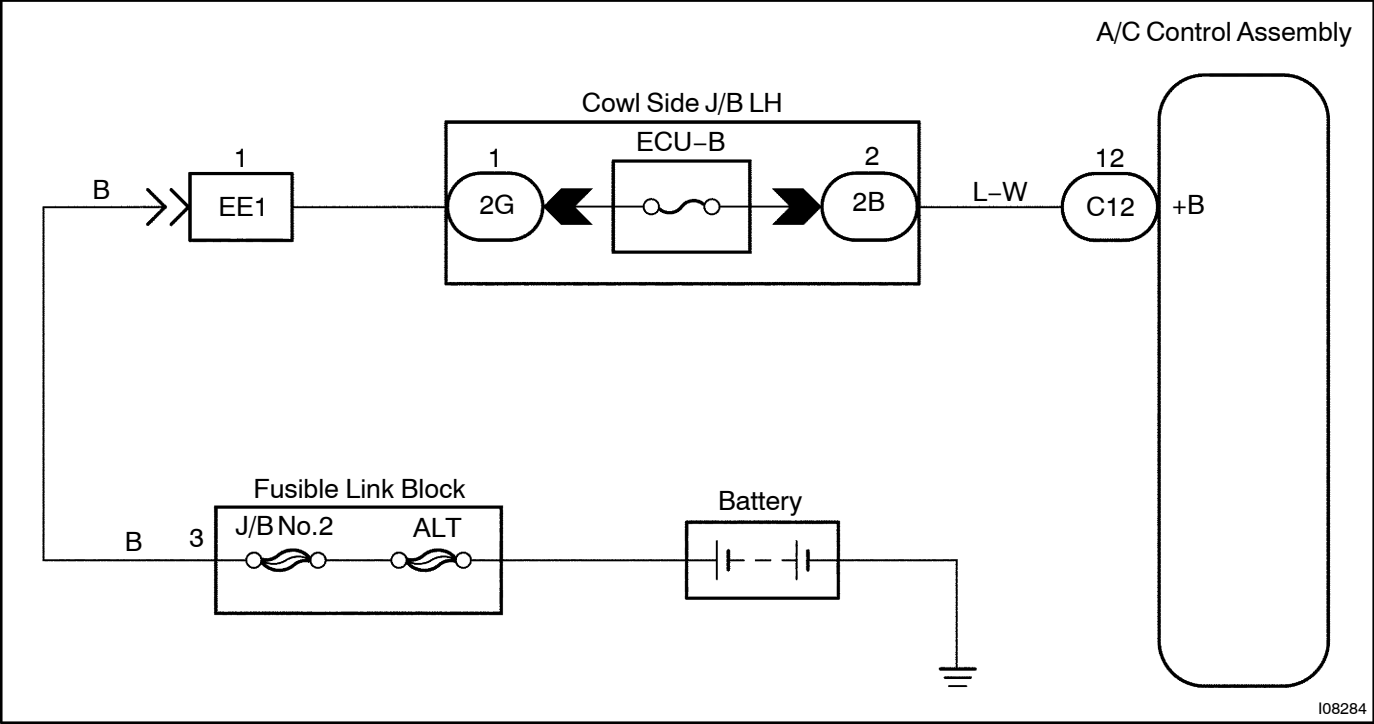


Back Up Power Source Circuit

CIRCUIT DESCRIPTION

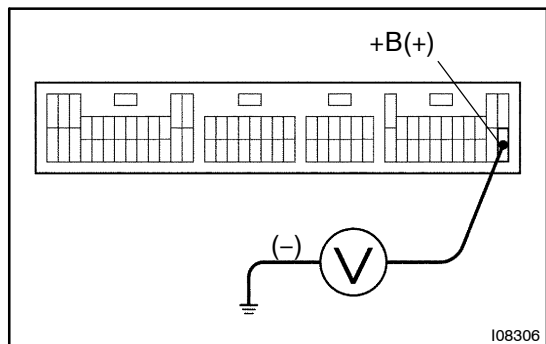
This is the backup power source for the A/C control assembly. Power is supplied even when the ignition switch is off and is used for diagnostic trouble code memory, etc.

WIRING DIAGRAM



INSPECTION PROCEDURE

- 1 Check voltage between terminal +B of A/C amplifier assembly connector and body ground.**

**PREPARATION:**

Remove the A/C amplifier with connector still connected.

CHECK:

Measure voltage between terminal +B of A/C amplifier connector and body ground.

OK:

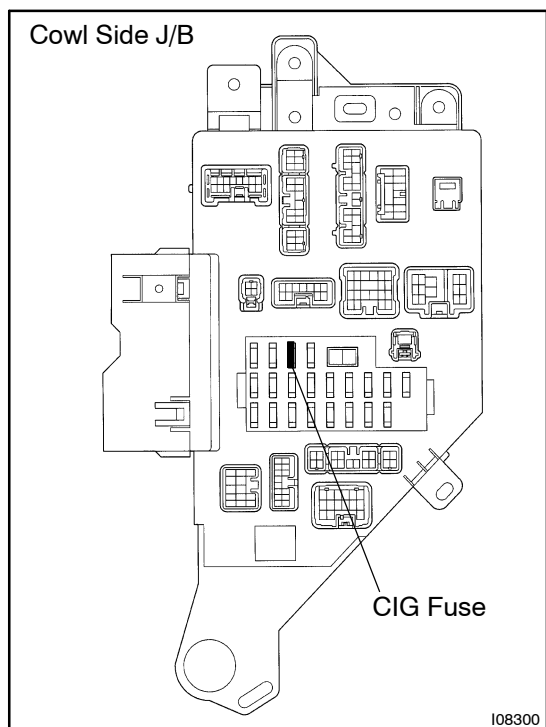
Voltage : Battery positive voltage

OK

Proceed to next circuit inspection shown on problem symptoms table ([See page DI-859](#)).

NG

- 2 Check CIG fuse.**

**PREPARATION:**

Remove CIG fuse from cowl side J/B.

CHECK:

Check continuity of CIG fuse.

OK:

Continuity

NG

Check for short in all the harness and components connected to the CIG fuse (See attached wiring diagram).

OK

Check and repair harness and connector between A/C amplifier.