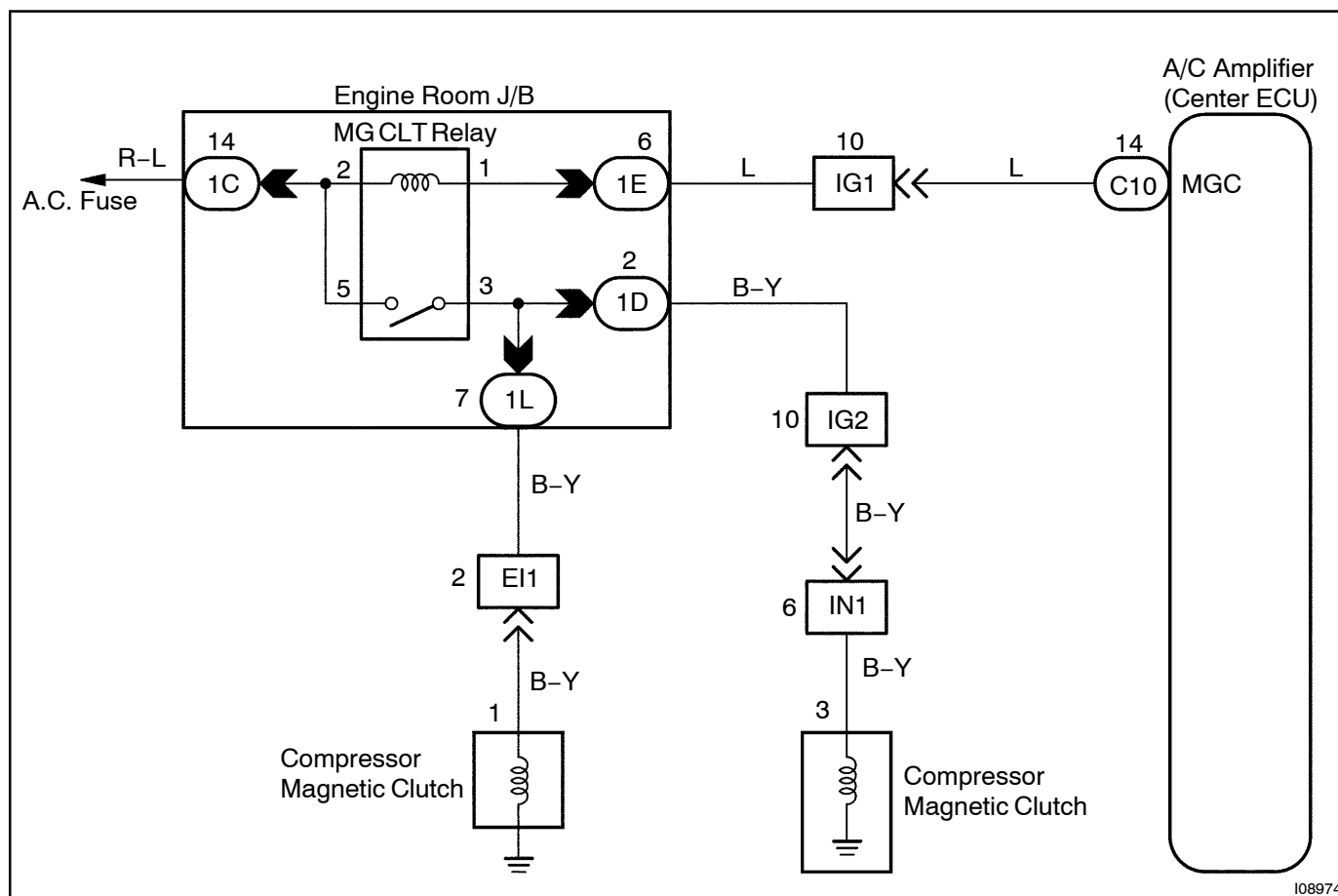


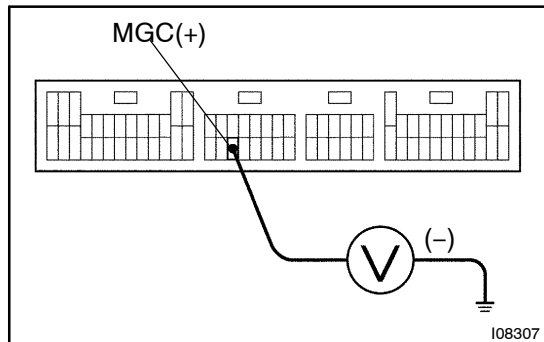
## CIRCUIT DESCRIPTION

## WIRING DIAGRAM



## INSPECTION PROCEDURE

- 1 Check voltage between terminal MGC of A/C amplifier connector and body ground.**

**CHECK:**

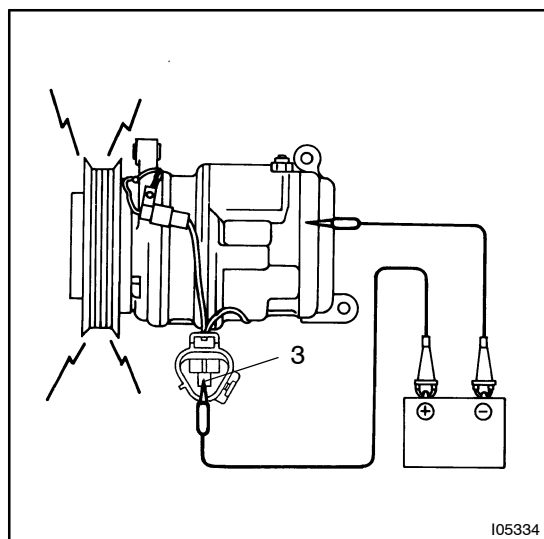
- Start engine.
- Push AUTO SW.
- Measure voltage between terminal MCG of A/C amplifier connector and body ground when A/C switch is ON and OFF.

**OK:**

A/C switch	Voltage
ON	10 - 4 V
OFF	0 V

**OK****Check and replace A/C amplifier.****NG**

- 2 Check A/C compressor magnetic clutch.**

**PREPARATION:**

Disconnect magnetic clutch connector.

**CHECK:**

Connect positive (+) lead connected to battery to magnetic clutch connector terminal 3.

**OK:**

**Magnetic clutch is energized.**

**NG****Repair A/C compressor magnetic clutch.****OK**

**3****Check harness and connector between A/C compressor and MC CLT relay**  
**(See page IN-35)****NG****Repair or replace harness or connector.****OK****Check and replace A/C amplifier.**