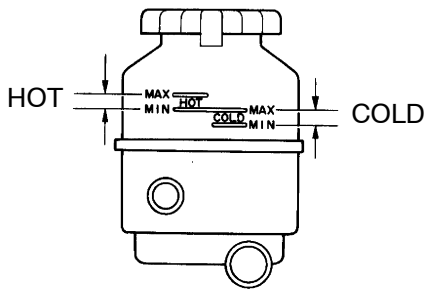
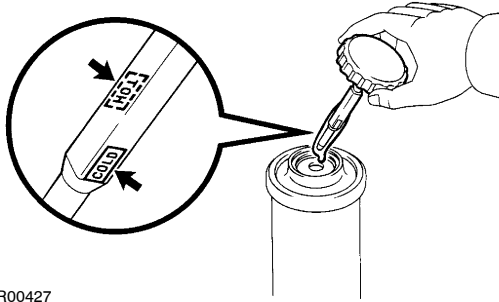


2UZ-FE:**1FZ-FE, 1HZ, 1HD-T, 1HD-FTE:**R00427
F05664

F05665

INSPECTION**1. CHECK FLUID LEVEL**

- (a) Keep the vehicle level.
- (b) With the engine stopped, check the fluid level in the oil reservoir.

If necessary, add fluid.

Fluid: ATF DEXRON[®] II or III

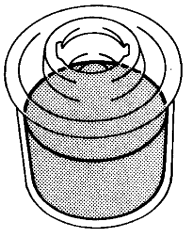
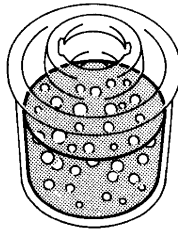
HINT:

Check that the fluid level is within the HOT LEVEL range on the reservoir/reservoir cap dipstick.

If the fluid is cold, check that it is within the COLD LEVEL range.

- (c) Start the engine and run it at idle.
- (d) Turn the steering wheel from lock to lock several times to boost fluid temperature.

Fluid temperature: 80° C (176° F)

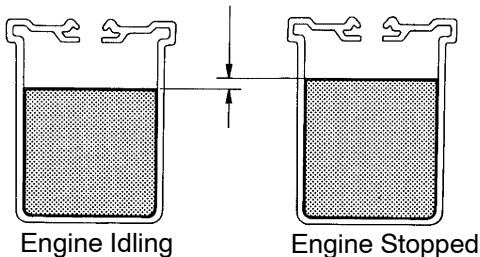
Normal**Abnormal**

R07281

- (e) Check for foaming or emulsification.

If there is foaming or emulsification, bleed power steering system. ([See page SR-4](#))

5 mm (0.20 in.) or less



R11361

- (f) With the engine idling, measure the fluid level in the oil reservoir.
- (g) Stop the engine.
- (h) Wait a few minutes and remeasure the fluid level in the oil reservoir.

Maximum fluid level rise: 5 mm (0.20 in.)

If a problem is found, bleed power steering system.

([See page SR-4](#))

- (i) Check the fluid level.

2. CHECK STEERING FLUID PRESSURE

- (a) Disconnect the pressure feed tube from the PS vane pump.

1FZ-FE: ([See page SR-41](#))

2UZ-FE Europe: ([See page SR-55](#))

2UZ-FE Except Europe: ([See page SR-65](#))

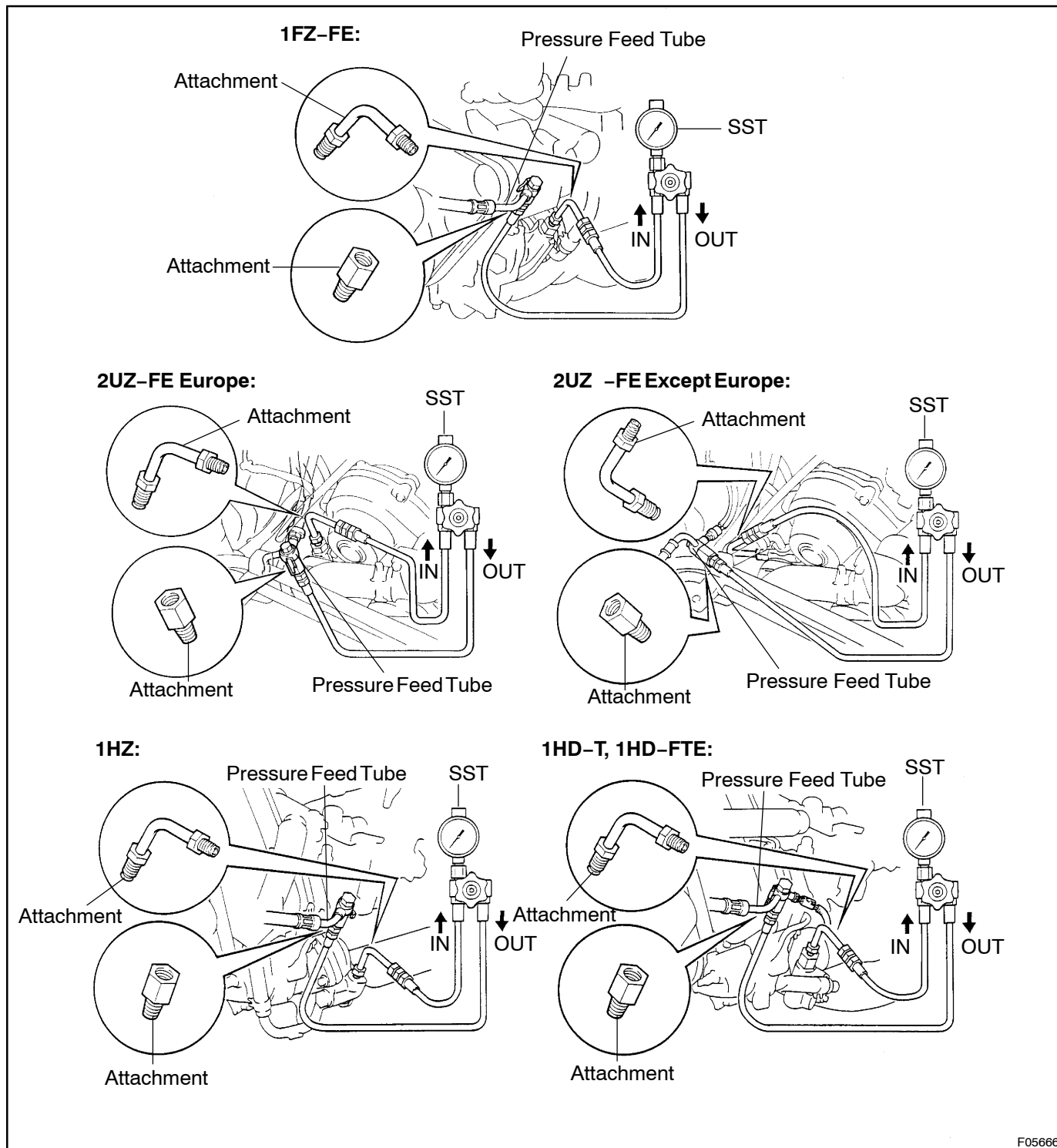
1HZ: ([See page SR-77](#))

1HD-T, 1HD-FTE: ([See page SR-89](#))

- (b) Connect SST, as shown in the illustration below.
SST 09640 -10010 (0964 1-01010, 0964 1-01030, 09641-01060)

NOTICE:

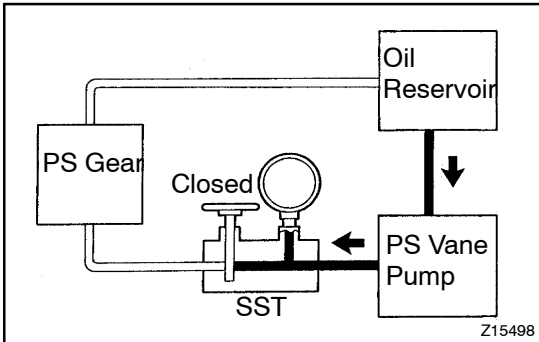
Check that the valve of the SST is in the open position.



F05666

- (c) Bleed the power steering system.
(See page SR-4)
- (d) Start the engine and run it at idle.
- (e) Turn the steering wheel from lock to lock several times to boost fluid temperature.

Fluid temperature: 80 °C (176 °F)



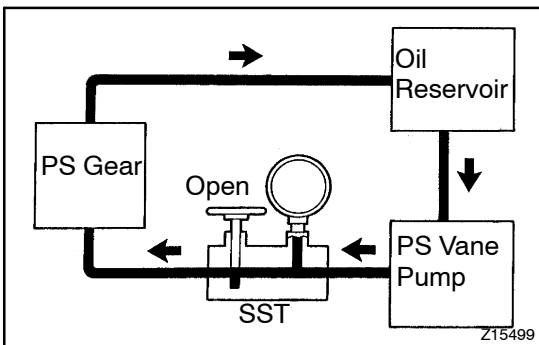
- (f) With the engine idling, close the valve of the SST and observe the reading on the SST.

Minimum fluid pressure:

8,336 kPa (85 kgf/cm², 1,209 psi)

NOTICE:

- Do not keep the valve closed for more than 10 seconds.
- Do not let the fluid temperature become too high.



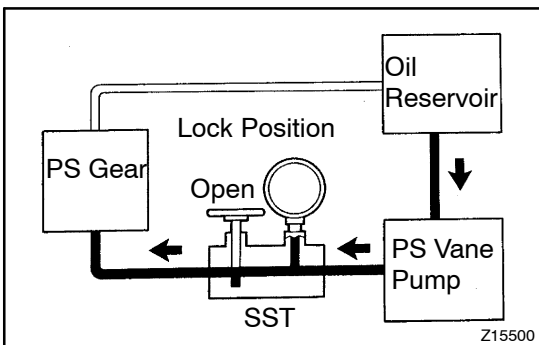
- (g) With the engine idling, open the valve fully.
- (h) Measure the fluid pressure at engine speeds of 1,000 rpm and 3,000 rpm.

Difference fluid pressure:

490 kPa (5 kgf/cm², 71 psi) or less

NOTICE:

Do not turn the steering wheel.



- (i) With the engine idling and valve fully opened, turn the steering wheel to full lock.

Minimum fluid pressure:

8,336 kPa (85 kgf/cm², 1,209 psi)

NOTICE:

- Do not maintain lock position for more than 10 seconds.
- Do not let the fluid temperature become too high.

- (j) Disconnect the SST.

- (k) Connect the pressure feed tube to the PS vane pump.

1FZ-FE: (See page SR-52)

2UZ-FE Europe: (See page SR-62)

2UZ-FE Except Europe: (See page SR-73)

1HZ: (See page SR-85)

1HD-T, 1HD-FTE: (See page SR-97)

- (l) Bleed the power steering system.

(See page SR-4)