

REMOVAL

1. w/o Airbag:

REMOVE STEERING WHEEL PAD

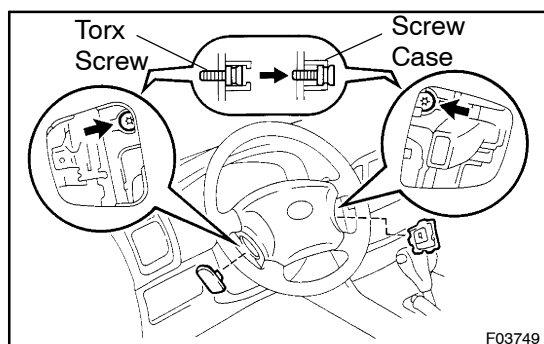
- (a) Remove the screw.
- (b) Disconnect the terminal.

2. w/ Airbag:

REMOVE STEERING WHEEL PAD

NOTICE:

- If the airbag connector is disconnected with the ignition switch at ON or ACC, DTCs will be recorded.
 - Never use airbag parts from another vehicle. When replacing parts, replace with new ones.
- (a) Place the front wheels facing straight ahead.

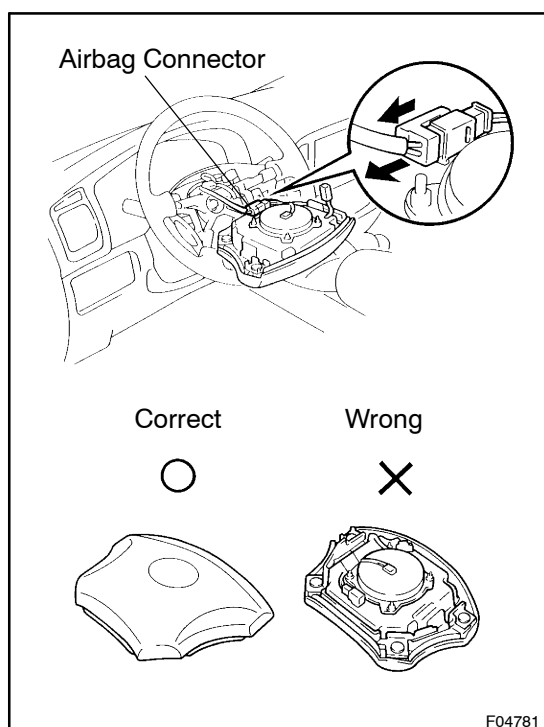


(b) Remove the steering wheel lower No.2 and No.3 covers.

(c) Using a torx socket wrench, loosen the 2 torx screws.

HINT:

Loosen the 2 screws until the groove along the screw circumference catches on the screw case.



(d) Pull out the wheel pad from the steering wheel and disconnect the airbag connector.

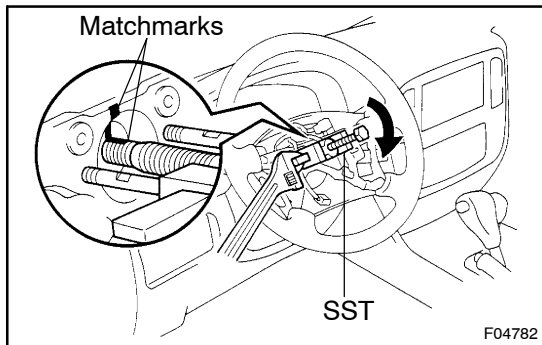
(e) Disconnect the connector.

CAUTION:

- When storing the wheel pad, keep the upper surface of the pad facing upward.
- Never disassemble the wheel pad.

NOTICE:

When removing the wheel pad, take care not to pull the airbag wire harness.

**3. REMOVE STEERING WHEEL**

- (a) w/ Airbag:
Disconnect the connector.
- (b) Remove the steering wheel set nut.
- (c) Place matchmarks on the wheel and main shaft.
- (d) Using SST, remove the wheel.
SST 09950-50010 (09951-05010, 09952-05010, 09953-05020, 09954-05020)

4. REMOVE COLUMN UPPER AND LOWER COVERS

Remove the 3 screws from the lower cover.

5. w/o Airbag:**REMOVE COMBINATION SWITCH**

- (a) Disconnect the 2 connectors.
- (b) Remove the 3 screws.

6. w/ Airbag:**REMOVE COMBINATION SWITCH WITH SPIRAL CABLE**

- (a) Disconnect the 3 connectors.
- (b) w/ Power tilt and power telescopic steering column:
Disconnect the 5 connectors.
- (c) Disconnect the airbag connector.
- (d) Remove the 3 screws.

7. w/ Airbag:**REMOVE SPIRAL CABLE**

(See page BE-23)

NOTICE:

Do not disassemble the cable or apply oil to it.

8. REMOVE SCUFF PLATE**9. REMOVE COWL TRIM**

Remove the clip.

10. REMOVE CLUSTER FINISH PANEL

Disconnect the connector.

11. REMOVE LOWER NO. 1 PANEL

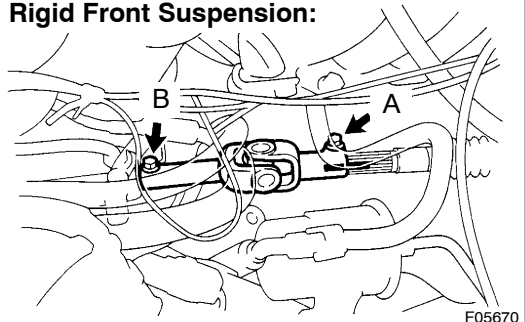
- (a) Remove the 2 screws and disconnect the hood lock release lever from the panel.
- (b) Remove the 2 screws and disconnect the fuel lid release lever from the panel.
- (c) Remove the pad set screw.
- (d) Disconnect the connector.

12. REMOVE NO.2 HEATER TO REGISTER DUCT

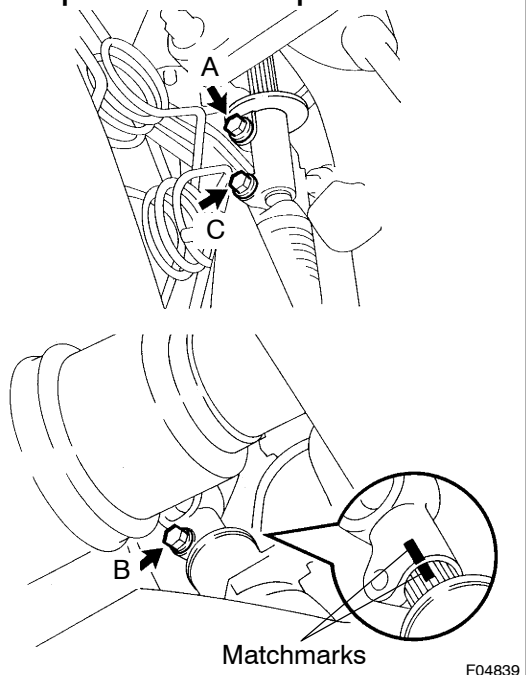
Remove the screw.

13. Rigid Front Suspension:**REMOVE JOINT COVER**

Remove the 2 bolts.

Rigid Front Suspension:**14. Rigid Front Suspension:****DISCONNECT SLIDING YOKE**

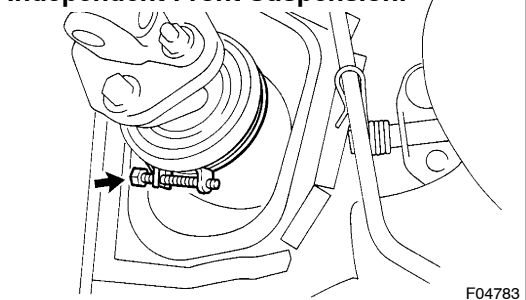
- (a) Place matchmarks on the yoke and worm gear valve shaft.
- (b) Loosen the bolt A.
- (c) Remove the bolt B.

Independent Front Suspension:**15. Independent Front Suspension:****DISCONNECT NO.2 INTERMEDIATE SHAFT ASSEMBLY**

- (a) Place matchmarks on the intermediate shaft and control valve shaft.
- (b) Loosen the bolt A and C.
- (c) Remove the bolt B.

16. DISCONNECT HOLE COVER

- (a) Remove the 4 bolts.

Independent Front Suspension:

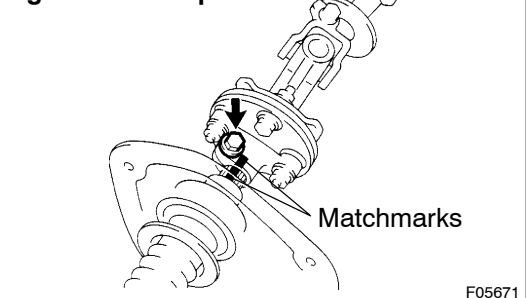
- (b) Independent Front Suspension:
Loosen the hose clamp.

17. REMOVE STEERING COLUMN ASSEMBLY

- (a) Disconnect the connector.
- (b) Remove the 4 column assembly set nuts.

18. Rigid Front Suspension:**REMOVE SLIDING YOKE**

Remove the bolt A.

Rigid Front Suspension:**19. Rigid Front Suspension:****REMOVE INTERMEDIATE SHAFT ASSEMBLY AND HOLE COVER**

- (a) Place matchmarks on the intermediate shaft and universal joint.
- (b) Remove the bolt.

20. Independent Front Suspension:**REMOVE NO.2 INTERMEDIATE SHAFT ASSEMBLY**

Remove the bolt C.

21. Independent Front Suspension:**REMOVE SLIDING YOKE**

(a) Remove the bolt A.

(b) Remove the thrust stopper.

22. Independent Front Suspension:**REMOVE HOLE COVER, HOSE CLAMP AND NO.2
HOLE COVER FROM COLUMN ASSEMBLY**