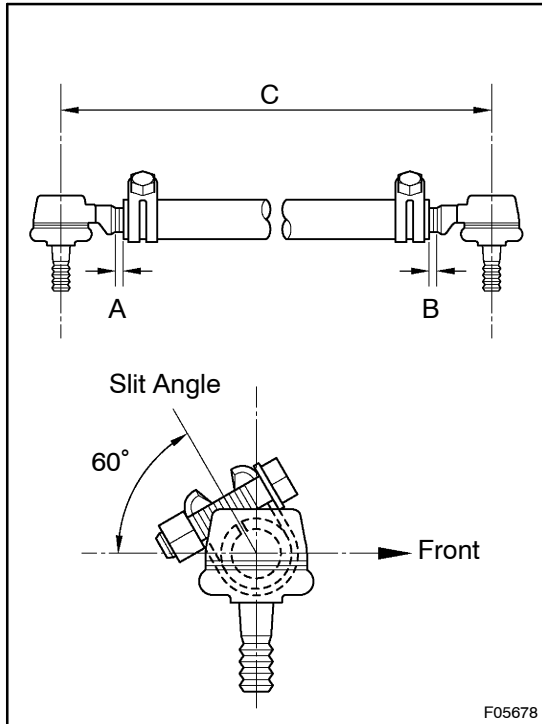


INSTALLATION

HINT:

When connecting the ball stud to the arm or rod, remove the grease on the joint surfaces.



1. INSTALL LH AND RH TIE ROD ENDS

- Install the LH and RH tie rod ends while facing the ball joint, slit of the tie rod and clamp to the angle shown in the illustration, and the length A and B should be equal and that of C should be approximately 1,207 mm (47.51 in.).
- Temporarily tighten the 2 clamp set bolts and nuts.

NOTICE:

Install the tie rod assembly to the vehicle and adjust toe-in. After that, torque the 2 clamp set bolts and nuts securely.

2. INSTALL TIE ROD ASSEMBLY

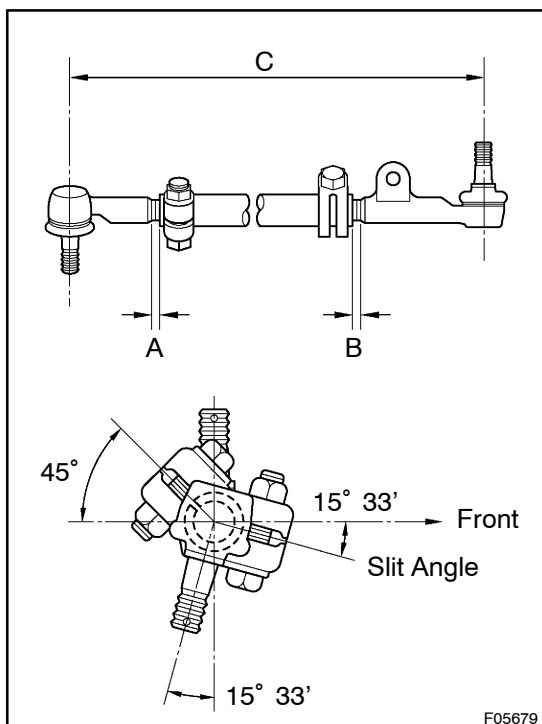
- Connect the tie rod assembly to the knuckle arm.
- Torque the 2 nuts and install the 2 new cotter pins.

Torque: 9 1 N·m (925 kgf·cm, 67 ft·lbf)

- After adjusting toe -in, torque the 2 clamp set bolts and nuts.

(See page SA-7)

Torque: 37 N·m (375 kgf·cm, 27 ft·lbf)



3. INSTALL LH AND RH RELAY ROD ENDS

- Install the LH and RH relay rod ends while facing the ball joint, slit of the tie rod and clamp to the angle shown in the illustration, and the length A and B should be equal and that of C should be approximately 1,076 mm (42.34 in.).
- Torque the 2 clamp set bolts and nuts.

Torque: 37 N·m (375 kgf·cm, 27 ft·lbf)

4. INSTALL RELAY ROD ASSEMBLY

- (a) Connect the relay rod assembly to the knuckle arm.
- (b) Torque the nut and install a new cotter pin.

Torque: 91 N·m (925 kgf·cm, 67 ft·lbf)

5. INSTALL STEERING DAMPER ASSEMBLY

- (a) Connect the damper assembly to the damper bracket and torque the nut.

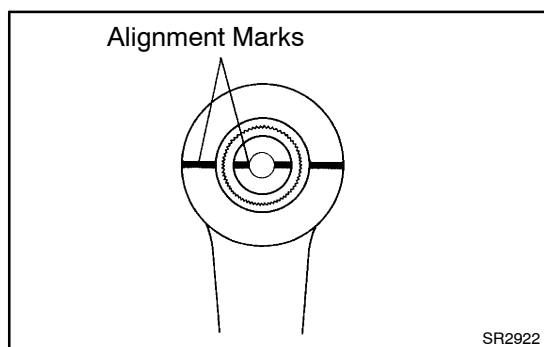
Torque: 74 N·m (750 kgf·cm, 54 ft·lbf)

- (b) Install the damper assembly with the damper bracket and torque the 2 bolts.

Torque: 39 N·m (400 kgf·cm, 29 ft·lbf)

- (c) Connect the damper assembly to the relay rod assembly and torque the nut.

Torque: 74 N·m (750 kgf·cm, 54 ft·lbf)

**6. INSTALL PITMAN ARM**

- (a) Align the alignment marks on the pitman arm and sector shaft.

- (b) Install the spring washer and torque the nut.

Torque: 177 N·m (1,800 kgf·cm, 130 ft·lbf)

- (c) Connect the pitman arm to the relay rod assembly.

- (d) Torque the nut and install a new cotter pin.

Torque: 91 N·m (925 kgf·cm, 67 ft·lbf)

7. CHECK FRONT WHEEL ALIGNMENT

(See page SA-7)