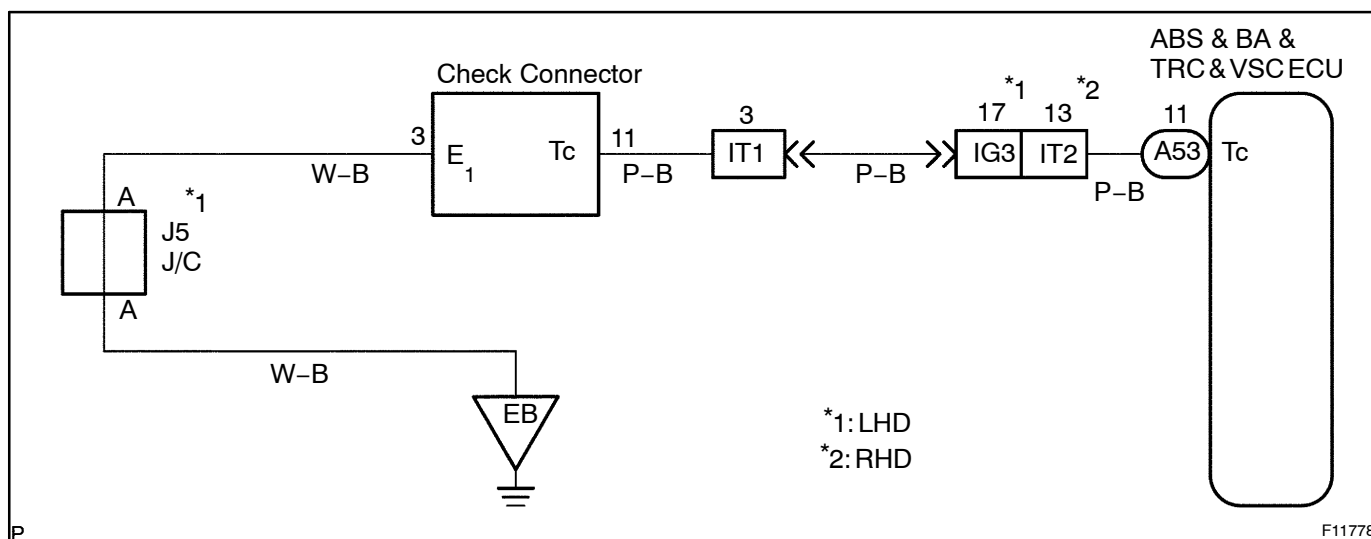


Tc Terminal Circuit

CIRCUIT DESCRIPTION

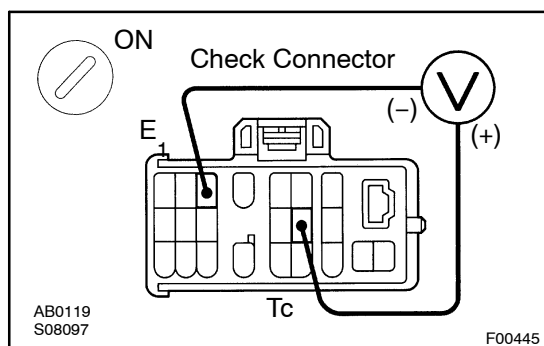
Connecting terminals Tc and E₁ of the check connector causes the ECU to display the DTC by flashing the ABS warning light and VSC TRC warning light.

WIRING DIAGRAM



INSPECTION PROCEDURE

- 1 Check voltage between terminals Tc and E₁ of check connector.



CHECK:

- Turn ignition switch ON.
- Measure voltage between terminals Tc and E₁ of check connector.

OK:

Voltage: 10 – 14 V

OK

If ABS warning light does not blink even after Tc and E₁ have been connected, the ECU may be defective.

NG

- | | |
|---|--|
| 2 | IG switch OFF, and check for open and short circuit in harness and connector between ABS & BA & TRC & VSC ECU and check connector, check connector and body ground (See page IN-35). |
|---|--|

NG

Repair or replace harness or connector.

OK

Check and replace ABS & BA & TRC & VSC ECU.