

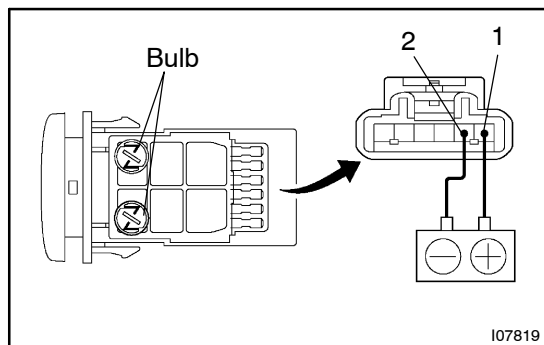
IDLE-UP SWITCH (1HZ, 1HD-T, 1HD-FTE)

INSPECTION

AC1UT-02

1. REMOVE IDLE -UP SWITCH

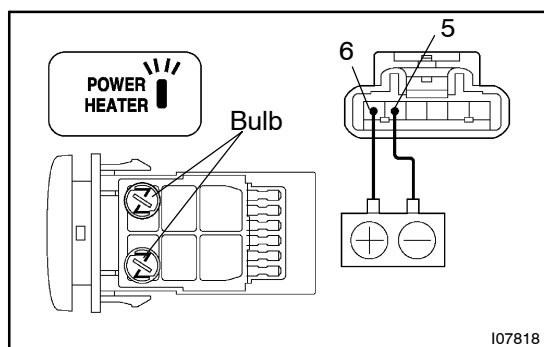
Using a screwdriver, pullout the switch then disconnect the connector.



2. INSPECT IDLE -UP SWITCH

- (a) Inspect the illumination operation.
Connect the positive (+) lead from the battery to terminal 1 and negative (-) lead to terminal 2 then check that the illumination lights up.

If operation is not as specified, check the bulb.

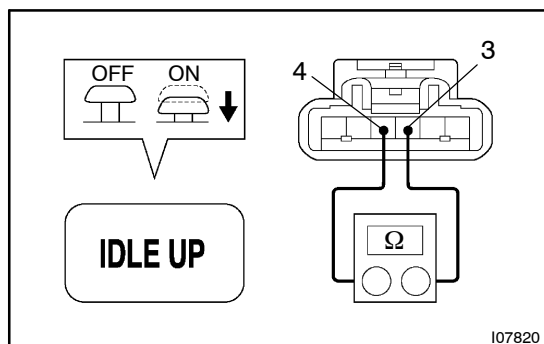


- (b) 1HD -FTE Engine w/Viscous Heater:

Inspect power heater indicator operation.

Connect the positive (+) lead from the battery to terminal 6 and negative (-) lead to terminal 5 then check that the indicator lights up.

If operation is not as specified, check the bulb.



- (c) Inspect the idle -up switch continuity.

Check the continuity exists between terminals 3 and 4.

If no continuity exists, replace the switch.

3. INSTALL IDLE -UP SWITCH