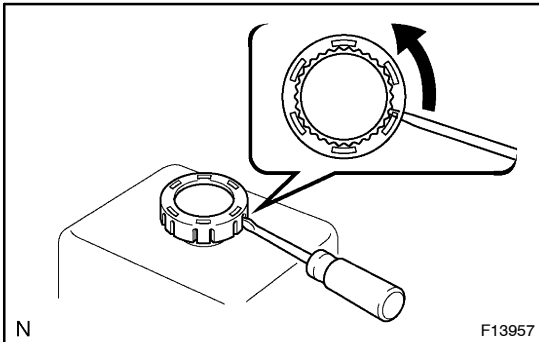


DISASSEMBLY

1. REMOVE RESERVOIR

- (a) Remove the 2 bolts and pull out the reservoir.



- (b) Insert the flat –head screwdriver into the slit of the cover to the extent that it reaches the reservoir cap.

Turn the cap and the cover together.

Remove the cover and the cap.

- (c) Remove the cover from the cap.

- (d) Remove the strainer and grommet from the reservoir.

2. REMOVE RESERVOIR BRACKET

- (a) Remove the 2 bolts and reservoir bracket from the housing.

- (b) Remove the 3 cushions from the reservoir bracket.

3. REMOVE FLUID PRESSURE SENSOR

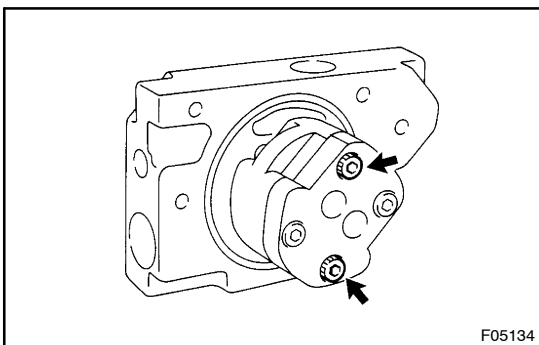
Remove the fluid pressure sensor from the housing.

4. REMOVE FLUID TEMPERATURE SENSOR

Remove the fluid temperature sensor from the housing.

5. REMOVE PUMP COVER

Remove the 3 bolts, pump cover and O –ring.



6. REMOVE PUMP SUB –ASSEMBLY

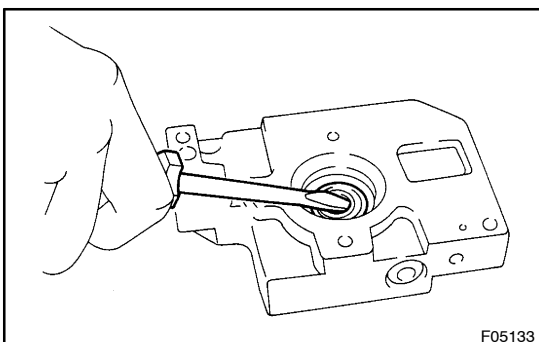
- (a) Using a hexagon wrench, remove the 2 bolts and pump sub-assembly.

- (b) Remove the O –ring.

7. REMOVE PUMP MOTOR

Remove the 2 bolts and pump motor from the housing.

8. REMOVE MOTOR JOINT



9. REMOVE OIL SEAL

Using a screwdriver, remove the oil seal.

NOTICE:

Be careful not to damage the housing.