

## REASSEMBLY

### 1. INSTALL OIL SEAL

Using SST and a hammer, install a new oil seal.

SST 09950 –60010 (0995 1–00310),  
09950–70010 (0995 1–07100)

### 2. INSTALL PUMP MOTOR

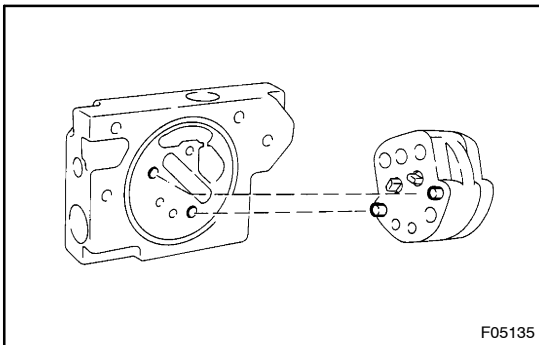
Install the pump motor with 2 bolts.

**Torque: 5.2 N·m (53 kgf·cm, 46 in·lbf)**

### 3. INSTALL MOTOR JOINT

### 4. INSTALL PUMP SUB –ASSEMBLY

(a) Install a new O –ring to the housing.



(b) Align the pin of pump sub –assembly and housing.

#### NOTICE:

**Be careful not so that the shaft portion does not interfere with other portions.**

(c) Using a hexagon wrench, install the 2 bolts.

**Torque: 5.6 N·m (58 kgf·cm, 50 in·lbf)**

### 5. INSTALL PUMP COVER

Install a new O –ring and the pump cover with 3 bolts.

**Torque: 12 N·m ( 120 kgf·cm, 8 ft·lbf)**

### 6. INSTALL FLUID TEMPERATURE SENSOR

Install the fluid temperature sensor to the pump cover.

**Torque: 22 N·m (220 kgf·cm, 16 ft·lbf)**

### 7. INSTALL FLUID PRESSURE SENSOR

Install the fluid pressure sensor to the housing.

**Torque: 44 N·m (450 kgf·cm, 33 ft·lbf)**

### 8. INSTALL RESERVOIR BRACKET

(a) Install the 3 cushions to the reservoir bracket.

(b) Install the reservoir bracket with the 2 bolts to the housing.

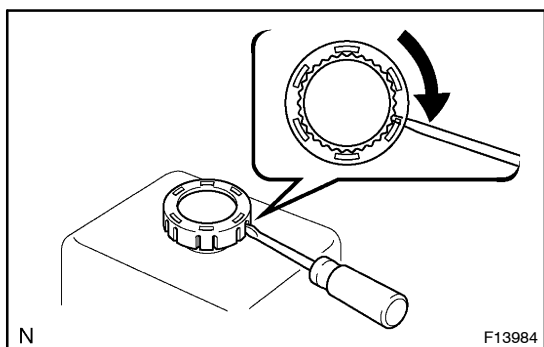
**Torque: 12 N·m ( 120 kgf·cm, 8 ft·lbf)**

### 9. INSTALL RESERVOIR

(a) Install a new grommet to the reservoir.

(b) Install the strainer.

(c) Instal the cover to the cap.



- (d) Insert the flat –head screwdriver into the slit of the cover to the extent that it reaches the reservoir cap.  
Turn the cap and the cover together to install them.
- (e) Install the reservoir with 2 bolts.

**Torque: 6.9 N·m (70 kgf·cm, 6 1 in.·lbf)**