

REMOVAL

1. REMOVE FRONT DOOR SCUFF PLATES

2. REMOVE COWL SIDE TRIMS

3. REMOVE FRONT DOOR OPENING TRIMS

4. REMOVE FRONT PILLAR GARNISH

(a) Driver's side:

Using a screwdriver, remove the 2 assist grip plugs, then remove the 2 screws and assist grip.

HINT:

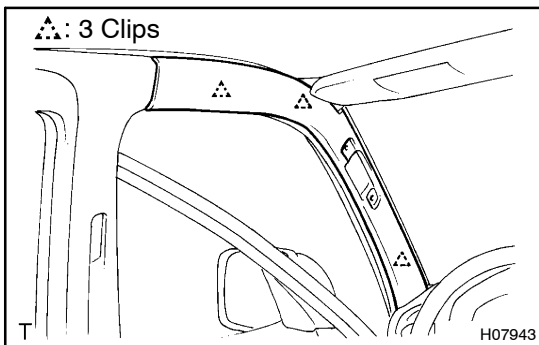
Tape the screwdriver tip before use.

(b) Passenger's side:

Using a screwdriver, remove the 4 assist grip plugs, then remove the 4 screws and 2 assist grips.

HINT:

Tape the screwdriver tip before use.



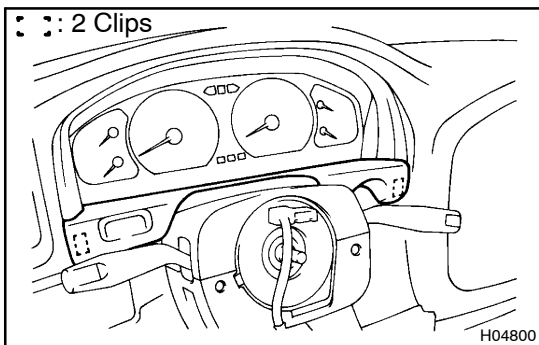
(c) Using a screwdriver, remove the front pillar garnish.

HINT:

Tape the screwdriver tip before use.

(d) Use the same manner described above to the other side.

5. REMOVE STEERING WHEEL (See Pub. No. RM6 16E on page SR -13 or SR-29)



6. REMOVE CLUSTER FINISH PANEL

Using a screwdriver, remove the cluster finish panel.

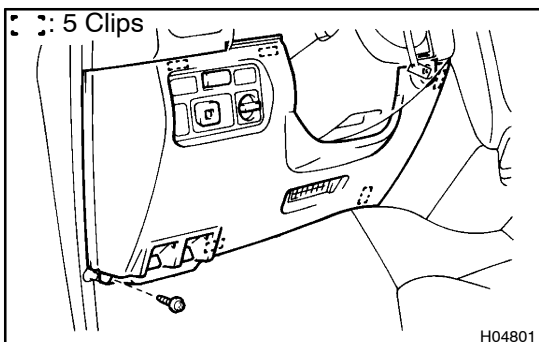
HINT:

Tape the screwdriver tip before use.

7. REMOVE HOOD LOCK AND FUEL LID CONTROL CABLE LEVER

(a) Remove the 2 screws and hood lock control cable.

(b) Remove the 2 screws and fuel lid control cable lever.



8. REMOVE LOWER NO. 1 PANEL

(a) Remove the screw.

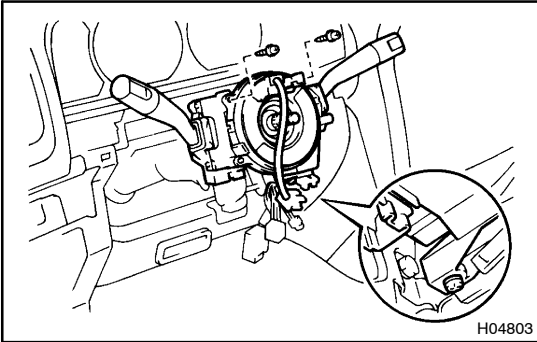
(b) Using a screwdriver, remove the lower No. 1 panel, then disconnect the connectors.

HINT:

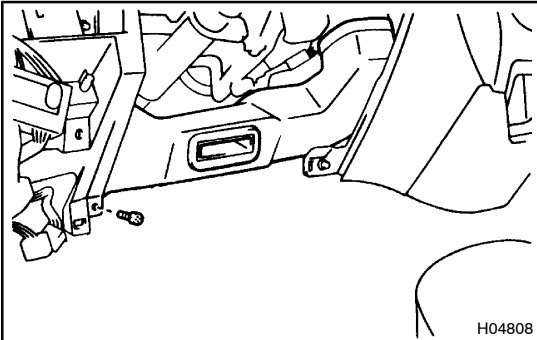
Tape the screwdriver tip before use.

9. REMOVE COLUMN COVERS

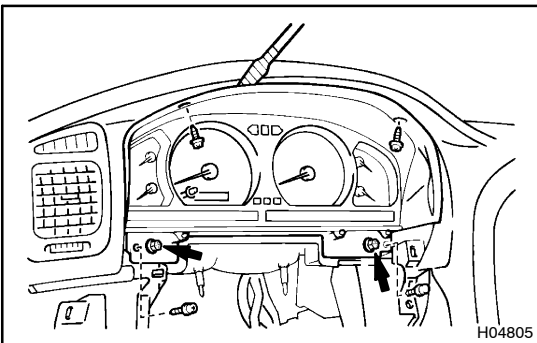
Remove the 3 screws and column covers.

**10. REMOVE COMBINATION SWITCH**

- (a) Disconnect the connectors.
- (b) Remove the clamp.
- (c) Remove the 3 screws and combination switch.

**11. REMOVE NO. 2 HEATER TO REGISTER DUCT**

Remove the screw and No. 2 heater to register duct as shown in the illustration.

12. REMOVE STEERING COLUMN (See Pub. No. RM6 16E on page SR -13 or SR-29)**13. REMOVE COMBINATION METER**

- (a) Disconnect the connectors.

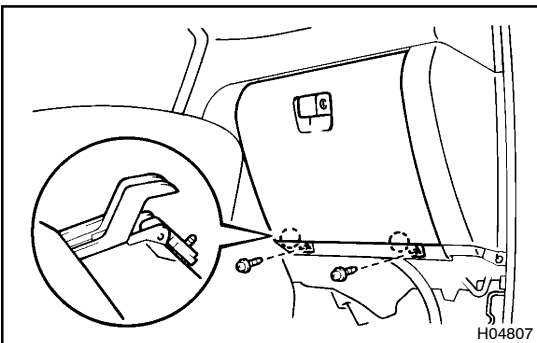
HINT:

The connectors can be disconnected by loosening the bolts.

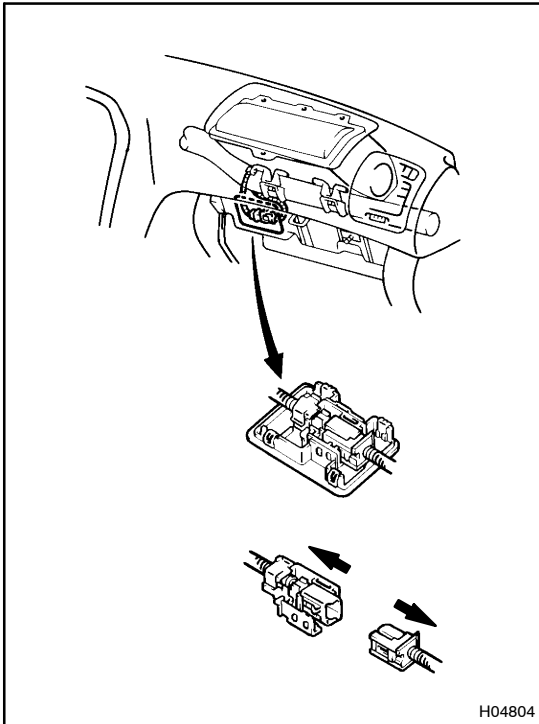
- (b) Remove the 4 screws.
- (c) Using a screwdriver, remove the combination meter.

HINT:

Tape the screwdriver tip before use.

**14. REMOVE GLOVE COMPARTMENT DOOR**

- (a) Remove the 2 screws.
- (b) Remove the glove compartment door, then disconnect the glove compartment door damper clip.



15. DISCONNECT AIRBAG CONNECTOR (See Pub. No. RM616E on page RS -25)

- (a) Using a screwdriver, remove the No. 1 under cover.

HINT:

Tape the screwdriver tip before use.

- (b) Pull up the airbag connector from the No. 1 under cover.

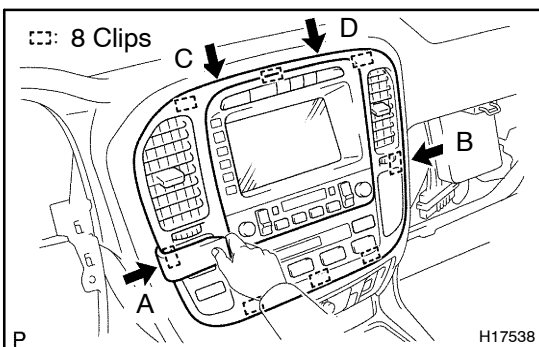
- (c) Disconnect the airbag connector.

NOTICE:

When handling the airbag connector, take care not to damage the airbag wire harness.

16. REMOVE LOWER NO. 2 PANEL

Remove the 3 screws and lower No. 2 panel.



17. REMOVE CENTER CLUSTER

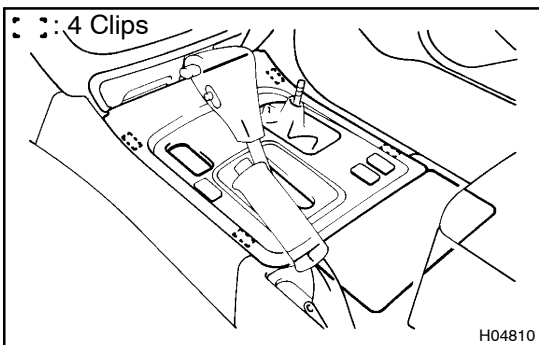
- (a) Using a moulding remover, remove the center cluster in order "A", "B", "C" and "D" as shown in the illustration.

- (b) Disconnect the connectors.

18. REMOVE NAVIGATION SYSTEM WITH A/C CONTROL ASSEMBLY

- (a) Remove the 4 screws.

- (b) Disconnect the connectors, then remove the navigation system with A/C control assembly.



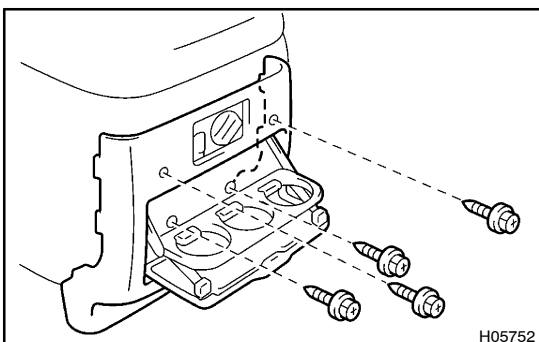
19. REMOVE REAR CONSOLE PANEL

- (a) Remove the transfer shift lever knob.

- (b) Using a screwdriver, remove the rear console panel.

HINT:

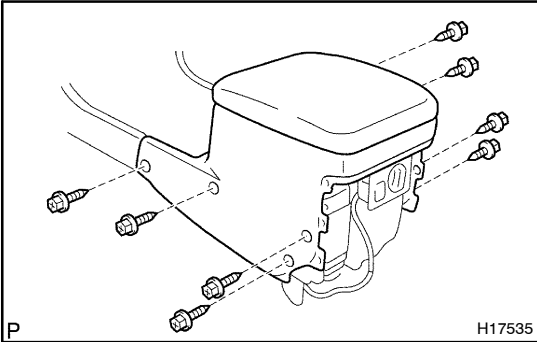
Tape the screwdriver tip before use.



20. REMOVE CONSOLE REAR END PANEL

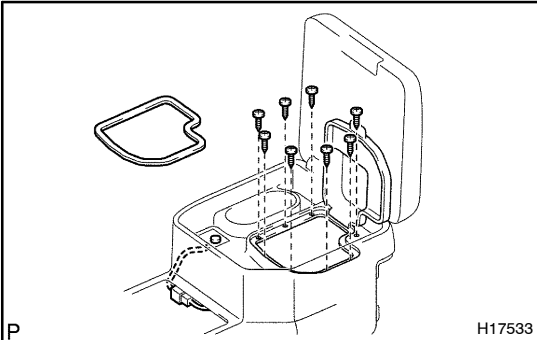
- (a) Remove the 4 screws.

- (b) Using a screwdriver, remove the console rear end panel.

**21. REMOVE REAR CONSOLE BOX**

(a) w/ Cool box:

Remove the 8 screws.

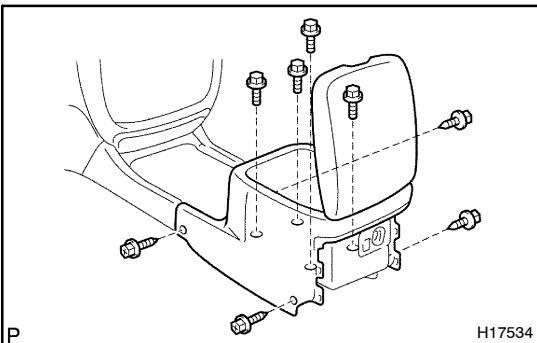


(b) w/ Cool box:

Disconnect the connector.

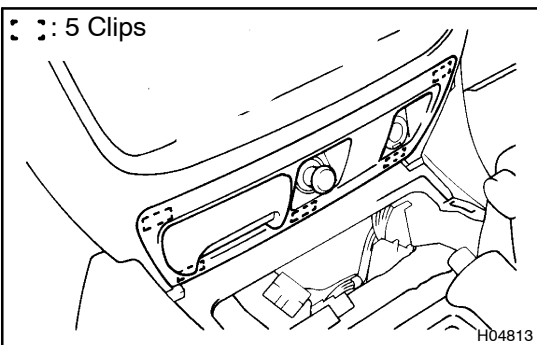
(c) w/ Cool box:

Remove the door packing, 8 screws and rear console box.



(d) w/o Cool box:

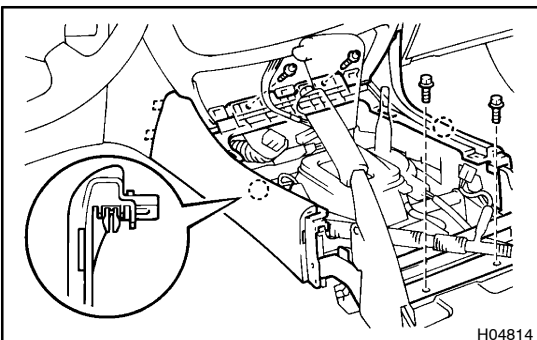
Remove the 4 bolts, 4 screws and rear console box.

**22. REMOVE CENTER LOWER CLUSTER FINISH PANEL**

Using a screwdriver, remove the center lower cluster finish panel, then disconnect the connector.

HINT:

Tape the screwdriver tip before use.

**23. REMOVE FRONT CONSOLE BOX**

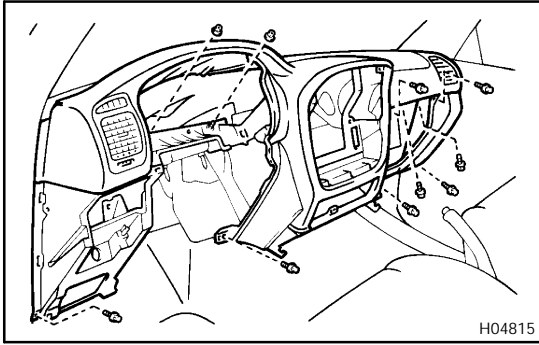
Remove the 2 bolts, 2 screws and front console box.

24. REMOVE INSTRUMENT PANEL

(a) Disconnect the junction connectors.

HINT:

The connectors can be disconnected by loosening the bolts.



- (b) Disconnect the connector, then remove the 8 bolts, 2 nuts and instrument panel.
25. REMOVE ECU
 26. REMOVE NO. 3 HEATER TO REGISTER DUCT
 27. REMOVE NO. 4 HEATER TO REGISTER DUCT
 28. REMOVE GLOVE COMPARTMENT DOOR DAMPER
 29. REMOVE FLOOR BRACE
 30. REMOVE NO. 1 BRACE
 31. REMOVE REINFORCEMENT