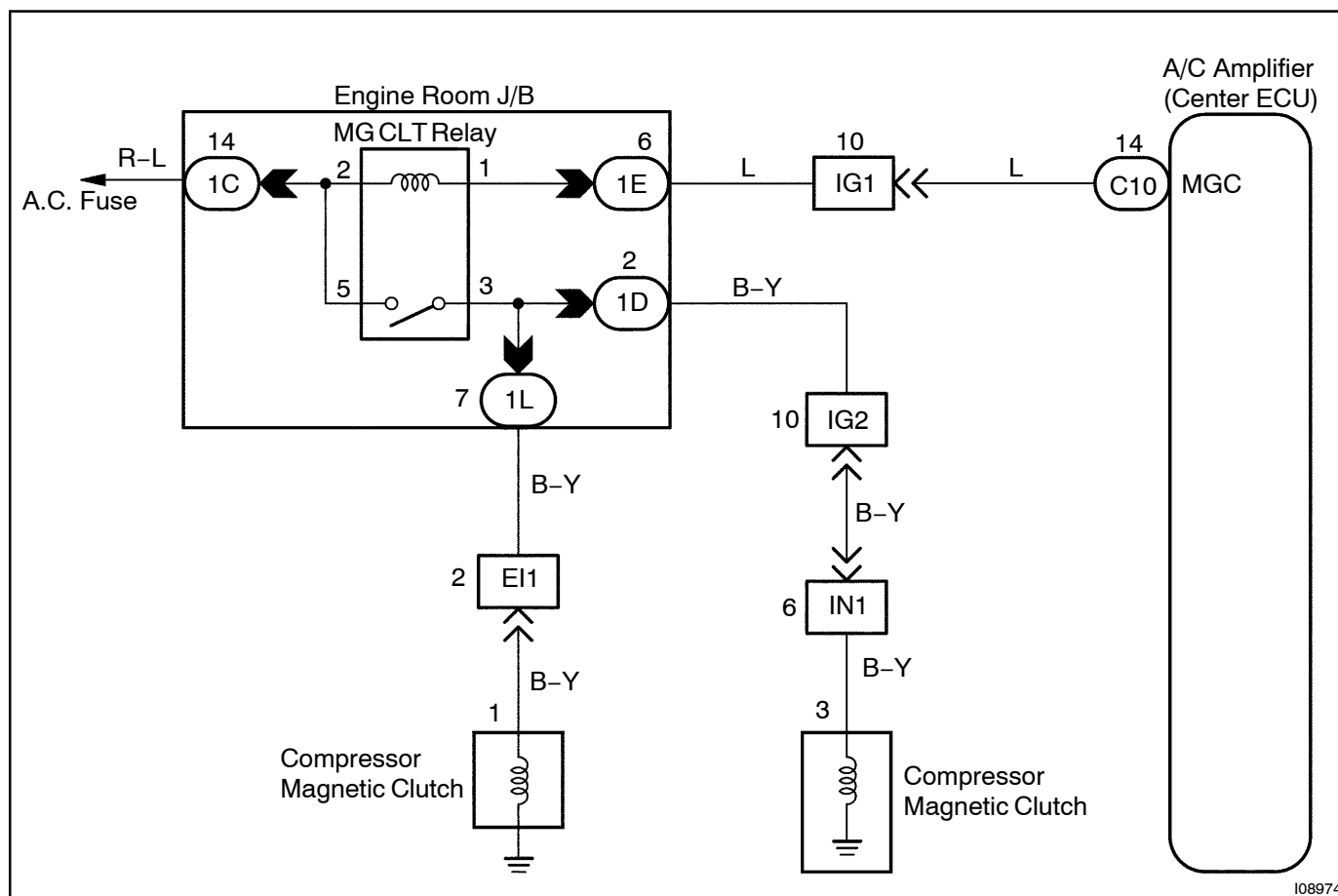


## CIRCUIT DESCRIPTION

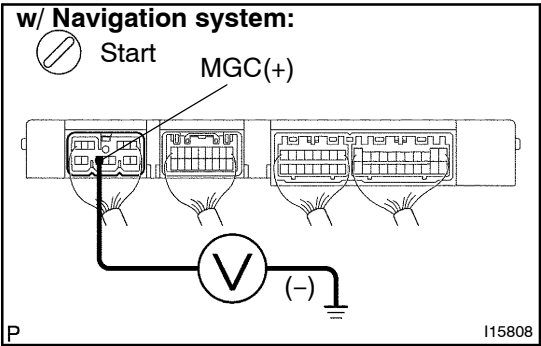
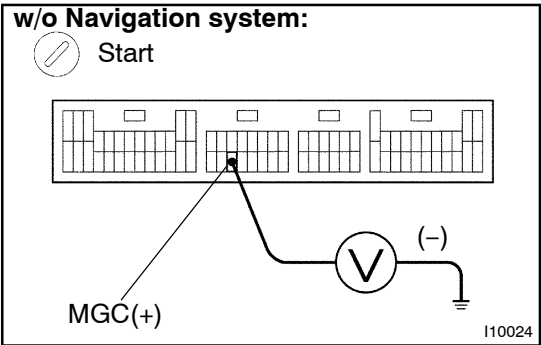
## WIRING DIAGRAM



INSPECTION PROCEDURE

1

Check voltage between terminal MGC of A/C amplifier connector.



- CHECK:**
- (a) Start engine.
  - (b) Push AUTO SW.
  - (c) Measure voltage between terminal MCG of A/C amplifier connector and body ground when A/C switch is ON and OFF.

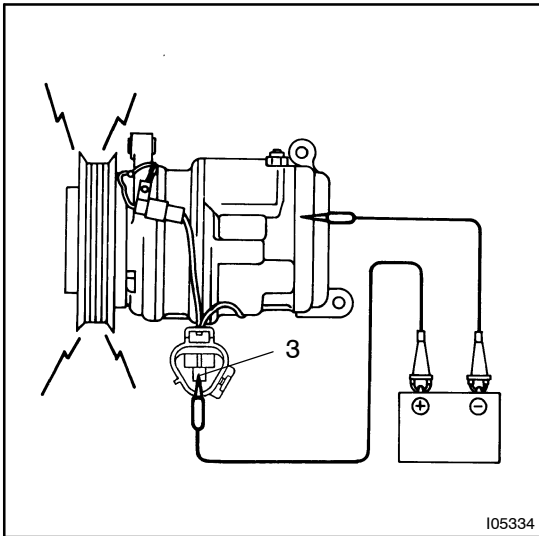
**OK:**

A/C switch	Voltage
ON	0 V
OFF	10 - 14 V

OK

Check and replace A/C amplifier.

NG

**2 Check A/C compressor magnetic clutch.****PREPARATION:**

Disconnect magnetic clutch connector.

**CHECK:**

Connect positive (+) lead connected to battery to magnetic clutch connector terminal 3.

**OK:**

**Magnetic clutch is energized.**

**NG****Repair A/C compressor magnetic clutch.****OK****3 Check harness and connector between A/C compressor and MC CLT relay (See [page IN-34](#)).****NG****Repair or replace harness or connector.****OK****Check and replace A/C amplifier.**