

# MULTI DISPLAY

## TROUBLESHOOTING

BE2E1-02

### HINT:

- Troubleshoot the Multi Display according to the table below.
- w/ Navigation System ([See PageDI-1140](#))

Troubleshooting	No.
Multi display does not operate.	1
Clock loses or gains time.	2
Drive monitor function malfunction.	3
Outer temperature display malfunction.	4
Security indicator does not light up.	( <a href="#">See page DI-825</a> )

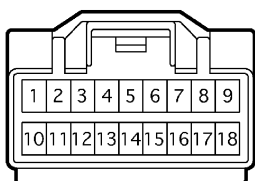
± 1.5 seconds/day

### 1. TROUBLESHOOTING NO.1

1	MULTI DISPLAY DOES NOT OPERATE
---	--------------------------------

#### Multi Display Assembly

IG	11	ECU-IG Fuse
ACC	10	ACC Fuse
+B	9	ECU-B1 Fuse
TC	3	Body Control ECU
A/C TEMP	16	A/C Contlr Assy
GND	8	Ground
UART+	1	Combination Meter
UART-	2	Combination Meter
SECURITY	14	Body Control ECU and Transponder ECU



(a) Check that the battery positive voltage is 10 – 16 V.

If voltage is not as specified, replace the battery.

(b) Check that the ECU –IG, ECU –B and ACC fuses are not blown.

If the fuse is blown, replace the fuse and check for short.

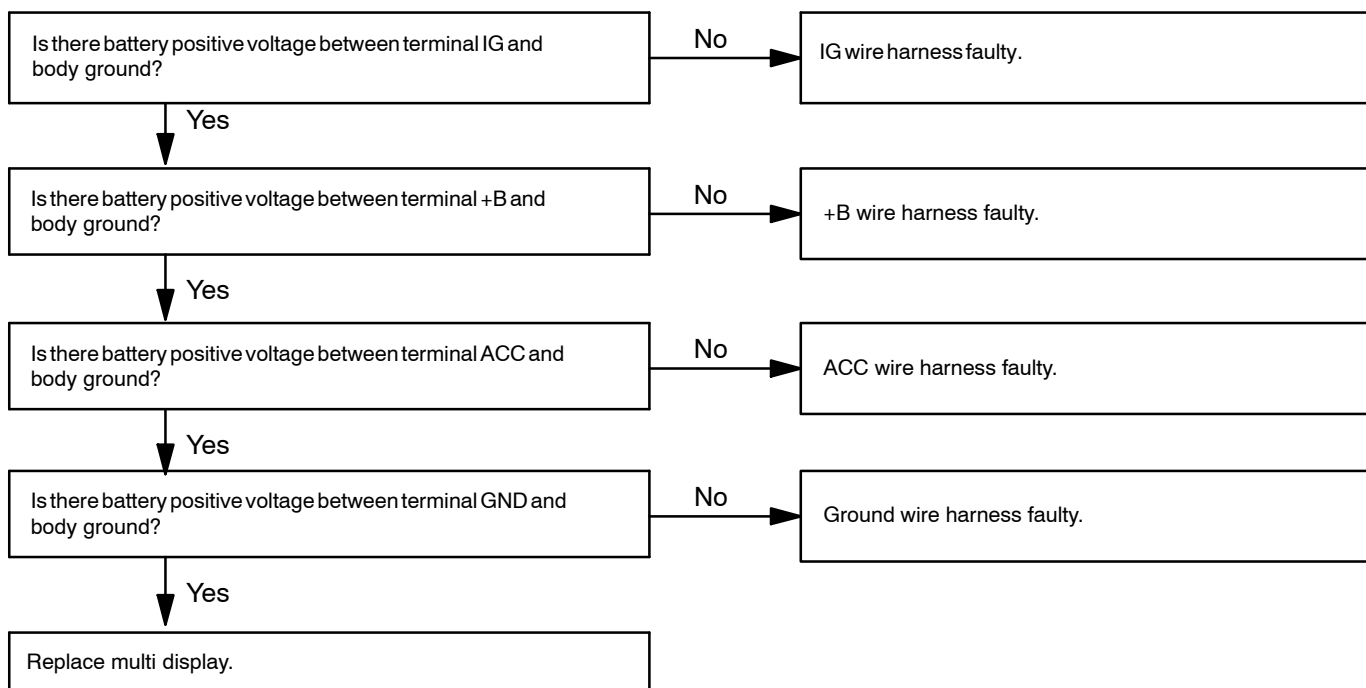
(c) Troubleshoot the multi display as follows.

#### HINT:

Inspect the connector on the wire harness side.

H

I25794



## 2. TROUBLESHOOTING NO.2

2	CLOCK LOSES OR GAINS TIME
---	---------------------------

(a) Check that the battery positive voltage is 10 – 16V.

If voltage is not as specified, replace the battery.

(b) Inspect the error of the clock.

**Allowable error (per day):  $\pm 1.5$  seconds**

If the error exceeds the allowable error, replace the multi display.

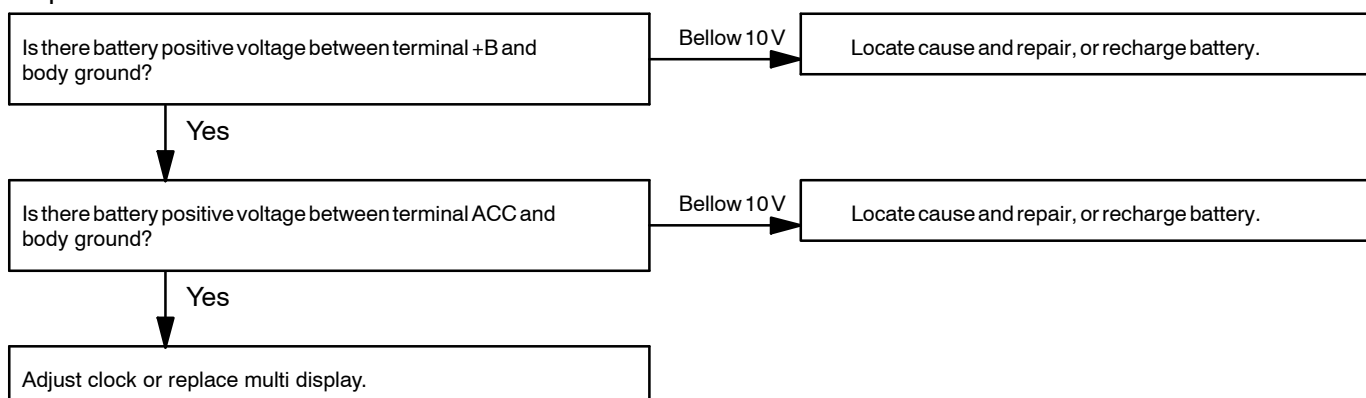
(c) Check that the clock adjusting button is sticking in position and has failed to return.

If the error exceeds the allowable error, replace the multi display.

(d) Troubleshoot the clock as follows.

HINT:

Inspect the connector on the wire harness side.



**3. TROUBLESHOOTING NO.3****3 DRIVE MONITOR FUNCTION MALFUNCTION**

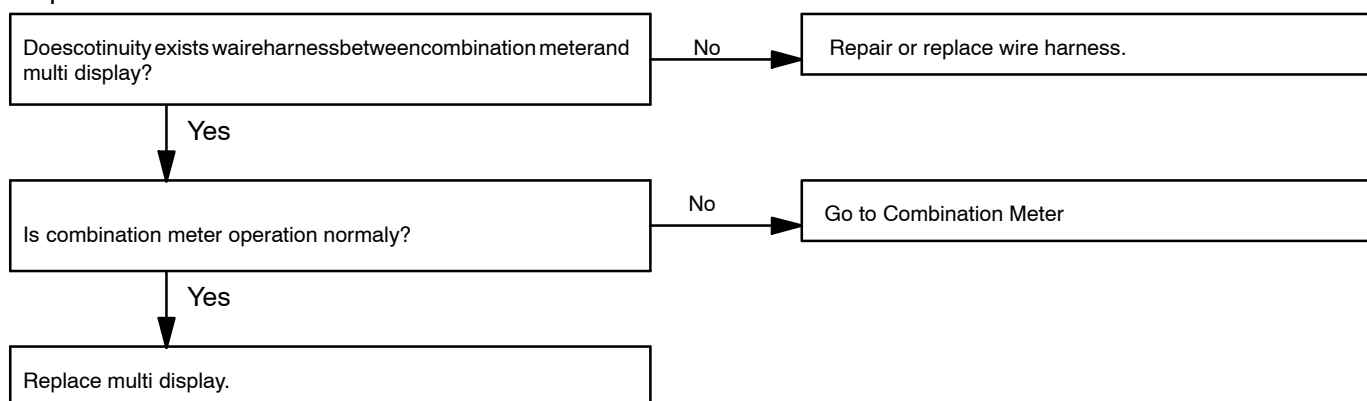
(a) Check that the battery positive voltage is 10 – 16 V.

If voltage is not as specified, replace the battery.

(b) Troubleshoot the drive monitor function as follows.

HINT:

Inspect the connector on the wire harness side.

**4. TROUBLESHOOTING NO.4****4 OUTER TEMPERATURE DISPLAY MALFUNCTION**

(a) Check that the battery positive voltage is 10 – 16 V.

If voltage is not as specified, replace the battery.

(b) Troubleshoot the outer temperature display as follows.

HINT:

Inspect the connector on the wire harness side.

