

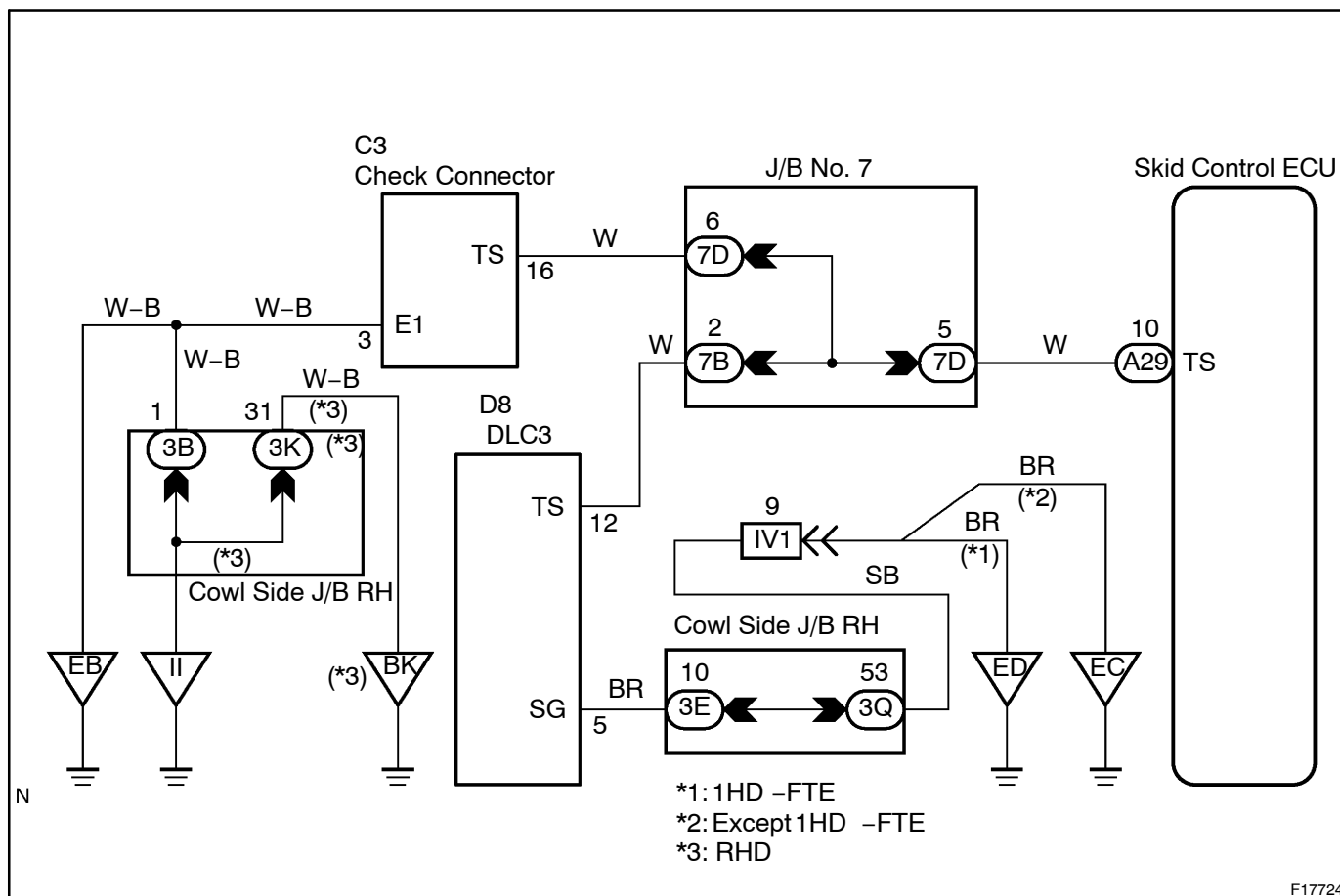
Ts Terminal Circuit

CIRCUIT DESCRIPTION

The sensor check circuit detects abnormalities in the speed sensor signal which cannot be detected by the DTC check.

Connecting terminals Ts and E₁ of the check connector or Tc starts the check.

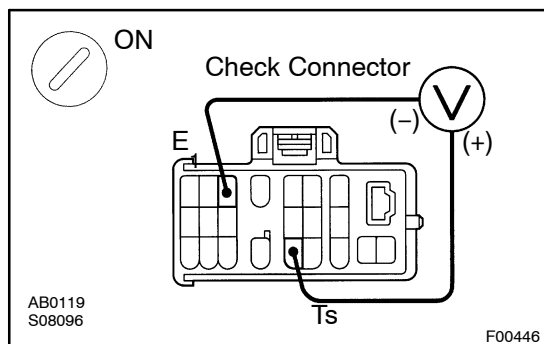
WIRING DIAGRAM



F17724

INSPECTION PROCEDURE

- | | |
|----------|---|
| 1 | Check voltage between terminals Ts and E₁ of check connector. |
|----------|---|

**CHECK:**

- (a) Turn the ignition switch ON.
- (b) Measure voltage between terminals Ts and E₁ of check connector.

OK:**Voltage: 10 – 14 V****OK****If ABS warning light does not blink even after Ts and E₁ have been connected, the ECU may be defective.****NG**

- | | |
|----------|---|
| 2 | IG switch OFF, and check for open and short circuit in harness and connector between skid control ECU and check connector, check connector and body ground (See page IN-38). |
|----------|---|

NG**Repair or replace harness or connector.****OK****Check and replace skid control ECU.**