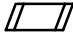


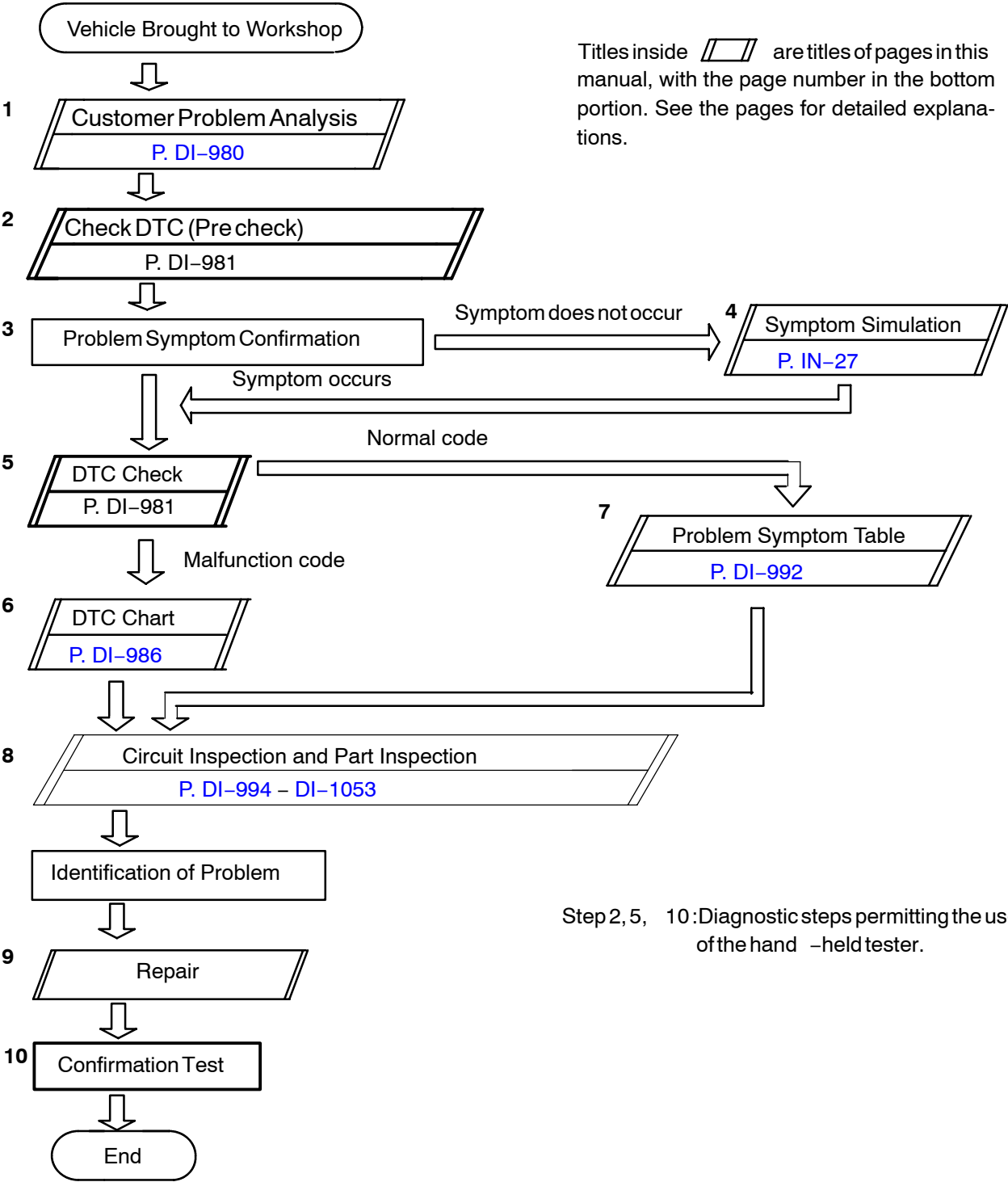
BODY CONTROL SYSTEM

HOW TO PROCEED WITH TROUBLESHOOTING

DIAXV-01

HINT:
This ECU is connected to the multiplex communication system. Therefore, be sure to check that there is no troubles in the multiplex communication system before performing the troubleshooting.

Titles inside  are titles of pages in this manual, with the page number in the bottom portion. See the pages for detailed explanations.



Step 2, 5, 10: Diagnostic steps permitting the use of the hand-held tester.