

CIRCUIT INSPECTION

| | | |
|------------|---------------|---|
| DTC | B 1244 | Light sensor circuit malfunction |
|------------|---------------|---|

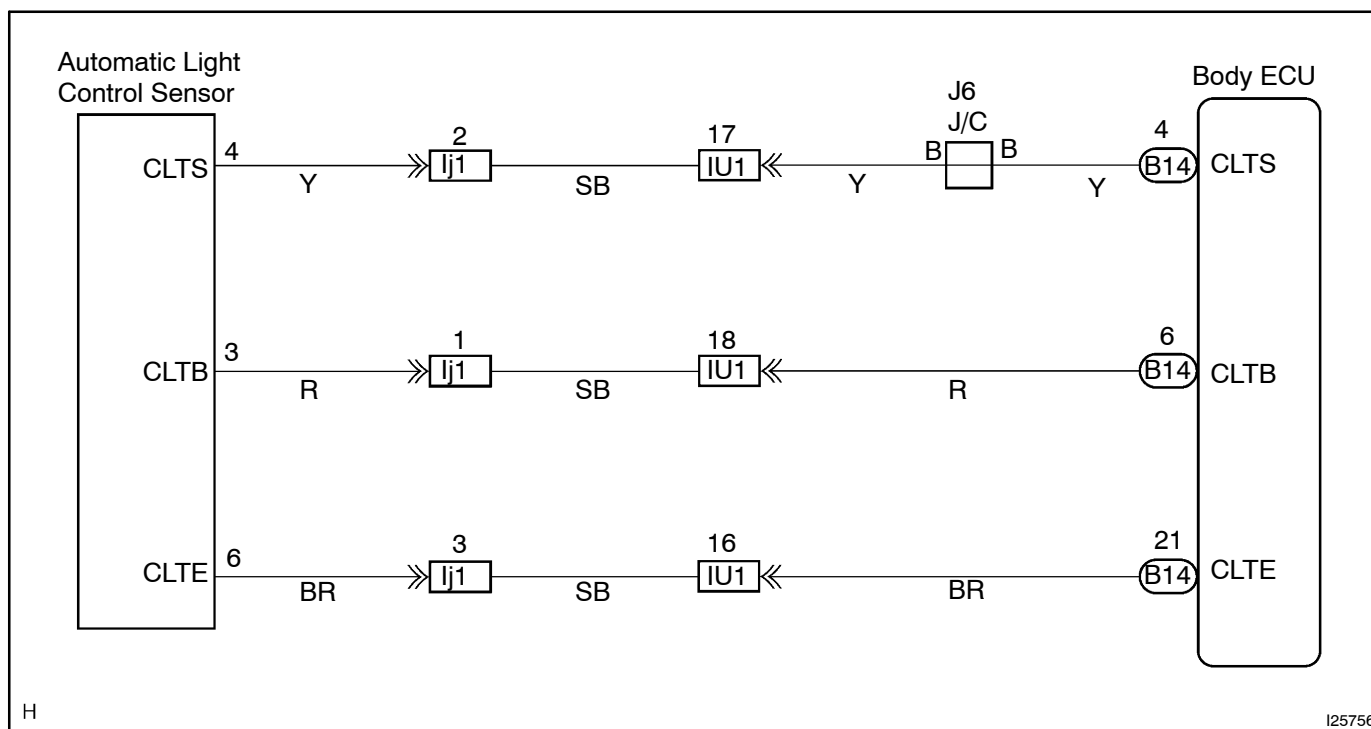
CIRCUIT DESCRIPTION

These DTC notify how switch works as follows:

If DTC is not output when operating switch, it means failure of switch contact. If DTC is output when not operating switch, it means stick of switch. When something wrong is found by this diagnosis, inspect each switch. Then, replace the switch if there is a problem, or check the wire harness if there is no problem.

| DTC No. | DTC Detecting Condition | Trouble Area |
|---------|---|--|
| B1244 | <ul style="list-style-type: none"> Malfunction of light sensor Open or short light sensor circuit | <ul style="list-style-type: none"> Light sensor Body ECU Wire harness |

WIRING DIAGRAM



INSPECTION PROCEDURE

HINT:

In case of using the hand-held tester, start the inspection from step 1 and in case of not using the hand-held tester, start from step 2.

| | |
|----------|---|
| 1 | Check light control sensor using hand-held tester. |
|----------|---|

PREPARATION:

Connect the hand-held tester to DLC 3.

CHECK:

Check that the light control sensor can operate in DATA LIST ([See page DI-981](#)).

OK

Replace Body ECU.

NG

| | |
|----------|---|
| 2 | Check light control sensor (See page BE-23). |
|----------|---|

CHECK:

The value of the illumination rate should change in the following range when the light sensor is put in the light or covered by a hand.

OK:

0.8 ms – 22.0 ms

HINT:

This is the time to be taken for the light sensor to generate one circle of frequency according to the brightness.

NG

Replace the light sensor.

OK

| | |
|----------|---|
| 3 | Check wire harness and connector between light sensor and Body ECU (See page IN-38). |
|----------|---|

NG

Repair or replace wire harness.

OK

Replace Body ECU.