

INSTALLATION

NOTICE:

Never use airbag parts from another vehicle. When replacing parts, replace them with new parts.

HINT:

For step 2 to 5, refer to [page BO-79](#).

1. INSTALL FRONT PASSENGER AIRBAG ASSEMBLY

Install the front passenger airbag assembly to the instrument panel with the 3 nuts.

Torque: 6.0 N·m (61 kgf·cm, 53 in·lbf)

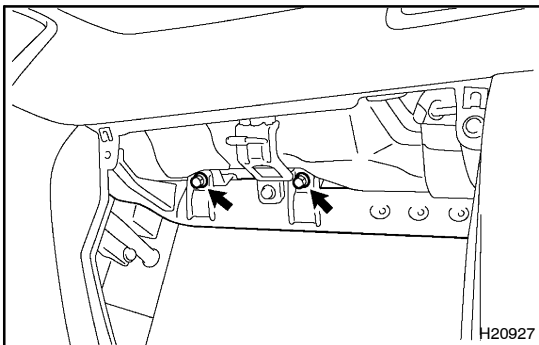
CAUTION:

- Make sure that no foreign objects are trapped between the airbag bag and the module.
- Do not damage the strap when installing the module.

NOTICE:

If the front passenger airbag assembly has been dropped, or there are cracks, dents or other defects in the case or connector, replace the front passenger airbag assembly with a new one.

2. INSTALL NO. 2 SIDE DEFROSTER NOZZLE DUCT
3. INSTALL NO. 5 HEATER TO REGISTER DUCT
4. INSTALL DEFROSTER NOZZLE ASSEMBLY
5. INSTALL CENTER BRACKET



6. INSTALL INSTRUMENT PANEL

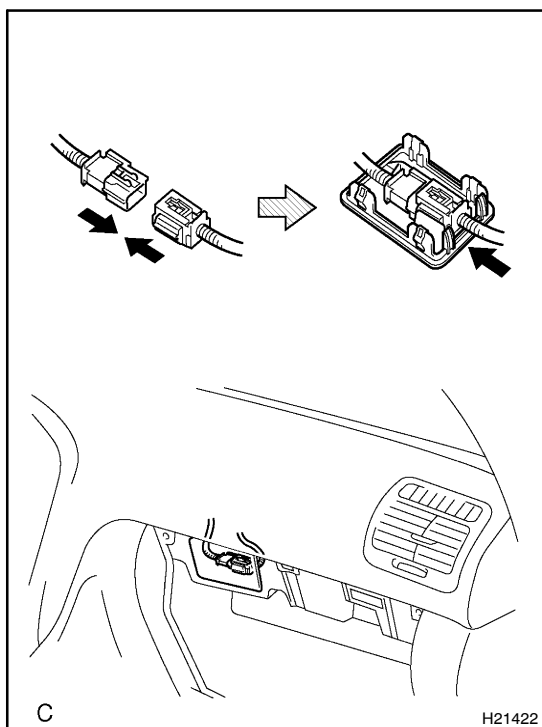
(See [page BO-86](#))

Install the 2 bolts to instrument panel reinforcement.

Torque: 20 N·m (205 kgf·cm, 15 ft·lbf)

NOTICE:

- Make sure the front passenger airbag assembly is installed with the specified torque.
- When installing the instrument panel, take care that the airbag wire harness does not interfere with other parts and is not pinched between other parts.
- When installing the instrument panel box, carefully pull out the airbag wire harness from the glove compartment upper hole.

**7. CONNECT AIRBAG CONNECTOR**

- (a) Connect the airbag connector.
 - (b) Set the connector on the No. 1 under cover.
 - (c) Install the No. 1 under cover to the lower No. 2 finish panel.
 - (d) Install the glove compartment door ([See page BO-86](#)).
- 8. INSPECT SRS WARNING LIGHT ([See page DI-432](#))**